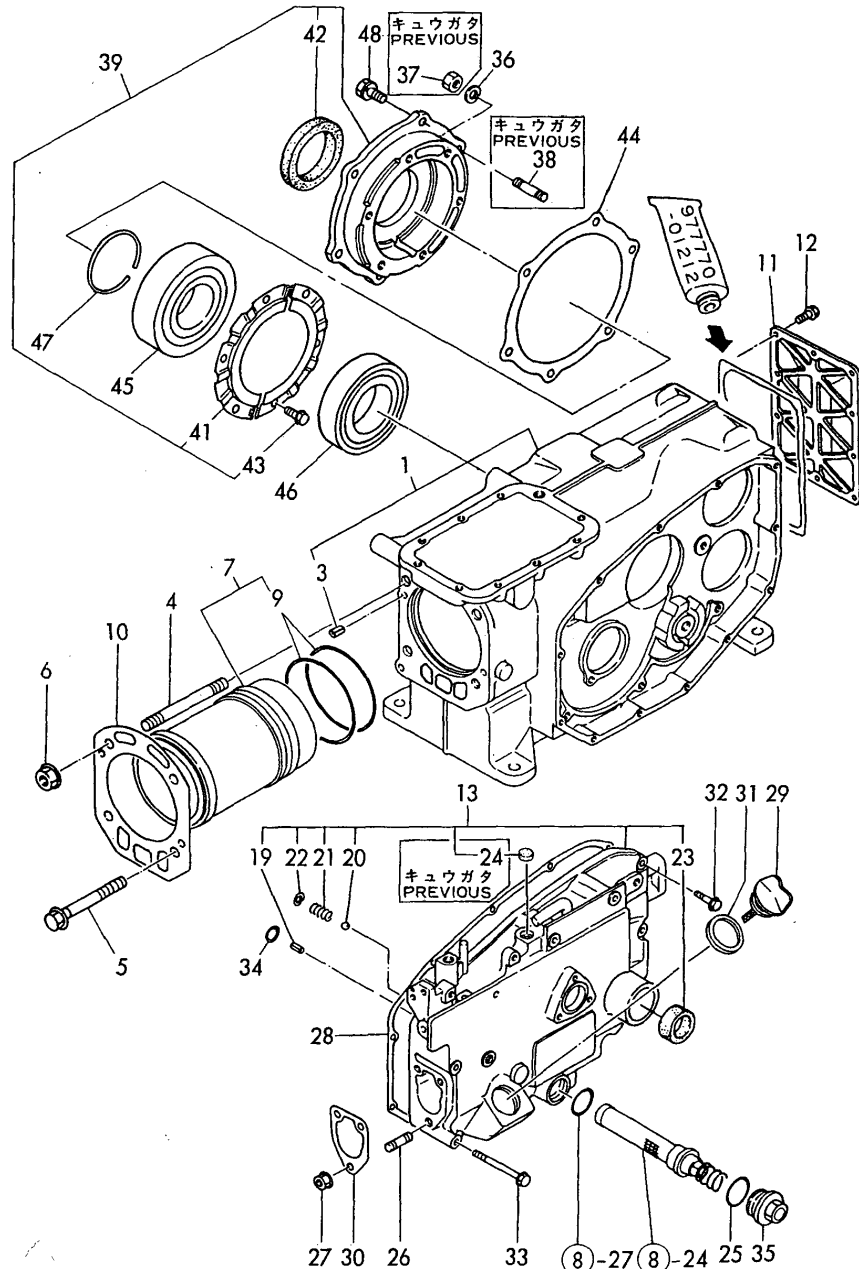


Fig.1. CYLINDER BODY

1. CYLINDER BODY



N061070

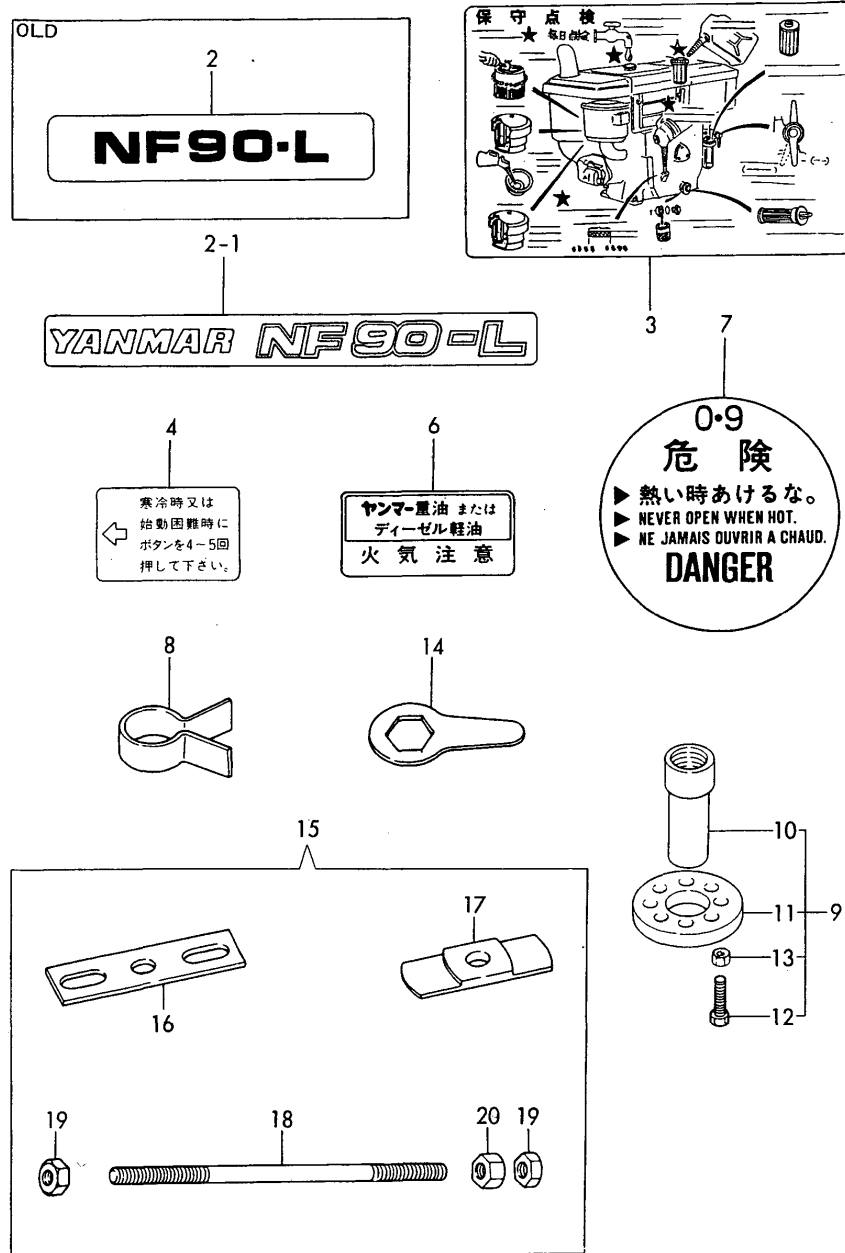
NPC-2165 1. CYLINDER BODY

(A)=NF90-LED (D)=
(B)= (E)=
(C)= (F)=

REF.	LEV.	PARTS NO.	DESCRIPTION	QTY						I	R
				(A)	(B)	(C)	(D)	(E)	(F)		
1	1	705300-01561	BODY ASSY, CYLINDER	1							
3	2	22351-060012	SPRING PIN 6X12	2							
4	1	105230-01200	STUD, CYL. HEAD	2							
5	1	121550-01200	BOLT, CYL. HEAD	2							
6	1	121450-01220	NUT, CYL. HEAD	2							
7	1	705400-01900	LINER W/ O-RING,CYL.	1							
9	2	105300-01300	O-RING, CYL. LINER	2							
10	1	105300-01330	GASKET, CYL. HEAD	1							
10-1	1	105300-01331	GASKET, CYL. HEAD	1							N
(A=*1987.05)											
11	1	105300-01480	COVER, CYL. REAR	1							
12	1	26106-060162	BOLT M 6X 16 PLATED	10							
13	1	705302-01501	HOUSING ASSY, GEARS	1							
13-1	1	705302-01502	HOUSING, ASSY GEAR	1							N
(A=1988.08)											
19	2	22351-060012	SPRING PIN 6X12	1							
20	2	24190-120001	BALL 3/8,STEEL	1							
21	2	105300-34040	SPRING	1							
22	2	22252-000100	CIRCLIP 10	1							
23	2	105140-76500	SEAL TC 25 35 6, OIL	1							
I 24	2	105100-01660	SEAL, BLIND	1							Z
(A=1988.08)											
25	1	24321-000250	O-RING 1A G-25.0	1							
26	1	26216-080222	STUD M 8X 22 PLATED	3							
27	1	26366-080002	NUT M 8	3							
28	1	105300-01410	GASKET, GEAR CASE	1							
29	1	105300-01750	CAP, FILLER	1							
29-1	1	105302-01750	CAP,FILLER	1							N
(A=1988.08)											
30	1	104271-01950	SHIM SET	1							
31	1	101104-01760	GASKET, CAP	1							
32	1	26106-060252	BOLT M 6X 25 PLATED	7							
33	1	26106-060652	BOLT M 6X 65 PLATED	5							
34	1	24311-000060	O-RING 1A P-6.0	1							
35	1	105300-01690	PLUG, DRAIN	1							
36	1	22217-080000	SPRING WASHER 8	1							
I 37	1	26716-080002	NUT M 8	1							Z
(A=EXXXXX)											
I 38	1	26216-080222	STUD M 8X 22 PLATED	1							Z
(A=EXXXXX)											
39	1	705300-02500	HOUSING ASSY,BEARING	1							
41	2	105230-02320	RETAINER	2							
42	2	123325-02500	SEAL, OIL	1							
43	2	26116-060102	BOLT M 6X 10 PLATED	6							
44	1	105300-02020	GASKET	1							
45	1	105400-02300	BALL BEARING	1							
46	1	105400-02310	ROLLER BEARING	1							
47	1	22242-000450	CIRCLIP 45	1							
48	1	26013-080202	BOLT W/WASHER M8X20	5							
I 48-1	1	26013-080202	BOLT W/WASHER M8X20	6							K
(A=EXXXXX)											

Fig.2. LABELS & TOOLS

2. LABELS & TOOLS



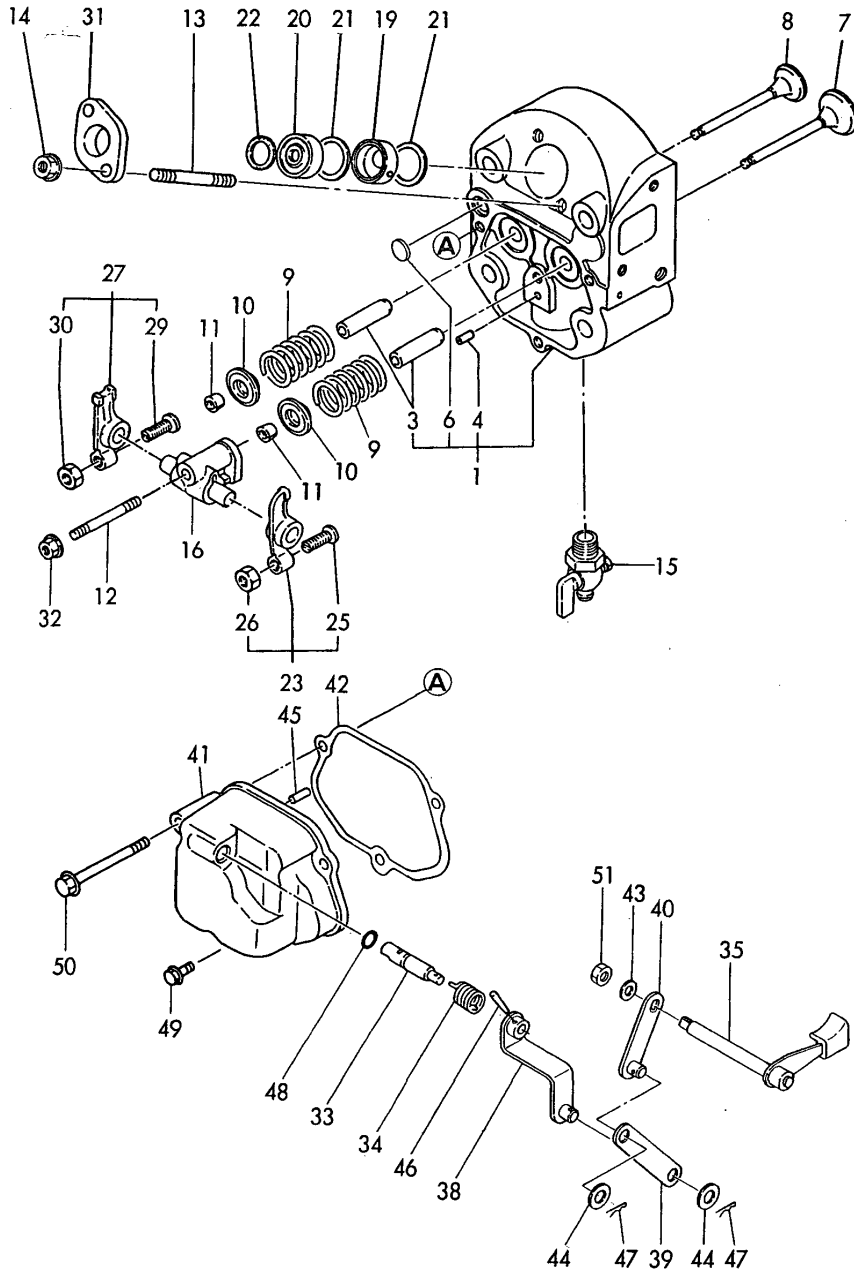
NPC-2165 2. LABELS & TOOLS

(A)=NF90-LED (D)=
(B)= (E)=
(C)= (F)=

REF.	LEV.	PARTS NO.	DESCRIPTION	QTY						I	R
				(A)	(B)	(C)	(D)	(E)	(F)		
2	1	105472-07060	LABEL	2							
2-1	1	105472-07061	LABEL	2							N
(A=EXXXXXX)											
3	1	105402-07100	LABEL	1							
4	1	105192-07130	LABEL	1							
6	1	104204-07280	LABEL	1							
7	1	105300-07400	LABEL, RADIATOR	1							
8	1	101400-92140	TOOL, PISTON&RING	1							
9	1	704200-92700	TOOL, FLYWHEEL REMOV	1							
10	2	104200-92110	RETAINER (A)	1							
11	2	104200-92120	RETAINER (B)	1							
12	2	104200-92130	BOLT	2							
13	2	26716-120002	NUT M12	2							
14	1	104200-92100	WRENCH, END NUT	1							
15	1	701400-92210	TOOL, CYL LINER	1							
16	2	172200-92020	PLATE, UPPER	1							
17	2	101400-92010	RETAINER	1							
18	2	103338-92030	BOLT	1							
19	2	26716-160002	NUT M16	2							
20	2	26757-160002	LOCK NUT M16 PLATED	1							

Fig.3. CYLINDER HEAD & BONNET

3. CYLINDER HEAD & BONNET



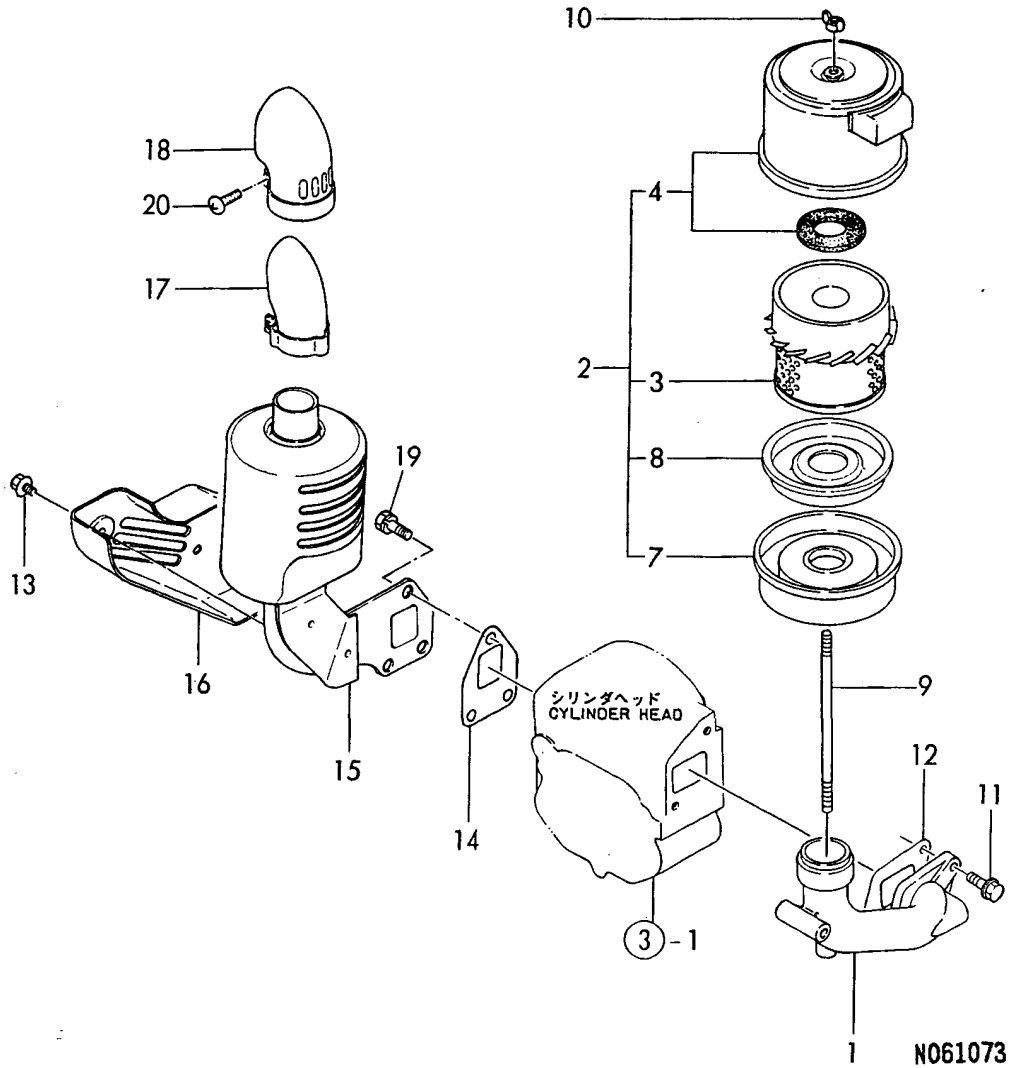
3. CYLINDER HEAD & BONNET

(A)=NF90-LED (D)=
 (B)= (E)=
 (C)= (F)=

REF.	LEV.	PARTS NO.	DESCRIPTION	QTY						I	R
				(A)	(B)	(C)	(D)	(E)	(F)		
1	1	705370-11701	HEAD ASSY, CYLINDER	1							
3	2	105300-11160	GUIDE, VALVE	2							
3-1	2	105300-11161	GUIDE, VALVE	2							N
(A=**1987.11)											
4	2	105300-11330	PIN	1							
6	2	27231-150000	PLUG 15	1							
7	1	105300-11100	VALVE, SUCTION	1							
8	1	105300-11110	VALVE, EXHAUST	1							
8-1	1	105300-11111	VALVE, EXHAUST	1							N
(A=**1987.11)											
9	1	101158-11120	SPRING, VALVE	2							
I 9-1	1	105400-11121	SPRING, VALVE	2							N
(A=198801)											
10	1	101158-11180	RETAINER, SPRING	2							
I 11	1	101158-11190	COTTER	4							
12	1	26216-080502	STUD M 8X 50 PLATED	1							
I 12-1	1	26216-080452	STUD M 8X 45 PLATED	1							S
(A=EXXXXX)											
13	1	26216-080752	STUD M 8X 75 PLATED	2							
14	1	26366-080002	NUT M 8	2							
15	1	105010-11920	COCK	1							
16	1	105300-11290	SUPPORT, ROCKER ARM	1							
19	1	105470-11400	CHAMBER, FRONT	1							
20	1	105470-11410	CHAMBER, REAR	1							
21	1	124220-11450	GASKET, CHAMBER	2							
22	1	105025-11490	INSULATOR, HEAT	1							
23	1	105300-11650	ARM ASSY,ROCKER(SUC.)	1							
25	2	101158-11230	SCREW, VALVE	1							
26	2	26756-080002	LOCK NUT M 8 PLATED	1							
27	1	105300-11660	ARM ASSY,ROCKER(EXH.)	1							
29	2	101158-11230	SCREW, VALVE	1							
30	2	26756-080002	LOCK NUT M 8 PLATED	1							
31	1	101147-11900	FLANGE	1							
32	1	26366-080002	NUT M 8	1							
33	1	104200-03600	SHAFT, DECOMPRESSION	1							
34	1	104200-03641	SPRING,DECOMPRESSION	1							
35	1	105472-03700	LEVER(A) ASSY,DECOMP	1							
38	1	105472-03760	LEVER B	1							
39	1	105472-03770	LINK	1							
40	1	105472-03780	LEVER(C), DECOMP.	1							
41	1	105300-11300	BONNET	1							
42	1	105300-11310	GASKET, BONNET	1							
43	1	22117-060000	WASHER 6	1							
44	1	22117-080000	WASHER 8	2							
45	1	22312-030180	PARALLEL PIN 3X18	1							
46	1	22322-030180	TAPER PIN 3X18	1							
47	1	22372-080000	SNAP PIN (JASO 8)	2							
48	1	24311-000070	O-RING 1A P-7.0	1							
49	1	26106-060202	BOLT M 6X 20 PLATED	2							
50	1	26106-060602	BOLT M 6X 60 PLATED	1							
51	1	26716-060002	NUT M 6	1							

Fig.4. AIR CLEANER & MUFFLER

4. AIR CLEANER & MUFFLER



NPC-2165 4. AIR CLEANER & MUFFLER

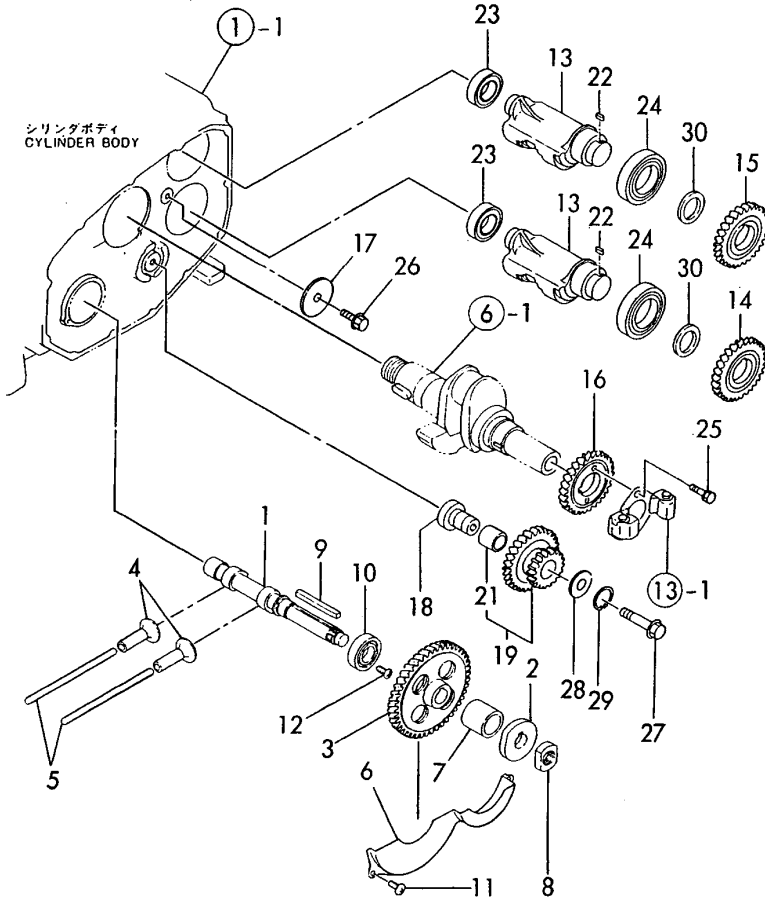
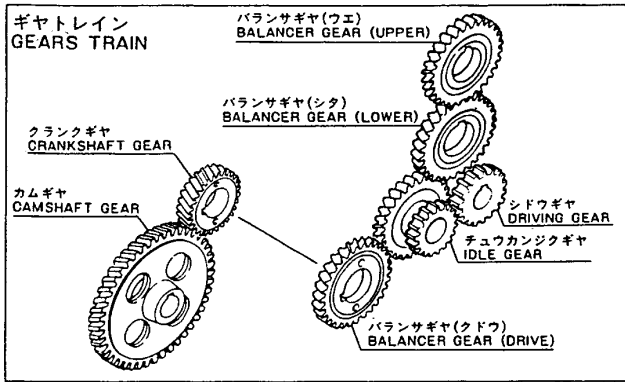
(A)=NF90-LED (D)=
 (B)= (E)=
 (C)= (F)=

REF.	LEV.	PARTS NO.	DESCRIPTION	QTY						I	R
				(A)	(B)	(C)	(D)	(E)	(F)		
1	1	105472-12020	PIPE, AIR INTAKE	1							
2	1	105300-12510	CLEANER ASSY. AIR	1							
I 2-1	1	105300-12511	CLEANER, AIR	1							R
(A=1989.04)											
3	2	105370-12570	ELMENT, AIR CLEANER	1							
4	2	105370-12530	CASE ASSY, CLEANER	1							
I 4-1	2	105370-12531	COVER ASSY	1							N
(A=1989.04)											
7	2	105370-12540	PAN, DUST	1							
8	2	105370-12670	BAFFLE	1							
9	1	105300-12550	BOLT, AIR CLEANER	1							
10	1	101147-12550	WING NUT	1							
11	1	26106-080202	BOLT M 8X 20 PLATED	2							
12	1	105190-12050	GASKET, AIR INTAKE	1							
13	1	160260-01580	BOLT M 6X 6	2							
14	1	105300-13200	GASKET, SILENCER	1							
15	1	105300-13521	SILENCER	1							
I 15-1	1	105300-13522	SILENCER	1							N
(A=1991.05)											
16	1	105300-13550	COVER, ELBOW	1							
17	1	105370-13570	EXTESION, EXH.	1							
18	1	105212-13590	COVER	1							
19	1	26013-080209	BOLT M 8X 20	3							
I 19-1	1	26013-080189	BOLT M8X18 W/SP.WSHR	3							N
(A=1991.05)											
20	1	26554-060162	SCREW M 6X 16	1							

Fig.5. CAM SHAFT & BALANCER

(A)=NF90-LED (D)=
 (B)= (E)=
 (C)= (F)=

5. CAM SHAFT & BALANCER

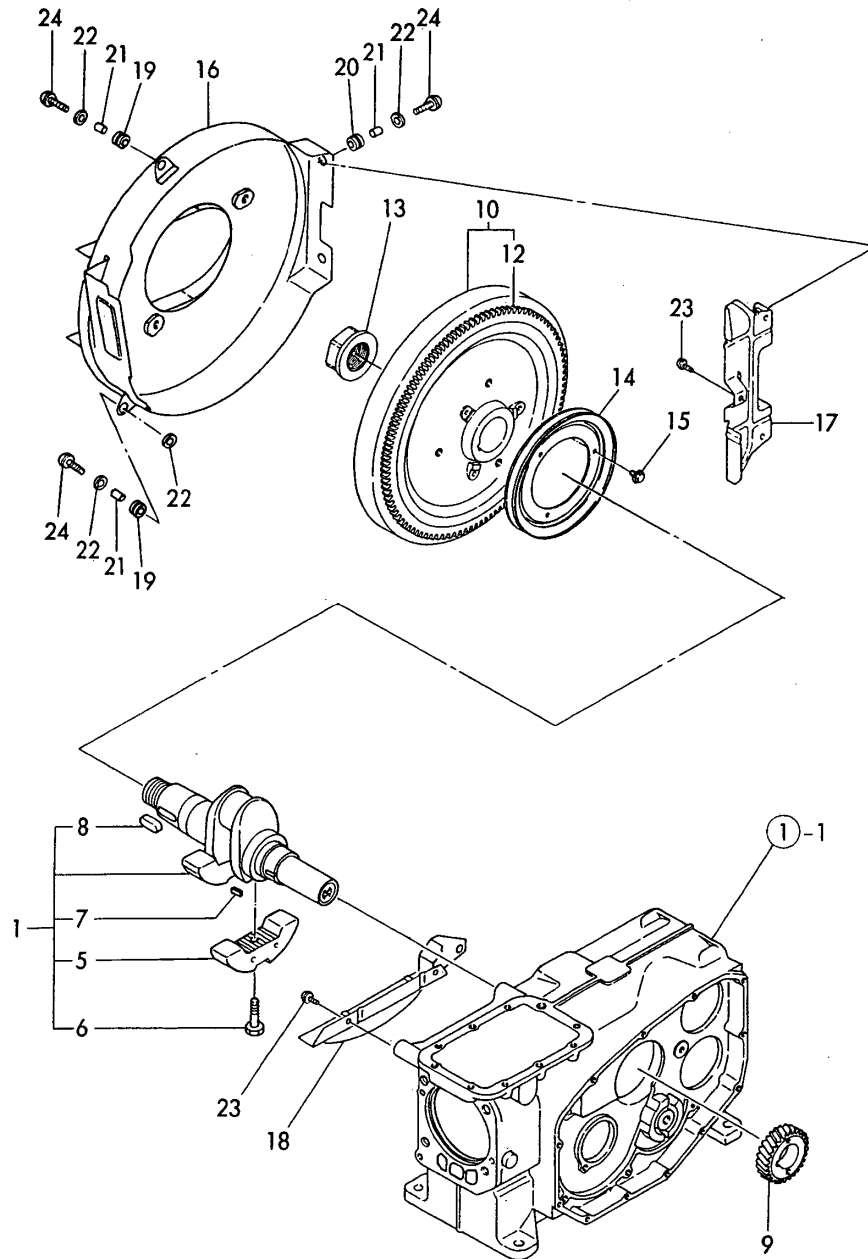


REF.	LEV.	PARTS NO.	DESCRIPTION	QTY						I	R
				(A)	(B)	(C)	(D)	(E)	(F)		
1	1	105300-14010	CAMSHAFT	1							
I 1-1	1	105400-14010	CAMSHAFT	1							R
(A=1989.04)											
2	1	105370-14090	CAM,FUEL	1							
3	1	105300-14100	GEAR, CAM SHAFT	1							
4	1	105300-14200	TAPPET	2							
5	1	105300-14400	PUSH-ROD	2							
6	1	105300-14600	COVER, GEAR	1							
7	1	105302-14700	SPACER	1							
8	1	104300-76460	NUT	1							
9	1	22512-070600	KEY 7X 60	1							
10	1	24101-060064	BALL BEARING	1							
11	1	26022-060122	SCREW M 6X 12	3							
12	1	26587-080122	SCREW M 8X 12	1							
13	1	105300-28251	SHAFT, BALANCER	2							
14	1	105300-28300	GEAR, BALANCER	1							
15	1	105300-28310	GEAR, BALANCER	1							
16	1	105300-28410	GEAR, BALANCER	1							
17	1	105300-28450	RETAINER	1							
18	1	105302-28701	IDLE SHAFT	1							
19	1	105302-28710	GEAR W/BUSH	1							
21	2	105302-28720	BUSH	1							
22	1	105215-76490	KEY	2							
23	1	24101-060054	BALL BEARING	2							
24	1	24101-060084	BALL BEARING	2							
25	1	26013-060222	BOLT M 6X 22	2							
26	1	26106-080122	BOLT M 8X 12 PLATED	1							
26-1	1	26106-080162	BOLT M 8X 16 PLATED	1							N
(A=*1986.09)											
27	1	26106-100652	BOLT M10X 65 PLATED	1							
28	1	105362-28750	SPACER	1							
29	1	22242-000210	CIRCLIP 21	1							
30	1	105300-28380	COLLAR, SHAFT	2							

(A)=NF90-LED (D)=
 (B)= (E)=
 (C)= (F)=

Fig.6. CRANKSHAFT & FLYWHEEL

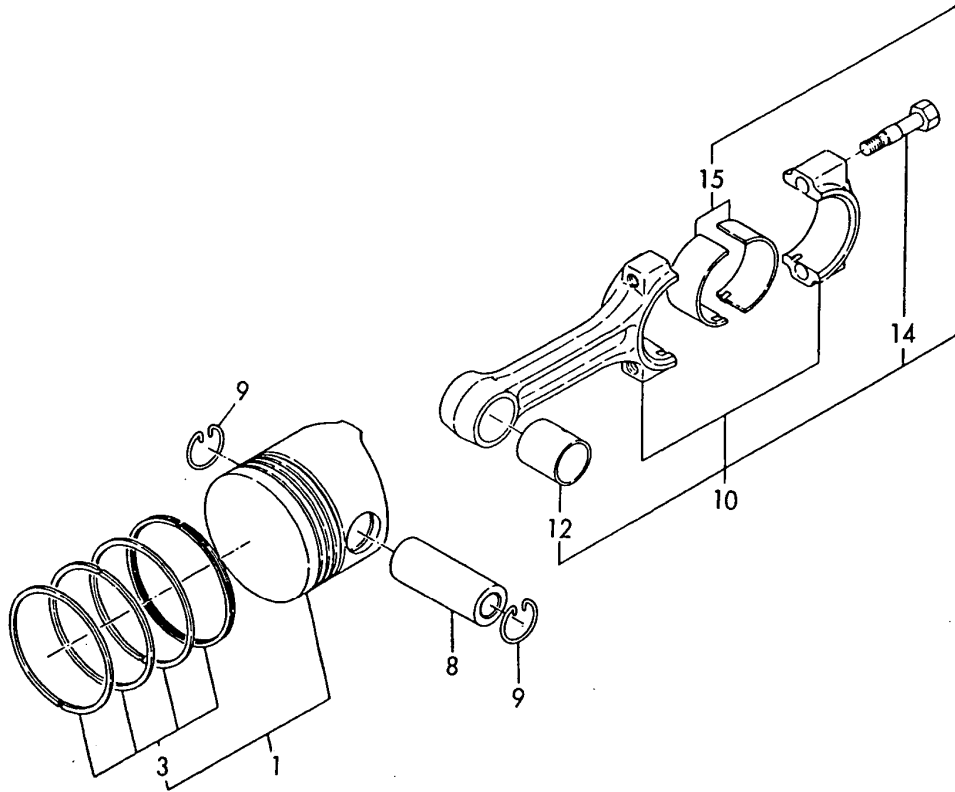
6. CRANKSHAFT & FLYWHEEL



REF.	LEV.	PARTS NO.	DESCRIPTION	QTY						I	R
				(A)	(B)	(C)	(D)	(E)	(F)		
1	1	705300-21700	CRANKSHAFT ASSY.	1							
5	2	105300-21100	WEIGHT, BALANCER	2							
6	2	106100-21130	BOLT, BALANCE WEIGHT	2							
7	2	22512-050120	KEY 5X 12	1							
8	2	22512-100260	KEY 10X 26	1							
9	1	105300-21200	GEAR, CRANKSHAFT	1							
10	1	105300-21590	FLYWHEEL W/RING GEAR	1							
10-1	1	105300-21591	FLYWHEEL W/RING GEAR	1							N
(A=1987.02)											
12	2	105362-21600	GEAR, RING	1							
13	1	104200-21530	END NUT	1							
14	1	105300-21600	V-PULLEY	1							
15	1	26106-060122	BOLT M 6X 12 PLATED	3							
16	1	105472-21350	COVER, FLYWHEEL	1							
17	1	105300-21360	COVER(A)	1							
18	1	105302-21320	COVER	1							
19	1	105300-21380	PAD	2							
19-1	1	105300-21381	PAD	2							N
(A=*1987.10)											
20	1	105300-44450	CUSHION, RUBBER	2							
20-1	1	105300-44451	CUSHION, RUBBER	2							N
(A=*1987.10)											
21	1	105300-44460	SPACER	4							
22	1	160120-76940	WASHER	5							
23	1	26033-060142	SCREW M 6X 14	5							
23-1	1	26106-060122	BOLT M 6X 12 PLATED	5							R
(A=1987.01)											
I	23-2	1	26106-060122	BOLT M 6X 12 PLATED	2						K
(A=EXXXXX)											
24	1	26033-060202	SCREW M 6X 20	4							
24-1	1	26106-060202	BOLT M 6X 20 PLATED	4							R
(A=1987.01)											

Fig.7. PISTON & CONNECTING ROD

7. PISTON & CONNECTING ROD



NPC-2165 7. PISTON & CONNECTING ROD

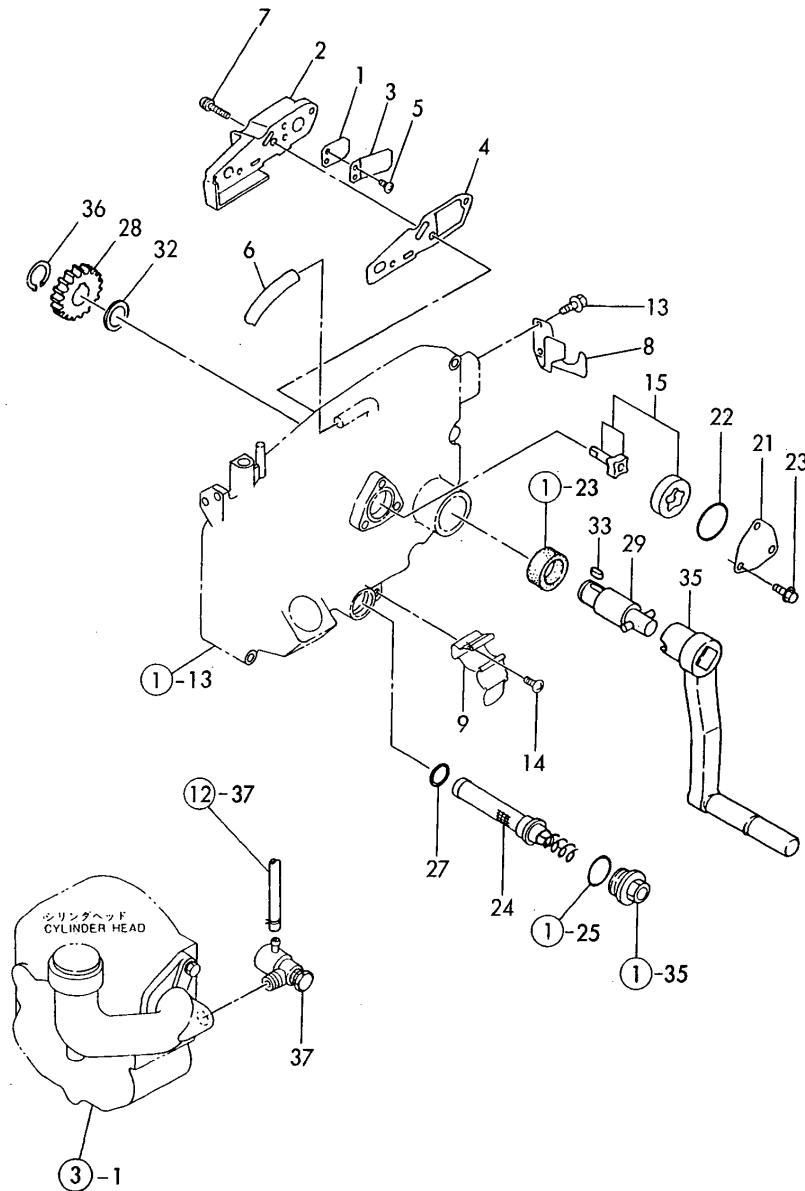
(A)=NF90-LED (D)=
 (B)= (E)=
 (C)= (F)=

REF.	LEV.	PARTS NO.	DESCRIPTION	QTY						I	R
				(A)	(B)	(C)	(D)	(E)	(F)		
1	1	105470-22090	PISTON W/RINGS	1							
3	2	704500-22502	RING SET	1							
I 3-1	2	704500-22503	RING SET	1							R
		(A=1989.04)									
I 5-1	3	105400-22120	RING, PISTON	1							R
		(A=1989.04)									
8	1	105300-22300	PIN, PISTON	1							
9	1	105300-22400	CIRCLIP	2							
10	1	705300-23100	ROD ASSY, CONNECTING	1							
12	2	105300-23910	BUSH, PISTON PIN	1							
14	2	105300-23200	BOLT, ROD	2							
15	2	705300-23600	BEARING, CRANK PIN	1							

Fig.8. LUB.OIL SYSTEM & STARTING DEVICE,

(A)=NF90-LED (D)=
 (B)= (E)=
 (C)= (F)=

8. LUB. OIL SYSTEM & STARTING DEVICE

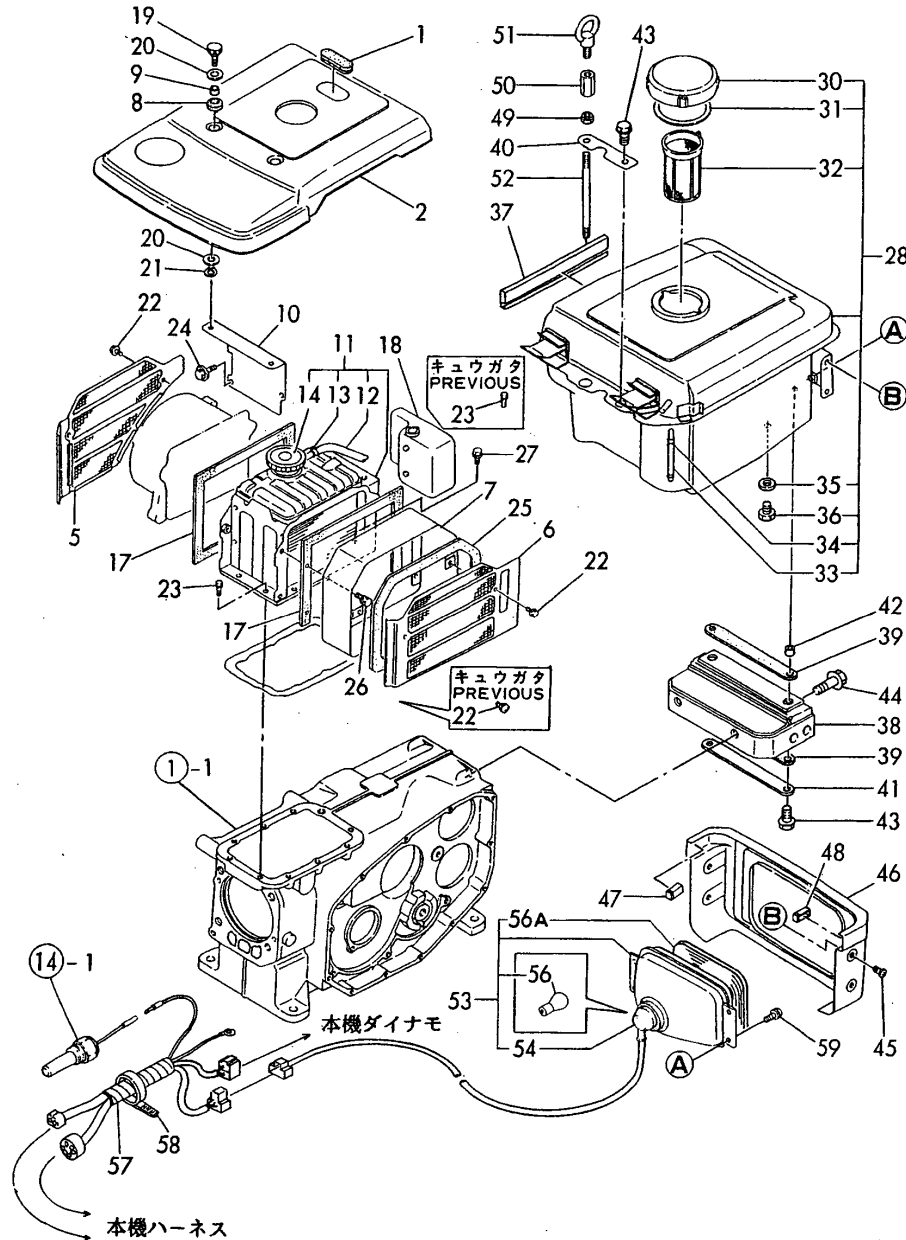


REF.	LEV.	PARTS NO.	DESCRIPTION	QTY						I	R
				(A)	(B)	(C)	(D)	(E)	(F)		
1	1	101158-03061	VALVE, CHECK	1							
2	1	105300-03082	COVER, BREATHER	1							
3	1	101158-03111	RETAINER	1							
4	1	105300-03130	GASKET	1							
5	1	105362-78960	SCREW	2							
6	1	23064-090400	PIPE	1							
7	1	26023-060252	SCREW M 6X 25	3							
8	1	105302-08101	CLAMP, HANDLE	1							
9	1	105300-08510	CLAMP ASSY	1							
13	1	26106-060162	BOLT M 6X 16 PLATED	2							
14	1	26557-060082	SCREW M 6X 8	1							
15	1	705300-32500	ROTOR ASSY, LUB. OIL	1							
21	1	103338-32070	COVER, LUB OIL PUMP	1							
22	1	103338-32570	O-RING	1							
23	1	26106-060122	BOLT M 6X 12 PLATED	3							
24	1	105300-35052	STRAINER, LUB. OIL	1							
27	1	24341-000200	O-RING 1A S-20.0	1							
28	1	105302-76330	GEAR, STARTING	1							
29	1	705302-76900	SHAFT W/PIN	1							
32	1	105300-76470	COLLER, STARTING	1							
33	1	105300-76490	KEY 7X10	1							
35	1	105302-76790	START HANDLE	1							
36	1	22242-000200	CIRCLIP 20	1							
37	1	105192-76900	BOOSTER, STARTING	1							
37-1	1	105192-76901	BOOSTER, STARTING	1							N

(A=*1988.05)

Fig.9. RADIATOR & FUEL OIL TANK

9. RADIATOR & FUEL OIL TANK



N061078

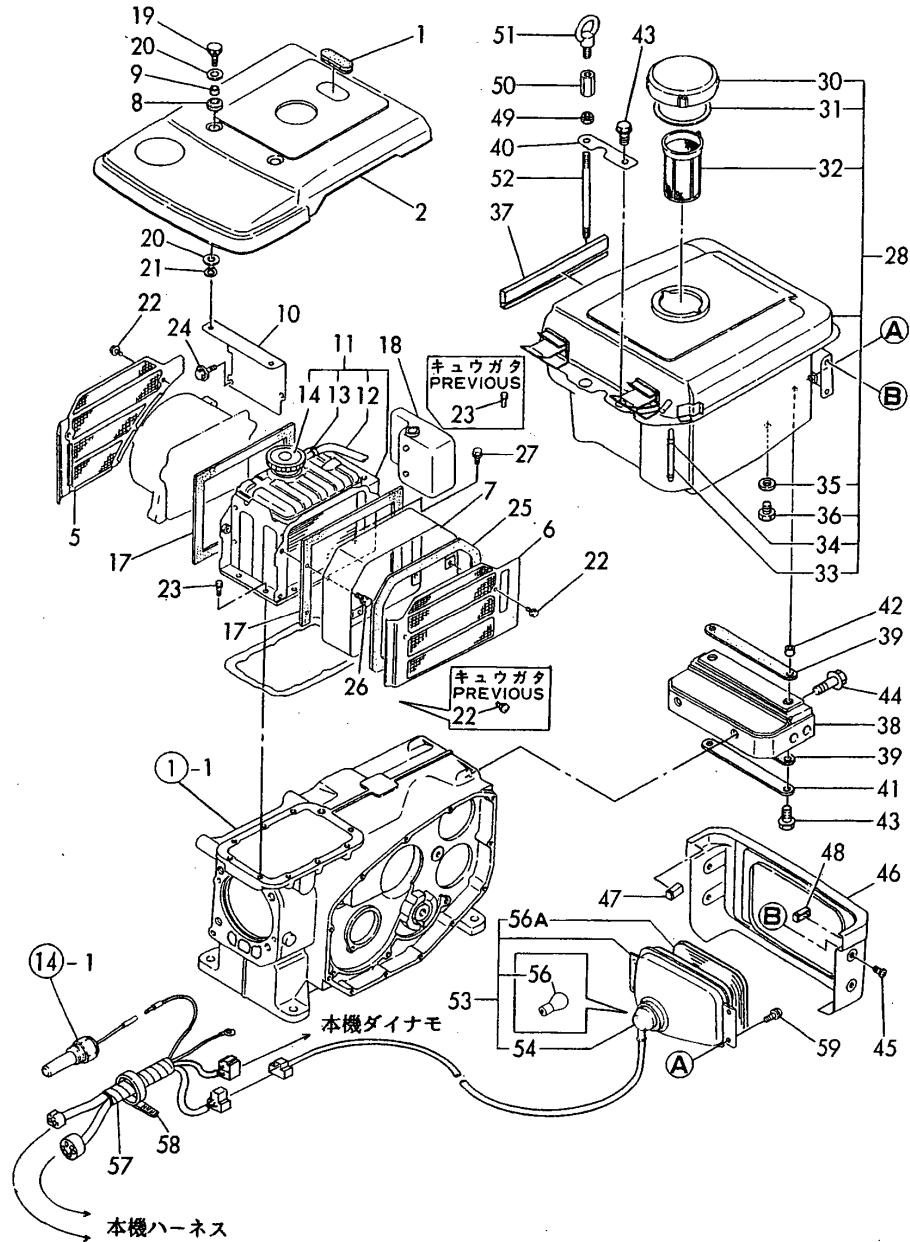
(A)=NF90-LED (D)=
(B)= (E)=
(C)= (F)=

REF.	LEV.	PARTS NO.	DESCRIPTION	QTY						I	R
				(A)	(B)	(C)	(D)	(E)	(F)		
1	1	105300-44220	BLIND,RADIATOR COVER	1							
2	1	105300-44251-2	COVER, RADIATOR	1							
5	1	105300-44330	SCREEN	1							
6	1	105300-44340	SCREEN	1							
7	1	105300-44360	DUCT, SCREEN	1							
8	1	105300-44450	CUSHION, RUBBER	2							
8-1	1	105300-44451	CUSHION, RUBBER	2							N
		(A=*1987.10)									
9	1	105300-44460	SPACER	2							
10	1	105300-44490	STAY	1							
11	1	105300-44510	RADIATOR ASSY.	1							
11-1	1	105300-44511	RADIATOR	1							N
		(A=1987.10)									
12	2	105300-44570	PIPE 7X170	1							
13	2	121250-44590	CLAMP	1							
14	2	105300-44600	CAP, RADIATOR	1							
17	1	104607-44540	PAD	2							
18	1	105300-44630	SUB RESERVOIR	1							
19	1	105300-44760	KNOB	2							
20	1	160120-76940	WASHER	4							
21	1	22272-000050	CIRCLIP E- 5	2							
22	1	26033-060142	SCREW M 6X 14	7							
22-1	1	26106-060122	BOLT M 6X 12 PLATED	3							N
		(A=*1986.11)									
23	1	26013-060142	BOLT M 6X 14	9							
23-1	1	26013-060142	BOLT M 6X 14	8							K
		(A=*1987.10)									
24	1	26106-060122	BOLT M 6X 12 PLATED	2							
25	1	106100-44560	PAD	1							
26	1	26014-060149	BOLT M 6X 14	4							W
		(A=*1986.11)									
I 26-1	1	26013-060129	BOLT M 6X 12	4							N
		(A=1990.11)									
27	1	26013-060162	BOLT M 6X 16	1							W
		(A=*1987.10)									
28	1	705378-55700	TANK ASSY, FUEL	1							
28-1	1	705378-55701	TANK ASSY, FUEL	1							N
		(A=*1987.10)									
30	2	105302-55040	COVER	1							
31	2	101504-55051	GASKET, TANK CAP	1							
32	2	105372-55100	STRAINER, FUEL TANK	1							
33	2	104300-55160	PIPE, GAUGE	1							
34	2	103854-55220	CLAMP	2							
35	2	23414-080000	GASKET 8, ROUND	1							
36	2	23887-080002	PLUG 8	1							
36-1	2	105300-55080	PLUG, DRAIN	1							N
		(A=*1986.09)									
37	1	105300-55230	LABEL	2							
37-1	1	105372-55230	SIDE PLATE	2							N
		(A=EXXXXXX)									
38	1	105302-55240	BRACKET, FUEL TANK	1							
39	1	105400-55520	GROMMET	2							
40	1	105198-55520	RETAINER	1							
41	1	105500-55530	RETAINER	1							

++ CONTINUE ++

Fig.9. RADIATOR & FUEL OIL TANK

9. RADIATOR & FUEL OIL TANK



N061078

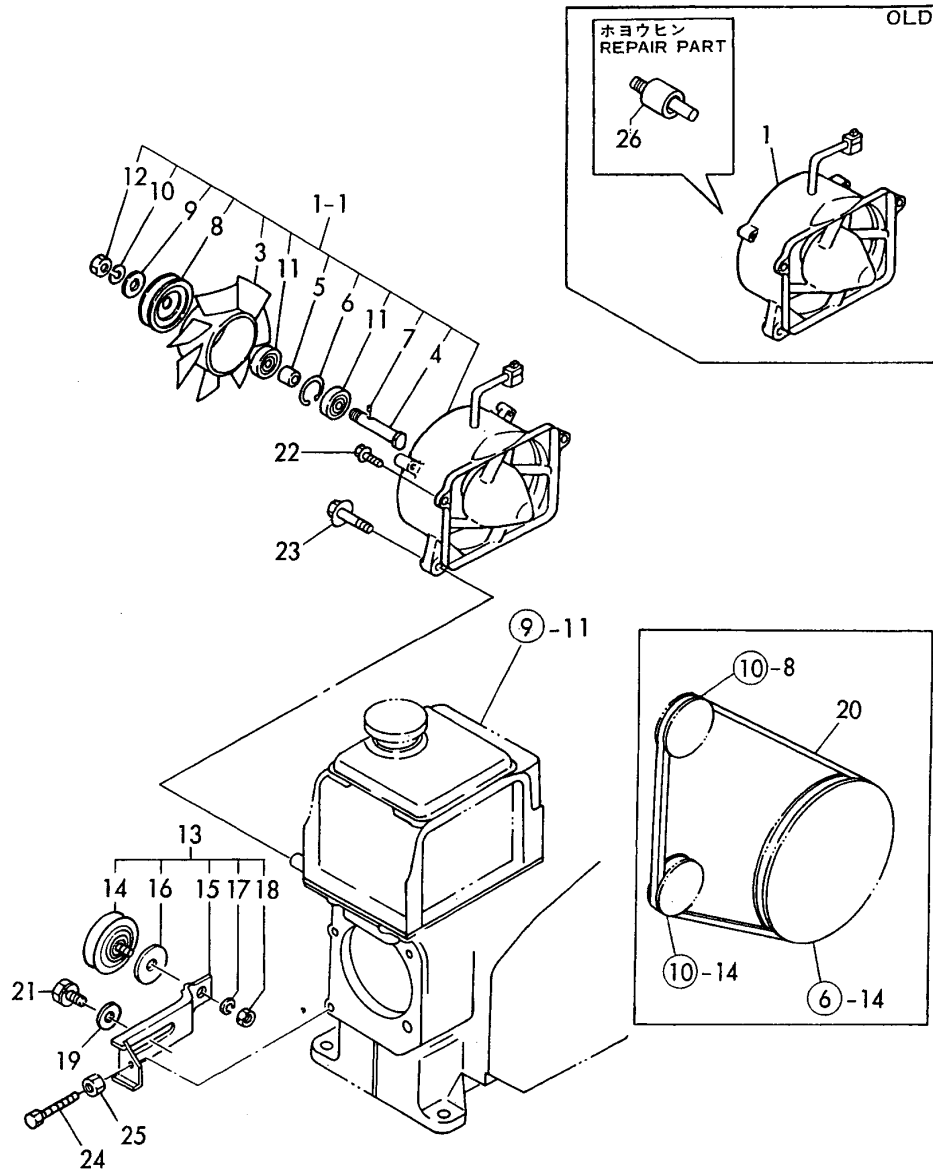
NPC-2165 9. RADIATOR & FUEL OIL TANK

(A)=NF90-LED (D)=
(B)= (E)=
(C)= (F)=

REF.	LEV.	PARTS NO.	DESCRIPTION	QTY						I	R
				(A)	(B)	(C)	(D)	(E)	(F)		
42	1	105100-55540	COLLAR, FUEL TANK	2							
43	1	26106-080222	BOLT M 8X 22 PLATED	3							
44	1	26106-100162	BOLT M10X 16 PLATED	2							
45	1	26033-060142	SCREW M 6X 14	4							
45-1	1	26106-060122	BOLT M 6X 12 PLATED	4							N
(A=1986.01)											
46	1	105302-55810	COVER	1							
47	1	105300-55840	PIECE, TANK COVER	1							
48	1	105300-55850	PIECE, TANK COVER	1							
49	1	104107-07900	NUT (M10)	1							
50	1	105300-07910	NUT, LIFTER	1							
51	1	105300-07940	STUD, LIFTER	1							
52	1	26617-100002	EYE BOLT M10	1							
53	1	105372-78020	LAMP ASSY	1							
54	2	105372-78040	SOCKET W/WIRE	1							
56	2	105372-78250	BULB	1							
I 56A	3	105372-78260	LENS, LAMP	1							W
(A=1989.12)											
57	1	105192-78540	WIRE HARNESS	1							
58	1	160370-78950	CLAMP	1							
59	1	26033-060122	SCREW M 6X 12	4							

Fig.10. FAN DRIVE

10. FAN DRIVE



Remarks
(1)REPAIR PART.

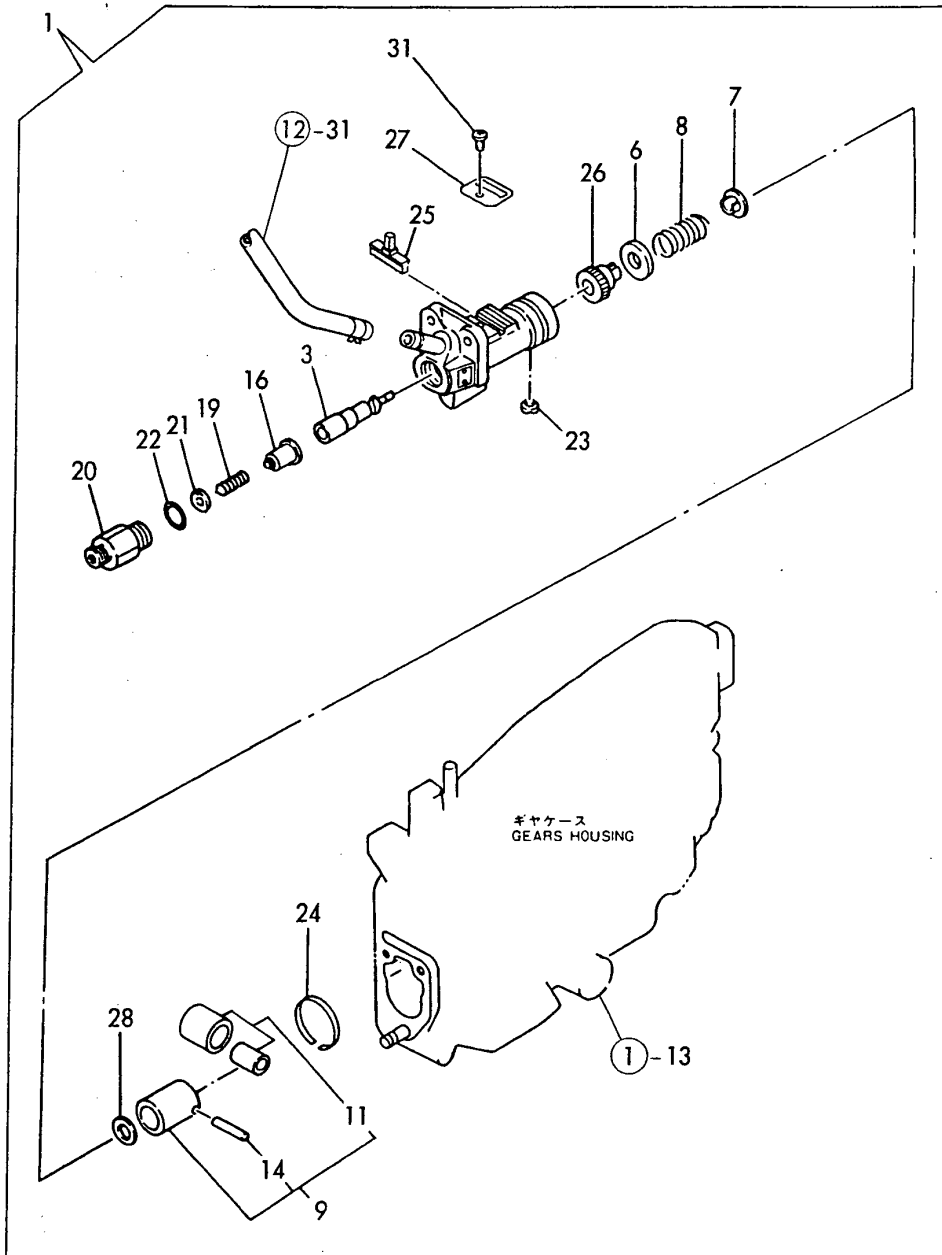
(A)=NF90-LED (D)=
(B)= (E)=
(C)= (F)=

REF.	LEV.	PARTS NO.	DESCRIPTION	QTY						I	R
				(A)	(B)	(C)	(D)	(E)	(F)		
1	1	105300-44210	CASE ASSY, FAN	1							
1-1	1	105300-44211 (A=1986.11)	CASE ASSY, FAN	1							N
3	2	105300-44850 (A=*1987.01)	FAN	1							W
4	2	105340-44710 (A=*1987.01)	SHAFT, FAN	1							W
5	2	106383-44720 (A=*1987.01)	SPACER	1							W
6	2	106383-44740 (A=*1987.01)	CIRCLIP	1							W
7	2	105340-44750 (A=*1987.01)	PIN	1							W
8	2	105100-44770 (A=*1987.01)	PULLEY, FAN	2							W
9	2	105100-44780 (A=*1987.01)	WASHER	1							W
10	2	22217-120000 (A=*1987.01)	WASHER 12,SPRING	1							W
11	2	24107-062013 (A=*1987.01)	BALL BEARING	2							W
12	2	26777-120002 (A=*1987.01)	LOCK NUT M12	1							W
13	1	105300-44810	PULLEY ASSY, TENSION	1							
14	2	106100-44650	PULLEY, TENSION	1							
15	2	105300-44940	LEVER	1							
16	2	106100-44960	CAP	1							
17	2	22217-080000	SPRING WASHER 8	1							
18	2	26716-080002	NUT M 8	1							
19	1	22137-080000	WASHER 8, POLISHED	1							
20	1	25117-003801	V-BELT M1380	1							
21	1	26013-080162	BOLT W/WASHER M8X16	1							
22	1	26106-060202	BOLT M 6X 20 PLATED	2							
22-1	1	26106-060252 (A=*1986.12)	BOLT M 6X 25 PLATED	2							N
23	1	26106-080302	BOLT M 8X 30 PLATED	2							
24	1	26116-060504	BOLT M 6X 50 PLATED	1							
25	1	26756-060002	LOCK NUT M 6 PLATED	1							
26	1	105300-44650	SHAFT BEARING, FAN	1							1

Fig.11. FUEL OIL INJECTION PUMP

(A)=NF90-LED (D)=
 (B)= (E)=
 (C)= (F)=

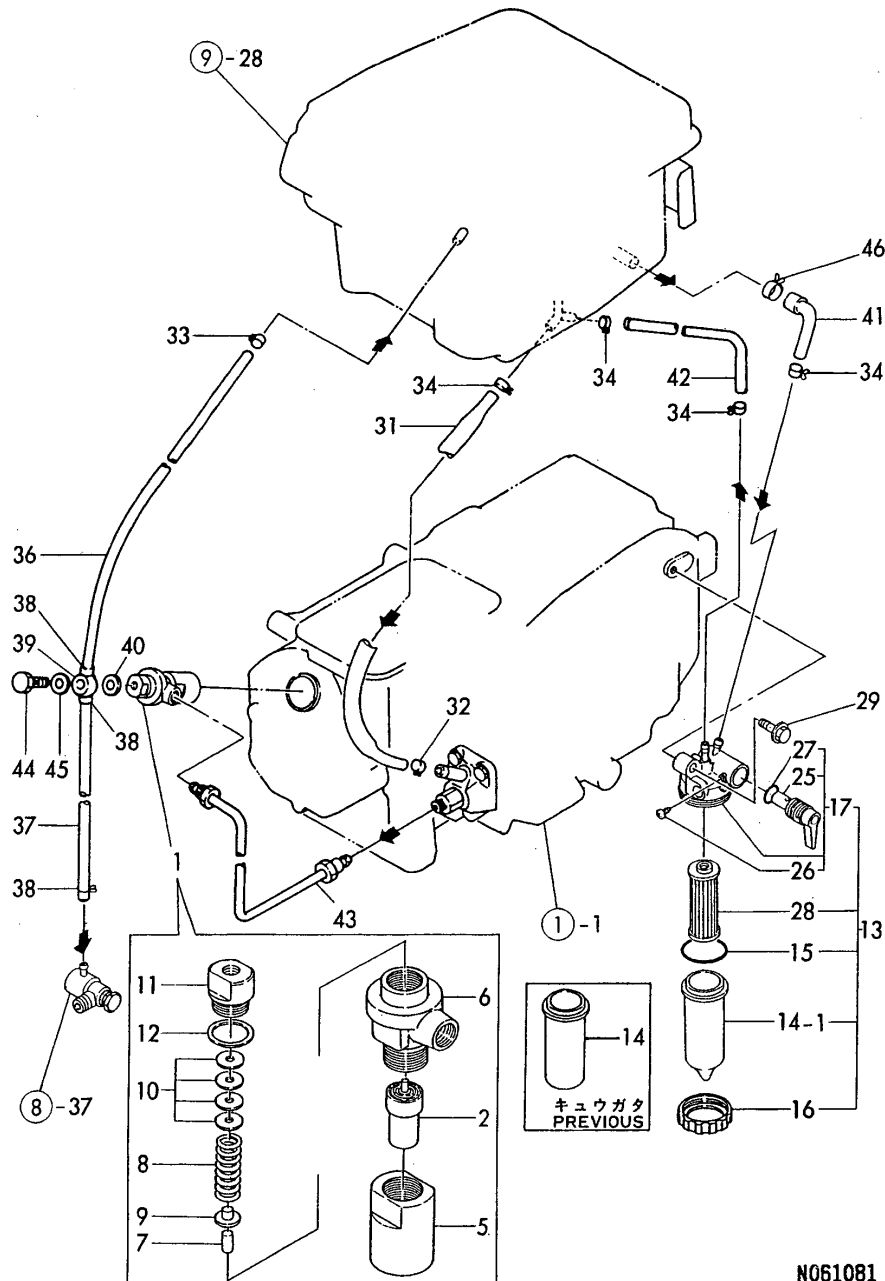
11. FUEL OIL INJECTION PUMP



REF.	LEV.	PARTS NO.	DESCRIPTION	QTY						I	R
				(A)	(B)	(C)	(D)	(E)	(F)		
1	1	705470-51100	FUEL INJECTION PUMP	1							
3	2	105370-51100	PLUNGER W/BARREL	1							
6	2	174307-51170	RETAINER A	1							
7	2	174307-51181	RETAINER B	1							
8	2	124950-51190	SPRING, PLUNGER	1							
9	2	724550-51520	GUIDE ASSY, PLUNGER	1							
11	3	711100-51540	ROLLER ASSY	1							
14	3	174100-54120	PIN, ROLLER	1							
16	2	105370-51300	VALVE W/BALL	1							
19	2	124550-51320	SPRING, DELIV. VALVE	1							
20	2	124550-51341	RETAINER	1							
21	2	124550-51350	GASKET, DELIVERY	1							
22	2	124550-51370	O-RING, DELIVERY	1							
23	2	104271-51450	PIECE, GUIDE	1							
24	2	104271-51460	CIRCLIP	1							
25	2	105300-51500	RACK	1							
26	2	105300-51510	PINION	1							
27	2	105300-51550	RETAINER	1							
28	2	174307-51700	SHIM SET	1							
31	2	26022-050102	SCREW M 5X 10	1							

Fig.12. FUEL OIL SYSTEM

12. FUEL OIL SYSTEM



N051081

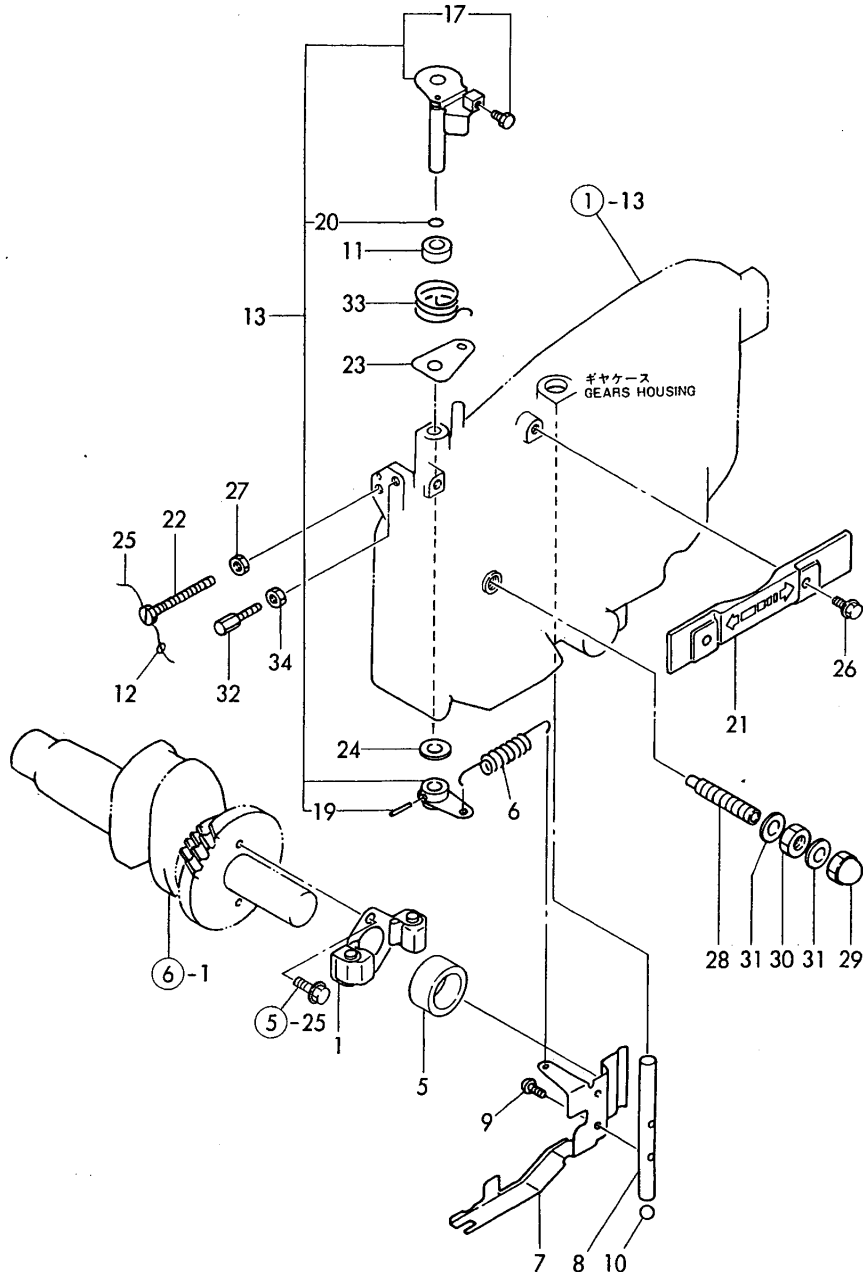
NPC-2165 12. FUEL OIL SYSTEM

(A)=NF90-LED (D)=
(B)= (E)=
(C)= (F)=

REF.	LEV.	PARTS NO.	DESCRIPTION	QTY						I	R
				(A)	(B)	(C)	(D)	(E)	(F)		
2	2	172100-53000	NOZZLE ASSY,F.INJECT	1							
5	2	104500-53080	HOLDER, VALVE W/CASE	1							
6	2	103854-53100	BODY, F.I. VALVE	1							
7	2	113200-53110	SPINDLE, INTER	1							
8	2	103854-53120	SPRING, NOZZLE	1							
9	2	113200-53120	SHOE, SPRING	1							
10	2	110250-53150	SHIM SET	1							
11	2	103854-53180	RETAINER, NOZ.SPRING	1							
12	2	172100-53200	GASKET	1							
13	1	105370-55600	STRAINER ASSY, FUEL	1							
I 13-1	1	105370-55650	STRAINER ASSY, FUEL	1							N
(A=1990.09)											
14	2	105300-55510	BOWL, STRAINER	1							
I 14-1	2	105300-55530	BOWL, STRAINER	1							N
(A=1990.09)											
15	2	105300-55520	O-RING, BOWL	1							
16	2	105300-55610	RING, RETAINER	1							
17	2	105300-55700	BODY ASSY, STRAINER	1							
25	3	105300-55340	LEVER	1							
26	3	104200-55750	SCREW M 4	1							
27	3	24311-000160	O-RING 1A P-16.0	1							
28	2	105370-55710	ELEMENT,FO. STRAINER	1							
29	1	26106-080302	BOLT M 8X 30 PLATED	1							
31	1	105300-59510	PIPE, FUEL OIL	1							
32	1	124766-59050	CLAMP 12	1							
33	1	124722-59050	CLAMP 9	1							
34	1	124766-59050	CLAMP 12	4							
36	1	105370-59100	PIPE, FUEL OIL	1							
37	1	105192-59100	PIPE, FUEL OIL	1							
38	1	124722-59050	CLAMP 9	3							
39	1	105225-59090	JOINT	1							
39-1	1	105370-59090	JOINT	1							N
(A=*1988.05)											
40	1	104884-59170	GASKET	1							
41	1	105300-59561	PIPE, FUEL OIL	1							
42	1	105300-59570	PIPE, FUEL OIL	1							
43	1	105370-59800	PIPE, FUEL INJECTION	1							
44	1	101147-59810	BOLT, PIPE JOINT	1							
45	1	23414-080012	GASKET 8	1							
46	1	129301-03660	CLAMP 16	1							

Fig.13. GOVERNOR & CONTROL DEVICE

13. GOVERNOR & CONTROL DEVICE



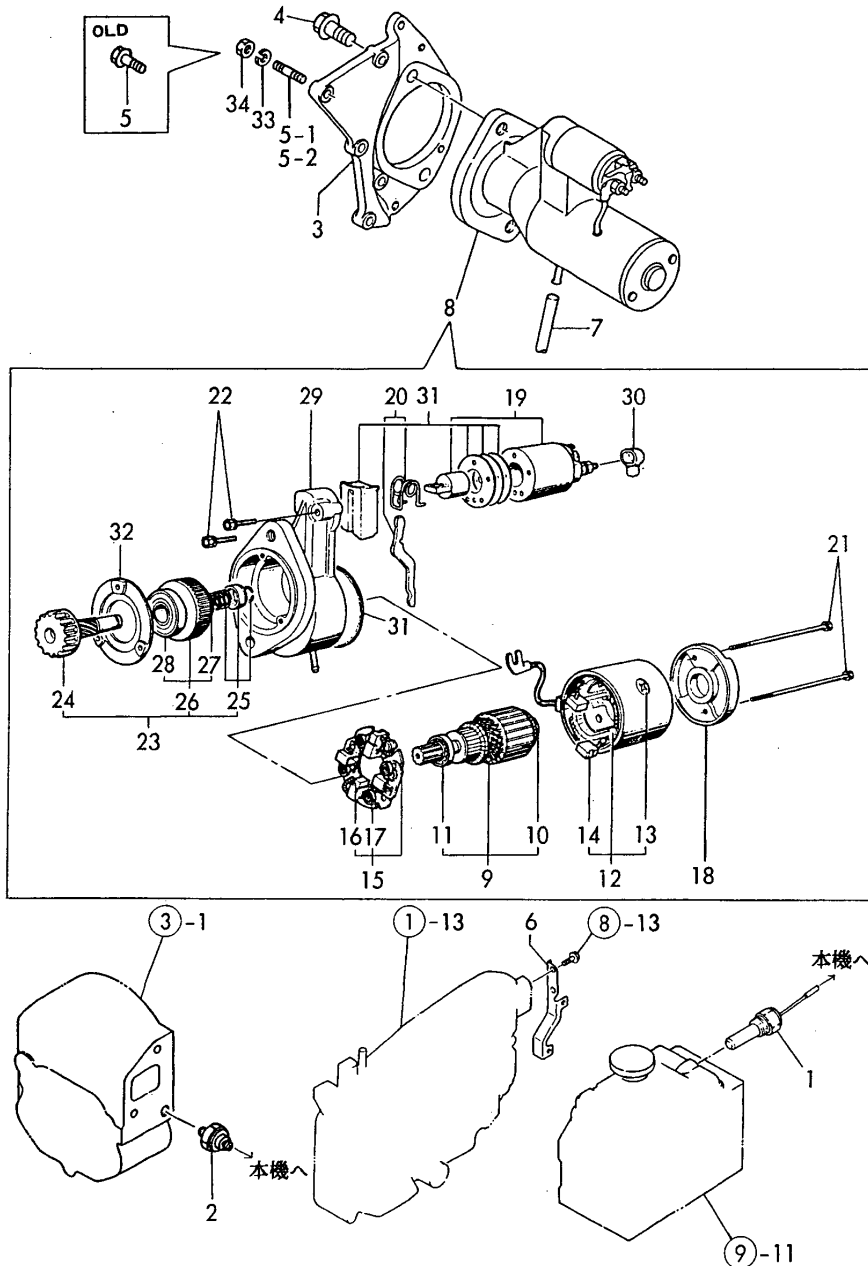
(A)=NF90-LED (D)=
 (B)= (E)=
 (C)= (F)=

REF.	LEV.	PARTS NO.	DESCRIPTION	QTY						I	R
				(A)	(B)	(C)	(D)	(E)	(F)		
1	1	705300-61701	GOVERNOR ASSY.	1							
5	1	105300-61600	SLEEVE, GOVERNOR	1							
I 5-1	1	10530H-61600	SLEEVE, GOVERNOR	1							R
		(A=1989.11)									
I 5-2	1	105300-61600	SLEEVE, GOVERNOR	1							R
		(A=1989.11)									
6	1	105300-66010	SPRING, REGULATOR	1							
7	1	105300-66300	LEVER, GOVERNOR	1							
8	1	105300-66400	SHAFT, GOV. LEVER	1							
9	1	26022-050102	SCREW M 5X 10	2							
10	1	24190-120001	BALL 3/8,STEEL	1							
11	1	121575-21850	WASHER	1							
12	1	135210-61090	LEAD	1							
13	1	705302-66530	HANDLE ASSY, REGLAT	1							
17	3	105225-66990	SCREW	1							
19	2	22322-030200	TAPER PIN 3X20	1							
20	2	24311-000070	O-RING 1A P-7.0	1							
21	1	105300-66110	COVER	1							
22	1	105300-66520	SCREW	1							
23	1	105300-66850	RETAINER	1							
24	1	22117-100000	WASHER 10	1							
25	1	22451-060080	WIRE 0.6X80	1							
26	1	26033-060142	SCREW M 6X 14	2							
26-1	1	26106-060122	BOLT M 6X 12 PLATED	2							N
		(A=*1986.10)									
27	1	26756-060002	LOCK NUT M 6 PLATED	1							
28	1	105300-66550	LIMITTER, FUEL	1							
28-1	1	105300-66551	LIMITTER, FUEL	1							N
		(A=*1988.05)									
29	1	124060-66950	CAP NUT	1							
30	1	26796-100002	NUT M10,LOCK	1							
31	1	43400-500430	SEAL WASHER 10	2							
32	1	102100-67080	BOLT, ADJUSTING	1							
33	1	105302-67300	SPRING	1							
33-1	1	105502-67301	SPRING	1							N
		(A=EXXXXXX)									
34	1	26756-060002	LOCK NUT M 6 PLATED	1							

Fig.14. STARTING MOTOR

(A)=NF90-LED (D)=
(B)= (E)=
(C)= (F)=

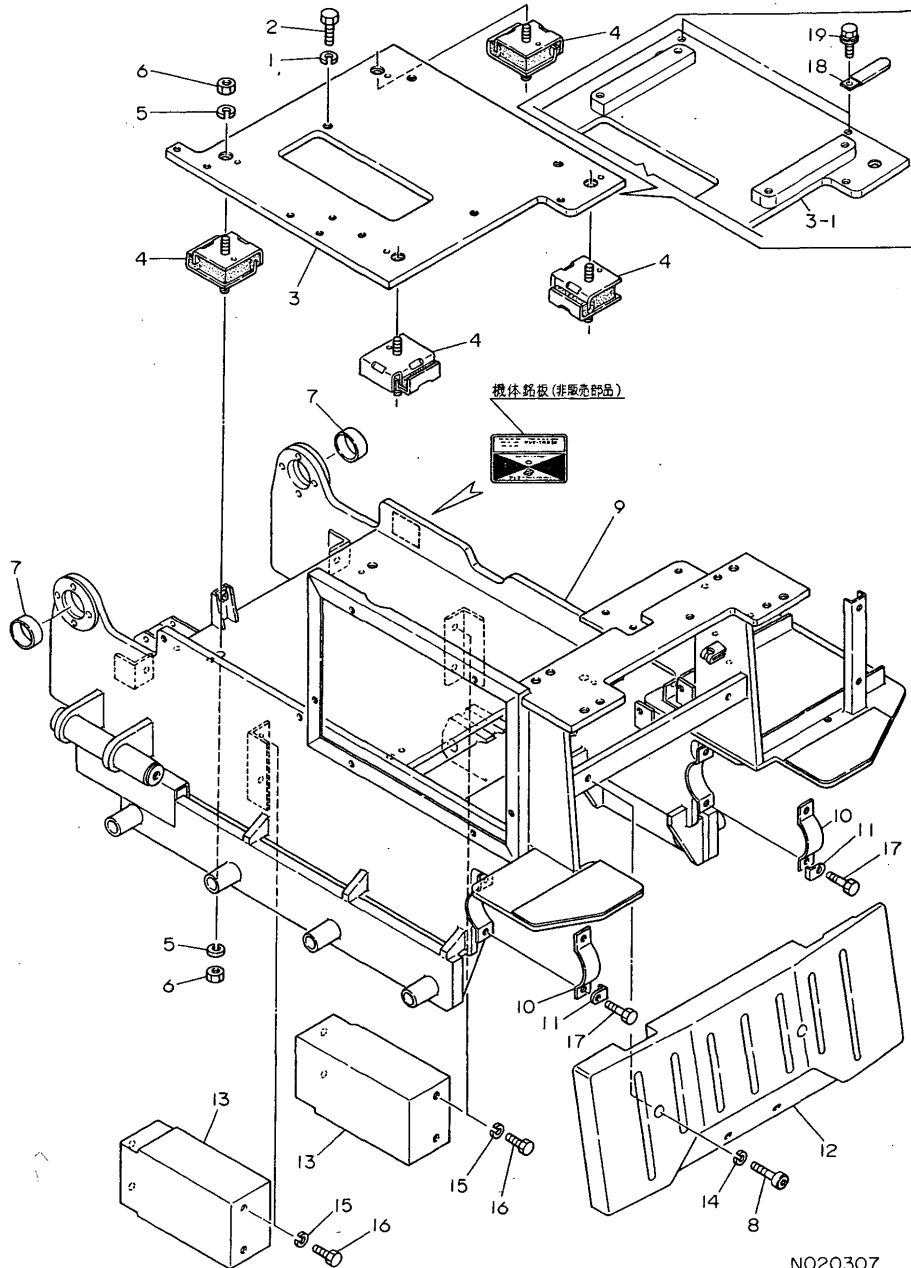
14. STARTING MOTOR



REF.	LEV.	PARTS NO.	DESCRIPTION	QTY						I	R
				(A)	(B)	(C)	(D)	(E)	(F)		
1	1	105300-44900	SENDER	1							
2	1	124060-39451	SENDER, OIL PRESSURE	1							
3	1	105300-77470	BRACKET	1							
4	1	26013-120302	BOLT W/WASHER M12X30	2							
5	1	26013-060222	BOLT M 6X 22	4							
5-1	1	26216-060222	STUD M 6X 22 PLATED	4							S
		(A=1987.01)									
5-2	1	26216-060202	STUD M 6X 20 PLATED	4							N
		(A=1987.07)									
6	1	105302-77480	RETAINER	1							
7	1	105840-59100	PIPE, FUEL	1							
8	1	105300-77010	STARTER MOTOR	1							
9	2	X211461005	ARMATURE	1							
10	3	X211415502	BALL BEARING	1							
11	3	X211425502	BALL BEARING	1							
12	2	X211482003	COIL ASSY, FIELD	1							
13	3	X21143215	SCREW, CORE	4							
14	3	X211469002	BRUSH (+)	2							
15	2	X211449007	HOLDER ASSY, BRUSH	1							
16	3	X211459002	BRUSH (-)	2							
17	3	X21148314	SPRING, BRUSH	4							
18	2	X211483003	COVER, REAR	1							
19	2	X211447007	SWITCH, MAGNETIC	1							
20	2	X211446012	LEVER, SHIFT	1							
21	2	X211468005	THROUGH BOLT	2							
22	2	X21145866	BOLT	2							
23	2	X211455011	PINION ASSY	1							
24	3	X211465011	SHAFT, PINION	1							
25	3	X211429006	STOPPER SET	1							
26	3	X211425506	CLUTCH ASSY	1							
27	4	X211435502	BALL BEARING	1							
28	4	X211455502	BALL BEARING	1							
29	2	X211446605	CASE ASSY, GEAR	1							
30	2	X21142742	COVER (A), RUBBER	1							
31	2	X211458012	DUST COVER SET	1							
32	2	X211428008	RETAINER, BEARING	1							
33	1	22217-060000	SPRING WASHER 6	4							W
		(A=1987.01)									
34	1	26716-060002	NUT M 6	4							W
		(A=1987.01)									

Fig.1. ENGINE INSTALLING

1. ENGINE INSTALLING



NO20307

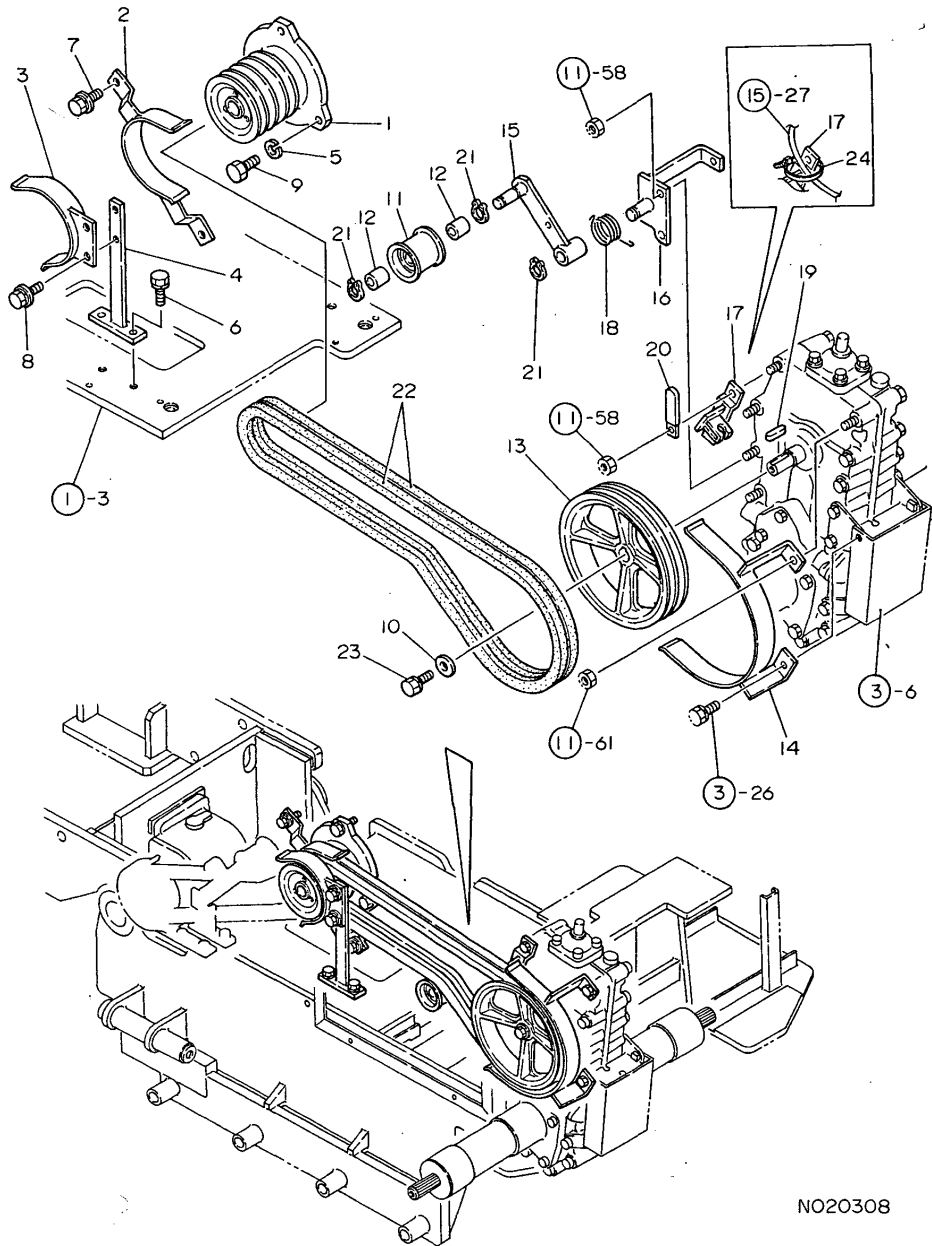
NPC-2204 1. ENGINE INSTALLING

(A)=YMD50 (D)=
(B)= (E)=
(C)= (F)=

REF.	LEV.	PARTS NO.	DESCRIPTION	QTY						I	R
				(A)	(B)	(C)	(D)	(E)	(F)		
1	1	22217-120000	WASHER 12,SPRING	4							
2	1	26116-120302	BOLT M12X 30 PLATED	4							
I 2-1	1	26116-120322	BOLT M12X 32 PLATED	4							N
(A=FXXXXXX)											
3	1	1E3001-01030	BED,ENGINE	1							
3-1	1	1E3001-01050	BED COMP.,ENGINE	1							S
(A=FXXXXXX)											
4	1	1E6470-01350	RUBBER 34X76.2,S.A.	4							
5	1	22217-120000	WASHER 12,SPRING	8							
6	1	26716-120002	NUT M12	8							
6-1	1	26717-120002	NUT M12	8							N
(A=FXXXXXX)											
7	1	1E3000-11280	BUSH	2							
8	1	1E3000-23900	BOLT 12X45,HEX.SH.	2							
9-1	1	1E3001-71011	FRAME,CHASSIS	1							N
(A=FXXXXXX)											
10	1	1E6150-71360	PLATE,FINAL CLMP,FRT	2							
I 10-1	1	1E3001-71750	PLATE CMP,FINAL CLMP	2							N
(A=FXXXXXX)											
11	1	1E6150-71370	WASHER, LOCKING	4							
12	1	1E3001-71650	WEIGHT,BALANCE	1							
13	1	1E3001-71660	WEIGHT 16	2							Z
(A=FXXXXXX)											
14	1	22217-120000	WASHER 12,SPRING	2							
15	1	22217-120000	WASHER 12,SPRING	6							Z
(A=FXXXXXX)											
16	1	26116-120252	BOLT M12X 25 PLATED	6							Z
(A=FXXXXXX)											
17	1	26117-100402	BOLT 10X40	4							
I 17-1	1	26117-100452	BOLT M10X 45 PLATED	4							N
(A=F810066)											
18	1	1E6020-83890	CLIP	2							W
(A=FXXXXXX)											
I 18-1	1	1E6020-83890	CLIP	2							Z
(A=F810171)											
19	1	26018-080164	BOLT M 8X 16	2							W
(A=FXXXXXX)											
I 19-1	1	26018-080164	BOLT M 8X 16	2							Z
(A=F810171)											

Fig.2. PULLEY

2. PULLEY



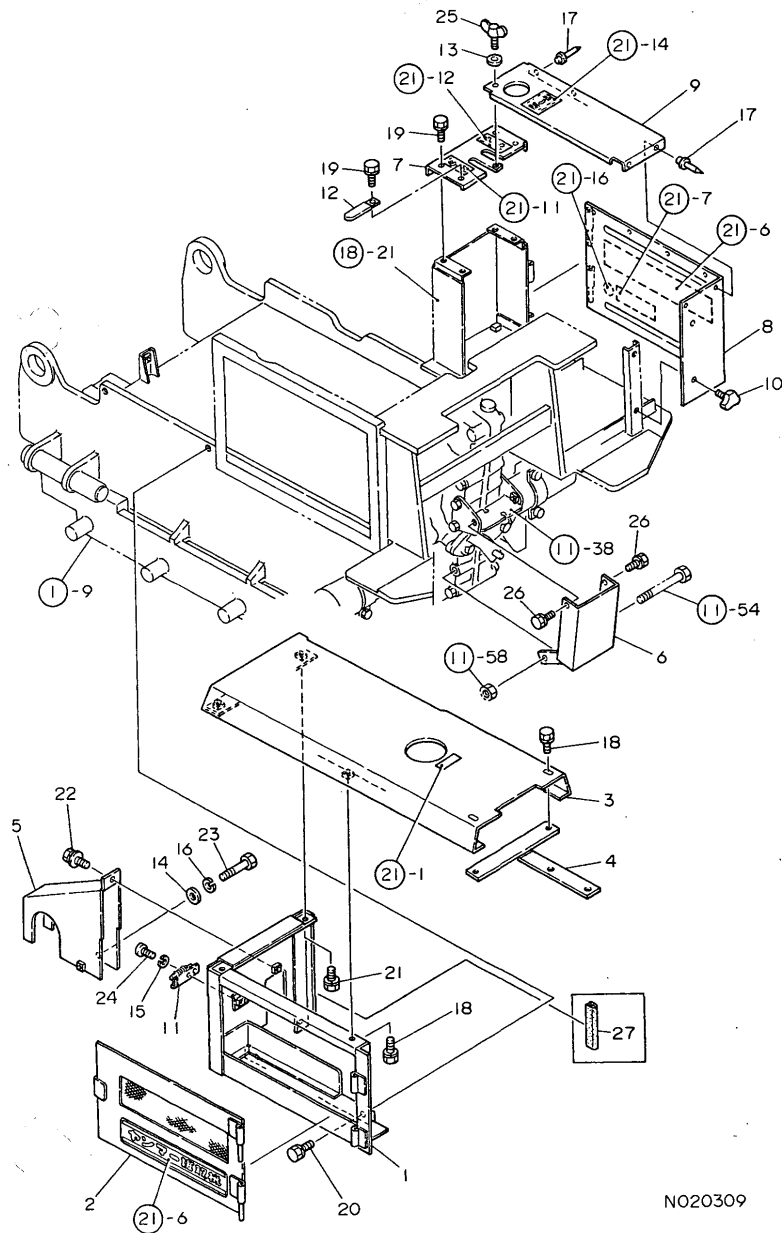
NO20308

(A)=YMD50 (D)=
(B)= (E)=
(C)= (F)=

REF.	LEV.	PARTS NO.	DESCRIPTION	QTY						I	R
				(A)	(B)	(C)	(D)	(E)	(F)		
1	1	1E3001-01020	PULLEY 100-B4	1							
2	1	1E3001-01100	RETAINER 1,BELT	1							
I	2-1	1E3002-01100	RETAINER 1,BELT	1							N
(A=F810239)											
3	1	1E3001-01150	RETAINER 2,BELT	1							
4	1	1E3001-01190	SEAT,BELT RETAINER	1							
5	1	22217-120000	WASHER 12,SPRING	3							
6	1	26016-080202	BOLT M 8X 20	2							
6-1	1	26016-080204	BOLT M 8X 20	2							N
(A=FXXXXXX)											
I	6-2	1 26018-080204	BOLT M 8X 20	2							N
(A=FXXXXXX)											
7	1	26018-080162	BOLT M 8X 16	2							
7-1	1	26018-080164	BOLT M 8X 16	2							N
(A=FXXXXXX)											
8	1	26018-080162	BOLT M 8X 16	2							
8-1	1	26018-080164	BOLT M 8X 16	2							N
(A=FXXXXXX)											
9	1	26116-120352	BOLT M12X 35 PLATED	3							
10	1	1E6020-25340	SPACER 9X28X4.5	1							
11	1	7E6150-51500	ROLLER, TENSION	1							
12	1	24550-015100	BUSH 15X10	2							
13	1	1E3001-52000	PULLEY 211-B2	1							
14	1	1E3001-52010	RETAINER 3,BELT	1							
I	14-1	1E3001-52011	RETAINER 3,BELT	1							N
(A=FXXXXXX)											
15	1	1E3001-52050	ARM 2,TENSION	1							
16	1	1E3001-52080	SEAT 2,TENSION	1							
17	1	1E3001-52120	BRACKET,WIRE	1							
18	1	1E3001-52170	SPRING L	1							
19	1	1E4070-79020	KEY 5X5X30	1							
20	1	1E6020-83890	CLIP	1							
21	1	22242-000150	CIRCLIP 15	3							
22	1	25123-005800	V-BELT	2							
23	1	26016-080202	BOLT M 8X 20	1							
I	23-1	26013-080202	BOLT W/WASHER M8X20	1							N
(A=FXXXXXX)											
24	1	1E6150-83910	BAND 195	1							W
(A=FXXXXXX)											

Fig.3. COVER

3. COVER



N020309

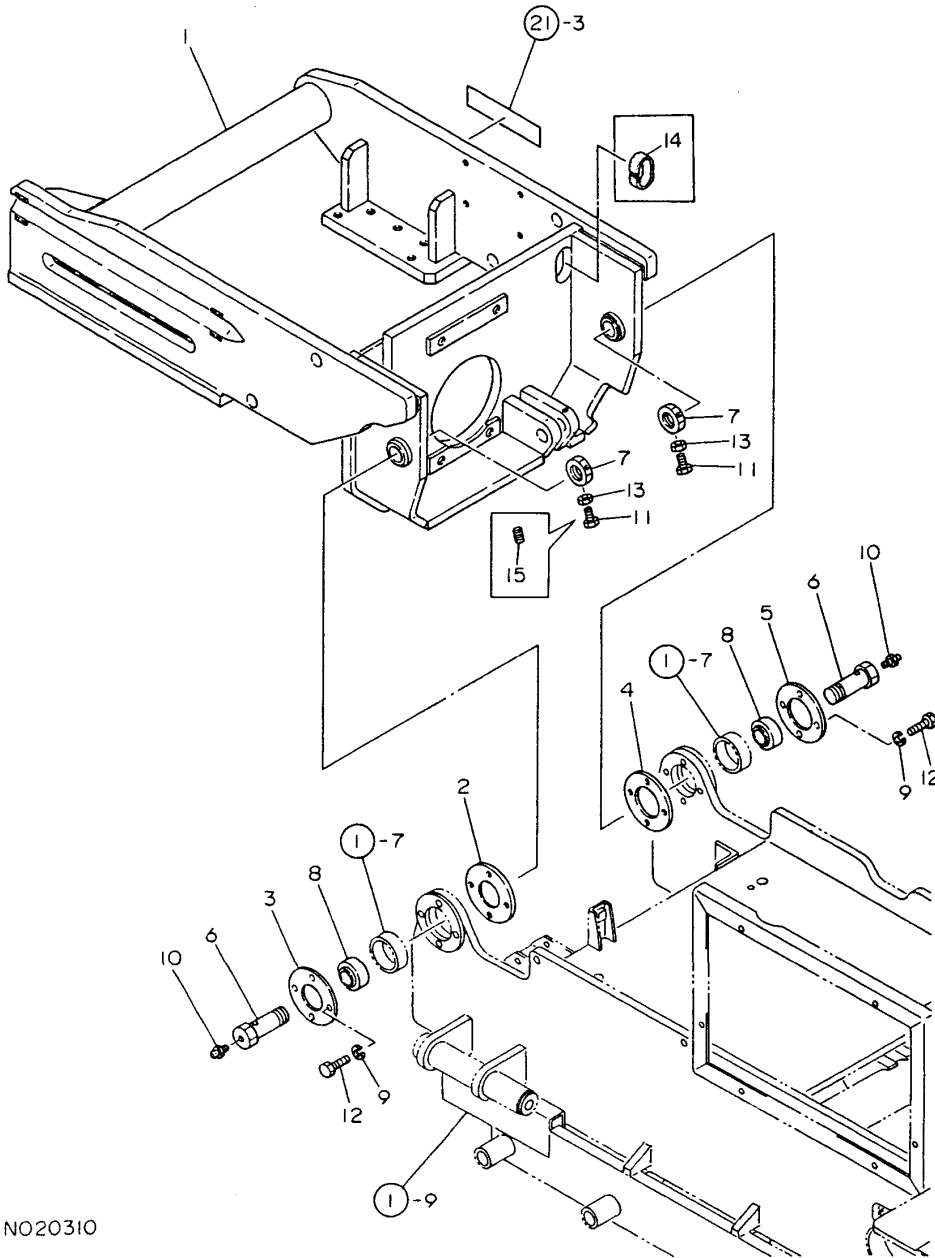
NPC-2204 3. COVER

(A)=YMD50 (D)=
(B)= (E)=
(C)= (F)=

REF.	LEV.	PARTS NO.	DESCRIPTION	QTY						I	R
				(A)	(B)	(C)	(D)	(E)	(F)		
1	1	1E3001-01340	COVER L	1							
2	1	1E3001-01450	LID,COVER L	1							
3	1	1E3001-01550	BONNET	1							
4-1	1	1E3001-01601	SEAT,BONNET	1							N
		(A=FXXXXXX)									
5-1	1	1E3001-01651	COVER,P.T.O.	1							N
		(A=FXXXXXX)									
6	1	1E3001-01700	COVER,TRANSMISSION	1							
7	1	1E3001-01800	COVER,VALVE	1							
8	1	1E3001-01850	PLATE,COVER R SIDE	1							
9	1	1E3001-01900	COVER R,UPPER	1							
10	1	1A1120-61450	WING BOLT	2							
11	1	1E6210-82580	FASTENER	1							
12	1	1E6020-83890	CLIP	1							
13	1	22137-060000	WASHER 6, POLISHED	1							
14	1	22137-080000	WASHER 8, POLISHED	1							
I 15	1	22217-050000	SPRING WASHER 5	2							Z
		(A=FXXXXXX)									
16	1	22217-080000	SPRING WASHER 8	1							
17	1	22687-320501	RIVET 3.2X 5	6							
18	1	26016-060162	BOLT M 6X 16	3							
18-1	1	26016-060164	BOLT 6X16 W/L.W.	3							N
		(A=FXXXXXX)									
I 18-2	1	26018-060164	BOLT M 6X 16	3							N
		(A=FXXXXXX)									
19	1	26016-060162	BOLT M 6X 16	4							
19-1	1	26016-060164	BOLT 6X16 W/L.W.	4							N
		(A=FXXXXXX)									
I 19-2	1	26018-060164	BOLT M 6X 16	4							N
		(A=FXXXXXX)									
20	1	26016-080162	BOLT M 8X 16	3							
20-1	1	26016-080164	BOLT M 8X 16	3							N
		(A=FXXXXXX)									
21	1	26016-080162	BOLT M 8X 16	2							
21-1	1	26016-080164	BOLT M 8X 16	2							N
		(A=FXXXXXX)									
I 21-2	1	26018-080164	BOLT M 8X 16	2							N
		(A=FXXXXXX)									
22	1	26018-060164	BOLT M 6X 16	1							
23	1	26117-080702	BOLT M 8X 70 PLATED	1							
24	1	26557-050122	SCREW M 5X 12	2							
I 24-1	1	26022-050122	SCREW M 5X 12	2							N
		(A=FXXXXXX)									
25	1	26645-060122	WING BOLT M 6X12	1							
26	1	26016-080162	BOLT M 8X 16	2							
26-1	1	26016-080164	BOLT M 8X 16	2							N
		(A=FXXXXXX)									
I 26-2	1	26018-080204	BOLT M 8X 20	2							N
		(A=FXXXXXX)									
27	1	1E6460-32300	WASHER 10	1							W
		(A=FXXXXXX)									

Fig.4. VIBRATOR FRAME

4. VIBRATOR FRAME



NPC-2204 4. VIBRATOR FRAME

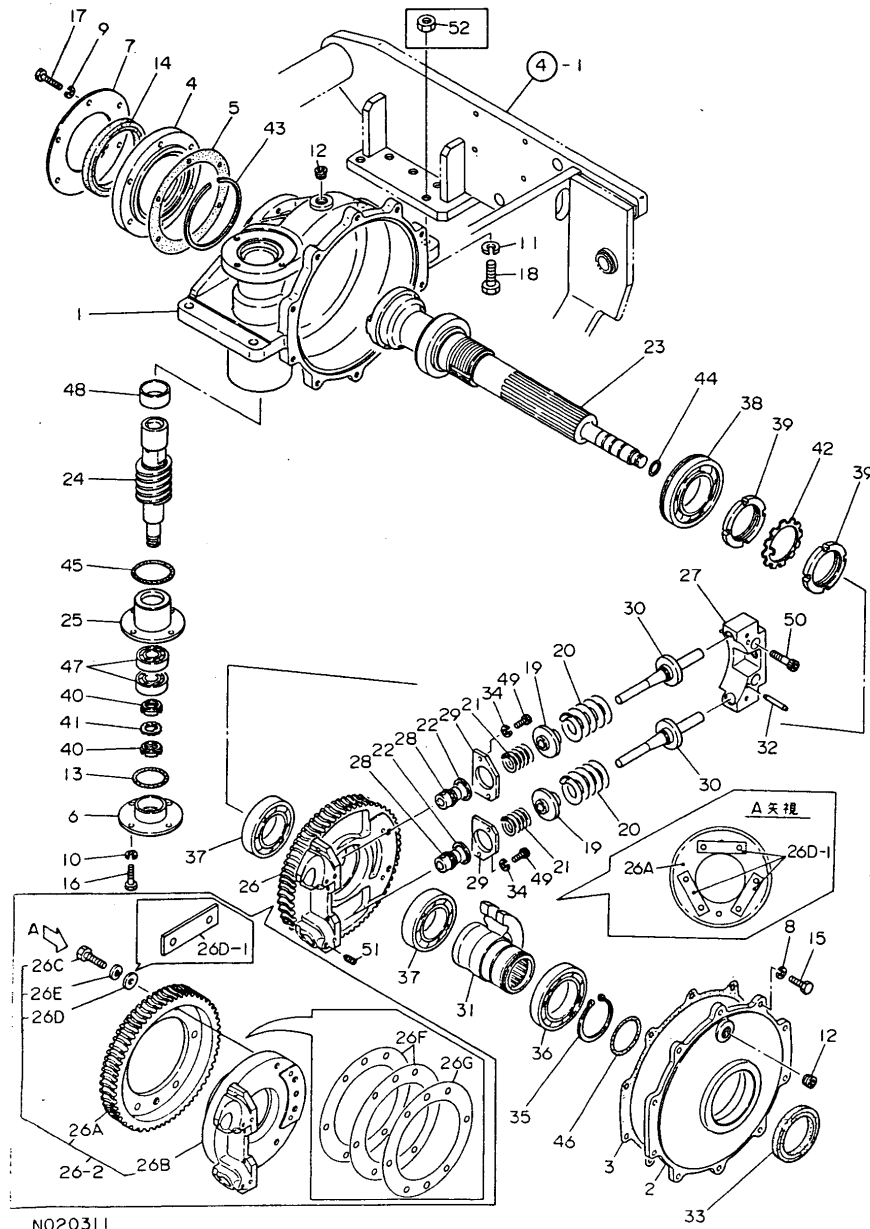
(A)=YMD50 (D)=
 (B)= (E)=
 (C)= (F)=

REF.	LEV.	PARTS NO.	DESCRIPTION	QTY						I	R
				(A)	(B)	(C)	(D)	(E)	(F)		
1	1	1E3001-11010	FRAME,VIBRATOR	1							
2	1	1E3000-11250	PLATE A,LINK	1							
3	1	1E3000-11260	PLATE B,LINK	1							
4	1	1E3000-11290	PLATE C,LINK	1							
5	1	1E3000-11300	PLATE D,LINK	1							
6	1	1E3001-11450	PIN 25,HINGE	2							
7	1	1E3001-11470	NUT 25XP1.5	2							
8	1	1E3000-11900	SHAFT SUPPORT	2							
I 9	1	22217-080000	SPRING WASHER 8	8							Z
(A=FXXXXXX)											
10	1	24761-010000	NIPPLE M6F, GREASE	2							
I 11	1	26116-060162	BOLT M 6X 16 PLATED	6							Z
(A=FXXXXXX)											
12	1	26116-080302	BOLT M 8X 30 PLATED	8							
I 12-1	1	26013-080302	BOLT M 8X 30	8							N
(A=FXXXXXX)											
13	1	26716-060002	NUT M 6	6							
13-1	1	26717-060002	NUT M 6	6							N
(A=FXXXXXX)											
14	1	1E3000-67420	RUBBER B,HOSE RETAIN	1							W
(A=FXXXXXX)											
I 15	1	26979-060162	SCREW M 6X16	6							W
(A=FXXXXXX)											

Fig.5. REDUCTION GEAR SHAFT

(A)=YMD50 (D)=
(B)= (E)=
(C)= (F)=

5. REDUCTION GEAR SHAFT



N020311

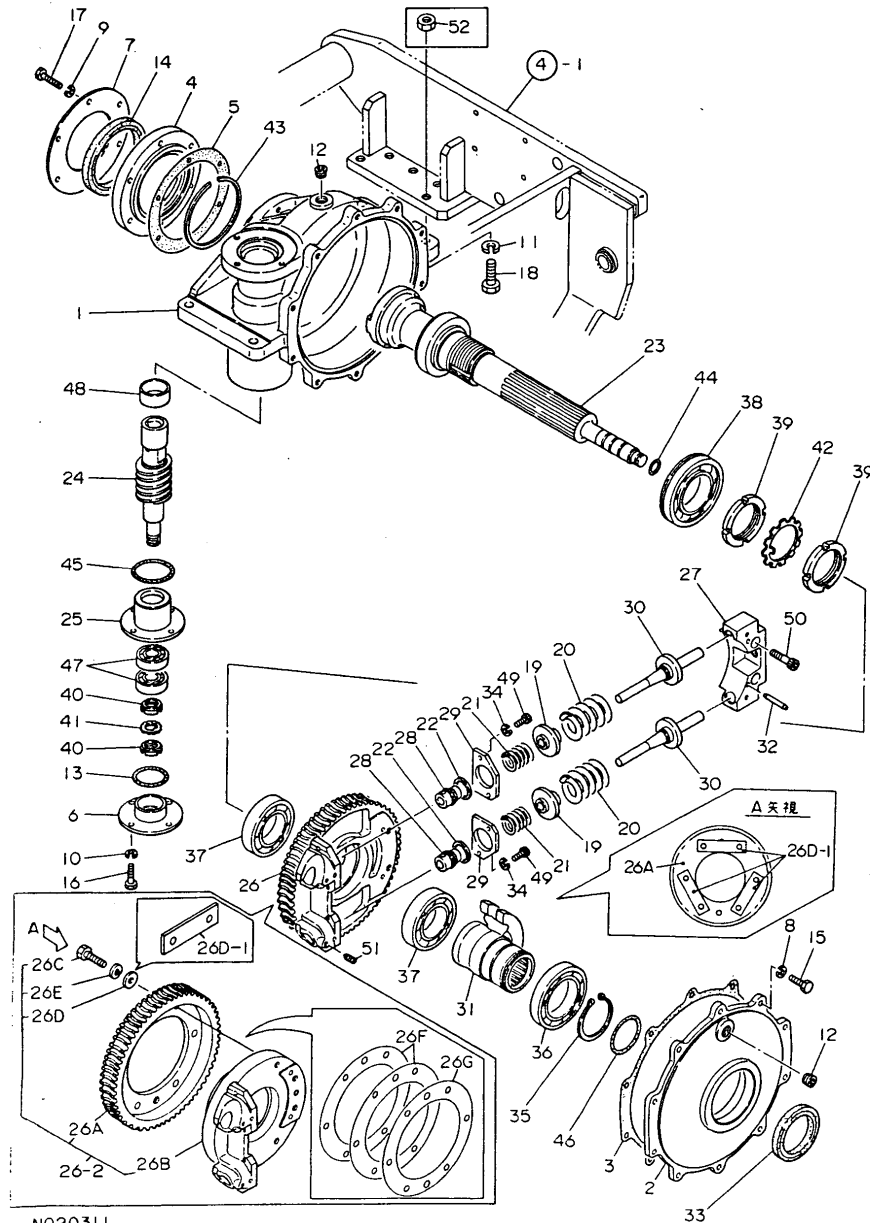
REF.	LEV.	PARTS NO.	DESCRIPTION	QTY						I	R
				(A)	(B)	(C)	(D)	(E)	(F)		
1	1	1E3001-12010	CASE,REDUCTION	1							
2	1	1E3001-12020	COVER,REDUCTION CASE	1							
3	1	1E3001-12030	CASE PACKING A	1							
4	1	1E3001-12050	COVER,REDUCT.CS.FRNT	1							
5	1	1E3001-12060	CASE PACKING B	1							
6	1	1E3001-12080	SHIFTER,REDUCT.CASE	1							
7	1	1E3001-12100	PLATE,SEAL KEEP	1							
I 8	1	22217-080000	SPRING WASHER 8	10							Z
		(A=FXXXXXX)									
I 9	1	22217-080000	SPRING WASHER 8	6							Z
		(A=FXXXXXX)									
10	1	22217-080000	SPRING WASHER 8	4							
11	1	22217-120000	WASHER 12,SPRING	4							
12	1	23871-030000	PLUG PT3/8,SCREW	2							
13	1	24321-000450	O-RING 1A G-45.0	1							
14	1	24421-952013	SEAL	1							
15	1	26116-080302	BOLT M 8X 30 PLATED	10							
I 15-1	1	26013-080302	BOLT M 8X 30	10							N
		(A=FXXXXXX)									
16	1	26116-080302	BOLT M 8X 30 PLATED	4							
I 16-1	1	26013-080302	BOLT M 8X 30	4							N
		(A=FXXXXXX)									
17	1	26116-080402	BOLT M 8X 40 PLATED	6							
18	1	26116-120402	BOLT M12X 40	4							
I 18-1	1	26116-120552	BOLT M12X 55 PLATED	4							N
		(A=FXXXXXX)									
I 18-2	1	26116-120554	BOLT, M12X55	4							N
		(A=F810239)									
19	1	1E3000-12090	BUSH A,GUIDE	2							
20	1	1E3000-12120	COIL SPRING A	2							
21	1	1E3000-12130	COIL SPRING B	2							
22	1	1E3000-12150	LINER 26X35X3	2							
23	1	1E3001-12200	SHAFT,BLADE	1							
24	1	1E3001-12210	WORM	1							
I 24-1	1	1E3001-12400	WORM COMPL.	1							S
		(A=F810239)									
25	1	1E3001-12220	BEARING,WORM	1							
26-1	1	1E3001-12231	WHEEL,WORM	1							N
		(A=FXXXXXX)									
26-2	1	1E3001-10230	WHEEL COMP.,WORM	1							S
I 26-3	1	1E3001-10231	WHEEL COMP.,WORN	1							N
		(A=F810016)									
26A	2	1E3001-12232	WHEEL,WORM	1							W
		(A=FXXXXXX)									
26B	2	1E3001-12260	BRACKET,WORM WHEEL	1							W
		(A=FXXXXXX)									
I 26B-1	2	1E3001-12261	BRACKY,WORM WHEEL	1							N
		(A=F810016)									
26C	2	26156-100352	BOLT M10X 35 PLATED	6							W
		(A=FXXXXXX)									
I 26C-1	2	26156-100302	BOLT M10X 30 PLATED	6							S
		(A=F810016)									
26D	2	22137-100000	WASHER 10,POLISHED	6							W
		(A=FXXXXXX)									

++ CONTINUE ++

Fig.5. REDUCTION GEAR SHAFT

(A)=YMD50 (D)=
(B)= (E)=
(C)= (F)=

5. REDUCTION GEAR SHAFT

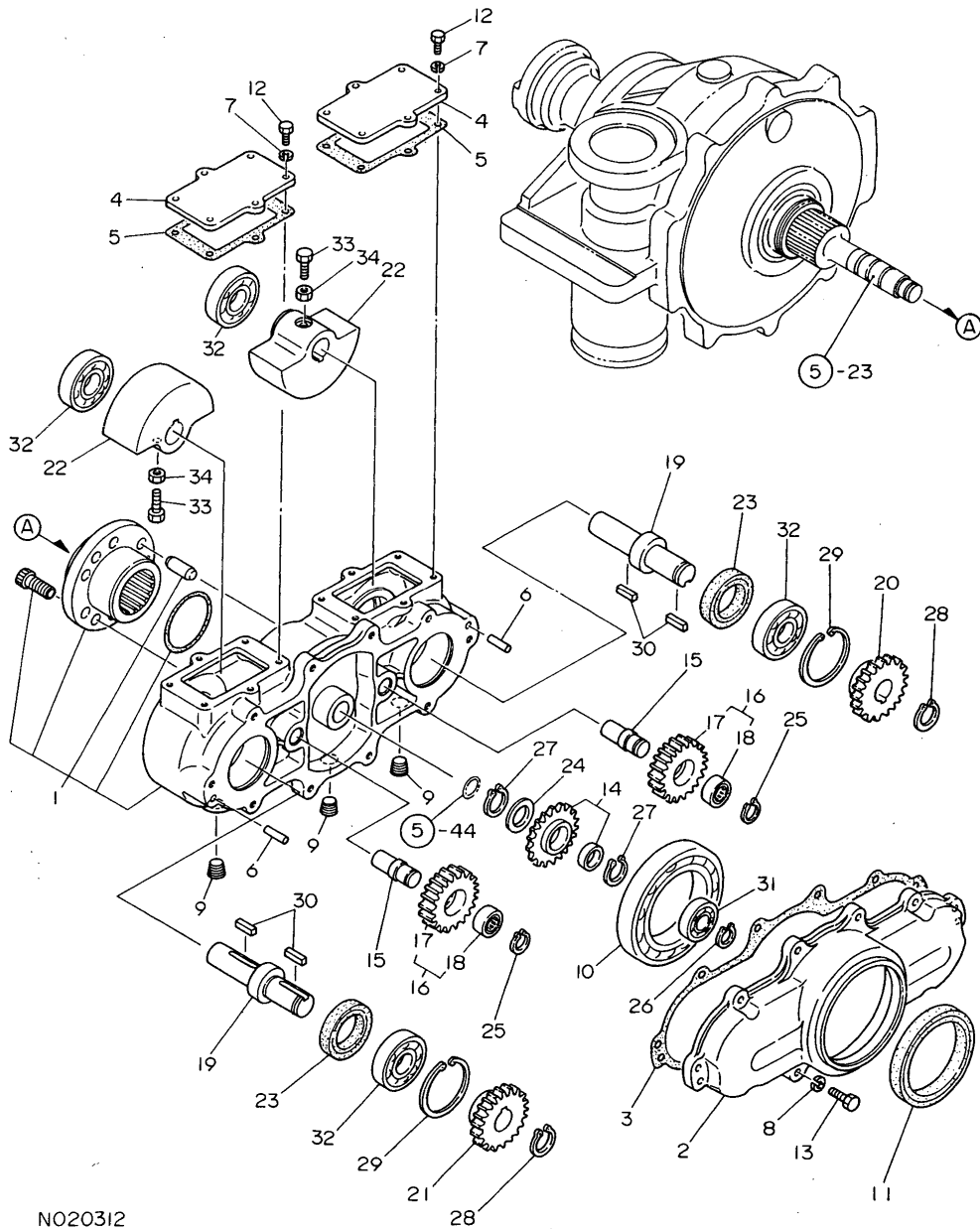


N020311

REF.	LEV.	PARTS NO.	DESCRIPTION	QTY						I	R
				(A)	(B)	(C)	(D)	(E)	(F)		
I	26D-1	2	1E3001-12880	PLATE,LOCKING	3						S
		(A=F810016)									
	26E	2	22212-100000	SPRING WASHER	6						W
		(A=FXXXXXX)									
I	26E-1	2	22212-100000	SPRING WASHER	6						Z
		(A=F810016)									
I	26F	2	1E3001-12860	SHIM 190X139X0.2	2						W
		(A=FXXXXXX)									
I	26G	2	1E3001-12870	SHIM 190X139X0.6	1						W
		(A=F810016)									
	27	1	1E3001-12240	BRACKET	1						
	27-1	1	1E3001-12241	BRACKET	1						S
		(A=FXXXXXX)									
	28	1	1E3001-12250	BUSH,GUIDE	2						
I	29	1	1E3001-12270	SEAT,SPRING	2						Z
		(A=F810016)									
	30	1	1E3001-12300	GUIDE PIN	2						
	31-1	1	1E3001-12321	ARM,ROCKER	1						N
		(A=FXXXXXX)									
	32	1	1E3001-12850	PIN 6X45,STRAIGHT	2						
	33	1	1E3001-12900	OIL SEAL TC658812	1						
I	34	1	22217-060000	SPRING WASHER 6	4						Z
		(A=F810016)									
	35	1	22242-000650	CIRCLIP 65	1						
	35-1	1	22242-000651	CIRCLIP 65	1						N
		(A=FXXXXXX)									
	36	1	24101-060134	BALL BEARING	1						
	37	1	24101-062104	BALL BEARING	2						
	38	1	24111-062124	BEARING 6212N	1						
	39	1	24211-060002	LOCK NUT M60	2						
	40	1	24217-020002	NUT	2						
	41	1	24231-020000	WASHER 20	1						
	42	1	24231-060000	WASHER 60	1						
	43	1	24242-001100	RING,BRG.NR110 SNAP	1						
	44	1	24311-000210	O-RING 1A P-21.0	1						
	45	1	24321-000550	O-RING 1A G-55.0	1						
	46	1	24321-000600	O-RING 1A G-60.0	1						
	47	1	24510-720414	BALL BEARING	2						
	48	1	24550-040200	BUSH 40X20,DRY	1						
I	49	1	26450-060162	BOLT M 6X 16	4						Z
		(A=F810016)									
	50	1	26450-100402	BOLT M10X 40	2						
	51	1	26979-060162	SCREW M 6X16	2						
I	52	1	26716-120002	NUT M12	4						W
		(A=FXXXXXX)									

Fig.6. VIBRATOR CASE

6. VIBRATOR CASE



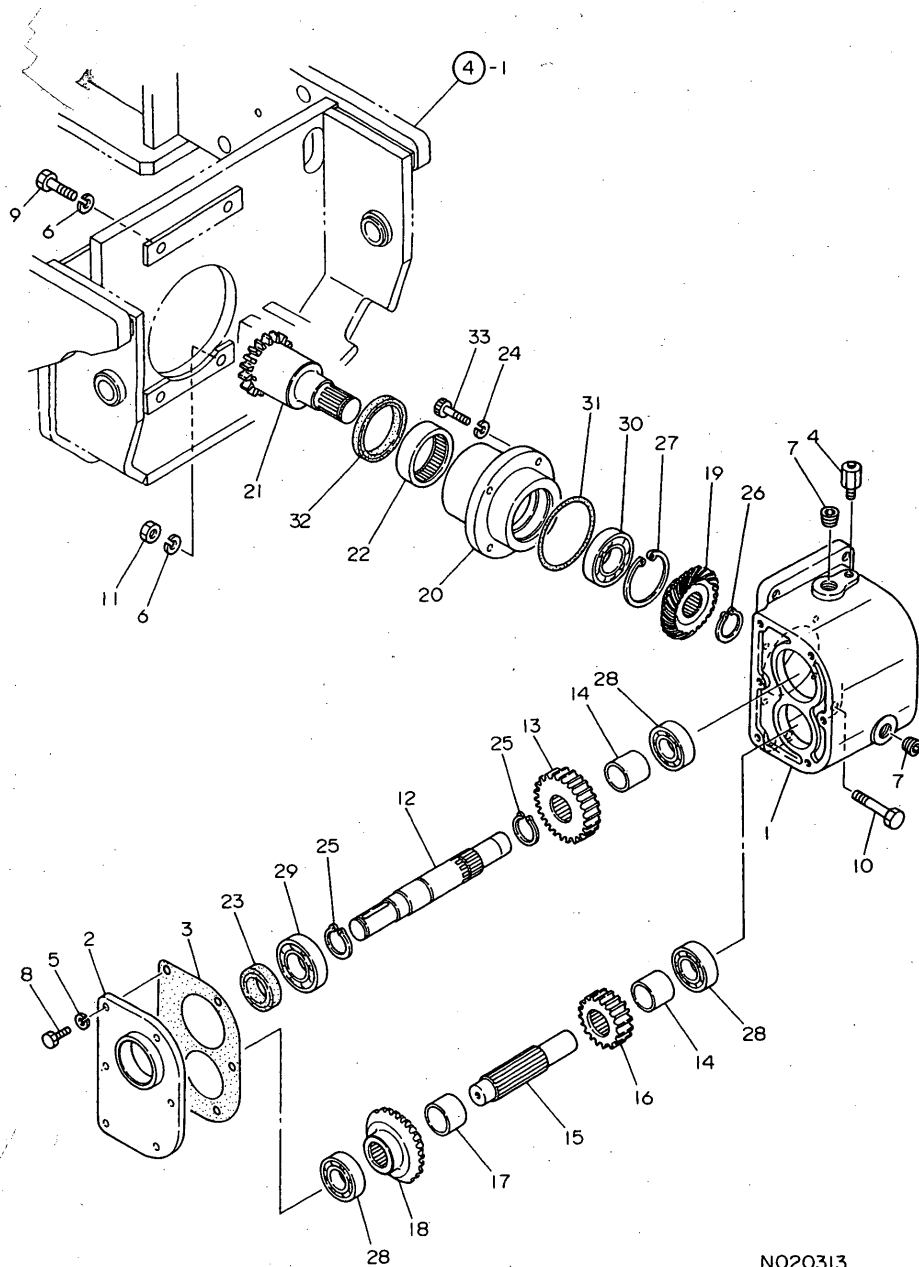
NPC-2204 6. VIBRATOR CASE

(A)=YMD50 (D)=
(B)= (E)=
(C)= (F)=

REF.	LEV.	PARTS NO.	DESCRIPTION	QTY						I	R
				(A)	(B)	(C)	(D)	(E)	(F)		
1	1	1E3001-13010	CASE,VIBRATOR	1							
2	1	1E3001-13050	COVER,VIBRATOR CASE	1							
2-1	1	1E3001-13051	COVER,VIBRATOR CASE	1							N
(A=FXXXXXX)											
3	1	1E3001-13060	VIVELATOR PACKING	1							
4	1	1E3001-13080	COVER,CASE	2							
5	1	1E3001-13090	CASE PACKING	2							
6	1	1A1040-26060	PIN 8X28, STRAIGHT	2							
7	1	22217-060000	SPRING WASHER 6	12							
I	8	1	22217-080000	SPRING WASHER 8	10						Z
(A=FXXXXXX)											
9	1	23871-030000	PLUG PT3/8,SCREW	3							
10	1	24101-060174	BALL BEARING	1							
11	1	24423-851013	SEAL TC851013, OIL	1							
12	1	26116-060162	BOLT M 6X 16 PLATED	12							
13	1	26116-080252	BOLT M 8X 25 PLATED	10							
I	13-1	1	26013-080252	BOLT M 8X 25	10						N
(A=FXXXXXX)											
14	1	1E3001-13150	GEAR 21A	1							
I	14-1	1	1E3001-13151	GEAR 21A	1						R
(A=FXXXXXX)											
15	1	1E3001-13170	COUNTERSHAFT	2							
16	1	1E3001-13180	GEAR 21B	2							
17	2	1E3001-13190	GEAR 21BX21B	2							
18	2	1E3001-13910	NEEDLE NAG4903	2							
19	1	1E3001-13200	SHAFT,VIBRATOR	2							
20	1	1E3001-13210	GEAR 21C	1							
21	1	1E3001-13220	GEAR 21D	1							
22	1	1E3001-13240	ECCENTRIC	2							
23	1	1E3001-13900	OIL SEAL TC406211	2							
24	1	192110-24031	LINER 25	1							
25	1	22242-000170	CIRCLIP 17	2							
26	1	22242-000200	CIRCLIP 20	1							
27	1	22242-000250	CIRCLIP 25S	2							
28	1	22242-000250	CIRCLIP 25S	2							
29	1	22252-000620	CIRCLIP 62(H)	2							
29-1	1	22252-000621	CIRCLIP 62	2							N
(A=FXXXXXX)											
30	1	22551-070250	KEY 7X25	4							
31	1	24101-060044	BALL BEARING 6004	1							
32	1	24101-063054	BEARING #6305	4							
33	1	26116-080252	BOLT M 8X 25 PLATED	2							
33-1	1	26116-080202	BOLT M 8X 20 PLATED	2							R
(A=FXXXXXX)											
34	1	26797-080002	LOCK NUT M 8	2							

Fig.7. ACCEL.SHAFT

7. ACCEL. SHAFT



N020313

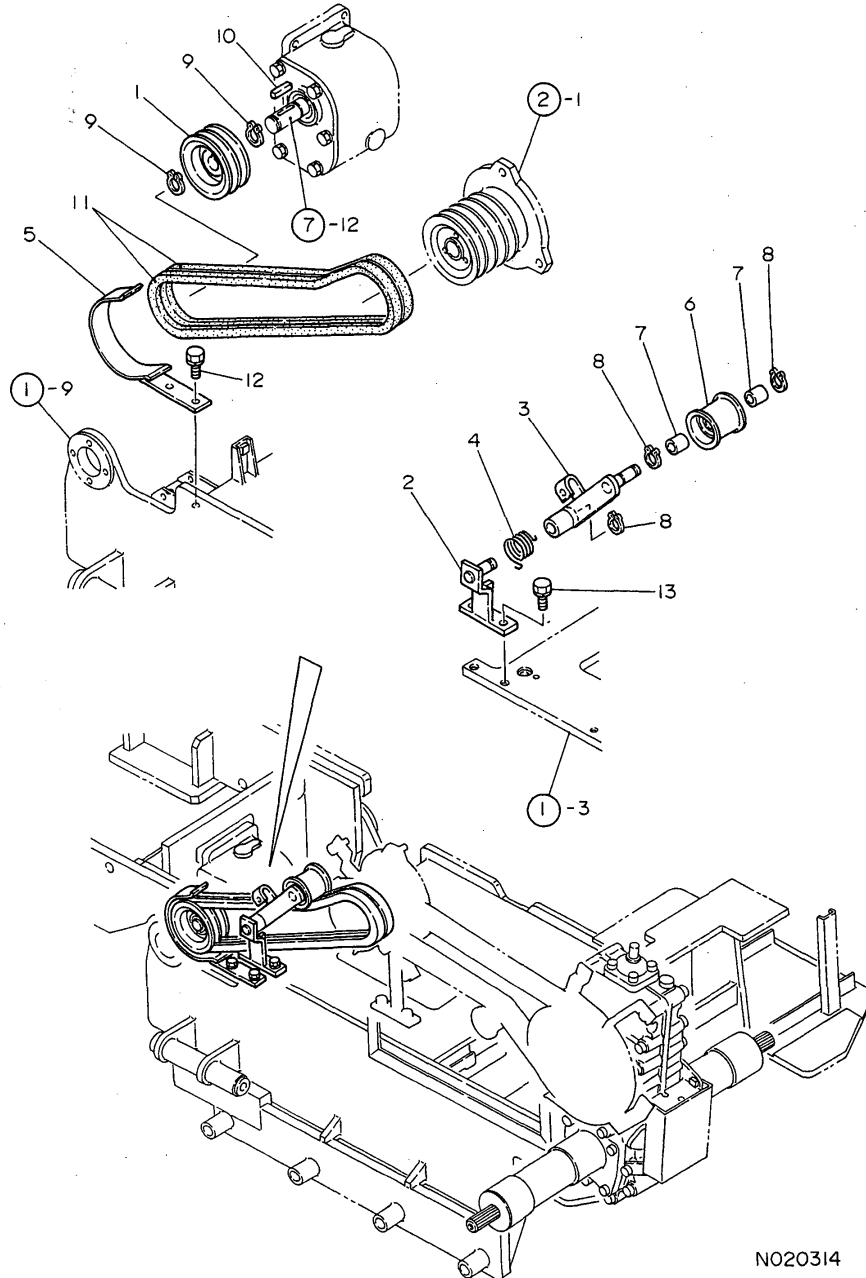
NPC-2204 7. ACCEL.SHAFT

(A)=YMD50 (D)=
(B)= (E)=
(C)= (F)=

REF.	LEV.	PARTS NO.	DESCRIPTION	QTY						I	R
				(A)	(B)	(C)	(D)	(E)	(F)		
1	1	1E3001-14010	CASE,SPEED-UP	1							
2	1	1E3001-14020	COVER,SPEED-UP CASE	1							
3	1	1E3001-14030	CASE PACKING	1							
4	1	1A1650-21080	BREATHER 1/8	1							
5	1	22217-080000	SPRING WASHER 8	6							
6	1	22217-100000	SPRING WASHER 10	4							
7	1	23871-030000	PLUG PT3/8,SCREW	2							
8	1	26116-080202	BOLT M 8X 20 PLATED	6							
I	8-1	1	26013-080202	BOLT W/WASHER M8X20	6						N
(A=FXXXXXX)											
9	1	26116-100402	BOLT M10X 40 PLATED	3							
10	1	26116-100502	BOLT M10X 50 PLATED	1							
11	1	26717-100002	NUT M10	1							
12	1	1E3001-14100	SHAFT,P.T.O.1ST	1							
13	1	1E3001-14110	GEAR 30	1							
14	1	1E3001-14120	COLLAR 27.6X34X30	2							
15	1	1E3001-14140	SHAFT,P.T.O.2ND	1							
16	1	1E3001-14150	GEAR 22	1							
17	1	1E3001-14160	COLLAR 31.1X38.1X26	1							
18	1	1E3001-14170	BEVEL 33L, SPIRAL	1							
19	1	1E3001-14180	BEVEL 33R, SPIRAL	1							
20	1	1E3001-14200	BRACKET,BEARING	1							
21	1	1E3001-14210	GEAR 21	1							
22	1	1E3000-14900	NEEDLE (S556720)	1							
23	1	1E3001-14900	OIL SEAL TC305011	1							
I	24	1	22217-080000	SPRING WASHER 8	4						Z
(A=FXXXXXX)											
25	1	22242-000300	CIRCLIP 30	2							
26	1	22242-000300	CIRCLIP 30	1							
27	1	22252-000620	CIRCLIP 62(H)	1							
27-1	1	22252-000621	CIRCLIP 62	1							N
(A=FXXXXXX)											
28	1	24101-062054	BEARING #6205	3							
29	1	24101-062064	BALL BEARING	1							
30	1	24101-062064	BALL BEARING	1							
31	1	24321-000800	O-RING 1A G-80.0	1							
32	1	24423-557209	SEAL TC557209	1							
33	1	26450-080302	BOLT M 8X 30	4							

Fig.8. P.T.O.DRIVE

8. P.T.O. DRIVE



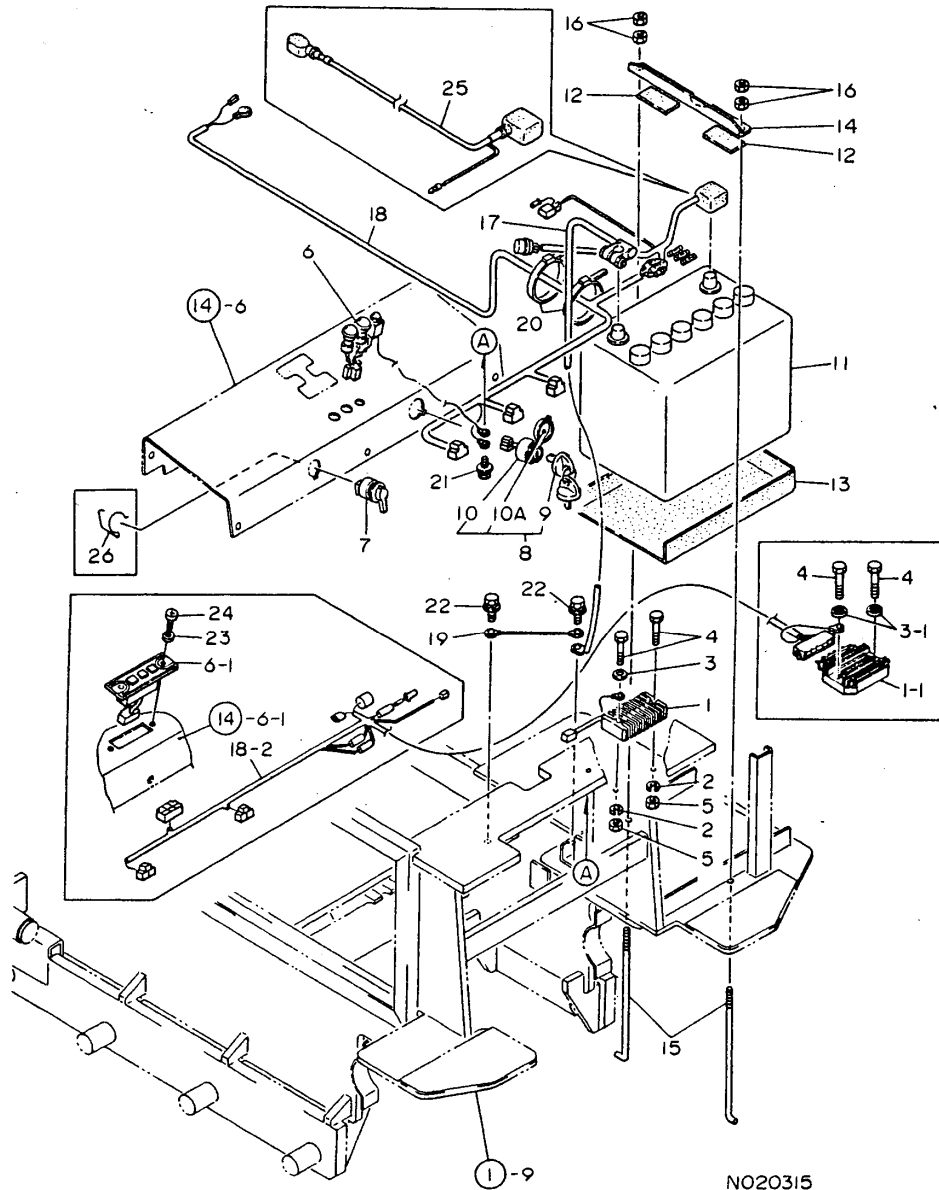
(A)=YMD50 (D)=
 (B)= (E)=
 (C)= (F)=

REF.	LEV.	PARTS NO.	DESCRIPTION	QTY						I	R
				(A)	(B)	(C)	(D)	(E)	(F)		
1	1	1E1030-11070	PULLEY 100B	1							
2	1	1E3001-15050	SEAT 1,TENSION	1							
3	1	1E3001-15100	ARM 1,TENSION	1							
4	1	1E3001-15150	SPRING R	1							
5	1	1E3001-15200	GUARD,P.T.O.BELT	1							
6	1	7E6150-51500	ROLLER, TENSION	1							
7	1	24550-015100	BUSH 15X10	2							
8	1	22242-000150	CIRCLIP 15	3							
9	1	22242-000250	CIRCLIP 25S	2							
10	1	22551-070350	KEY 7X35	1							
11	1	25123-004600	V-BELT	2							
12	1	26016-080162	BOLT M 8X 16	2							
12-1	1	26016-080164	BOLT M 8X 16	2							N
		(A=FXXXXXX)									
I 12-2	1	26018-080164	BOLT M 8X 16	2							N
		(A=FXXXXXX)									
13	1	26016-080202	BOLT M 8X 20	2							
13-1	1	26016-080204	BOLT M 8X 20	2							N
		(A=FXXXXXX)									
I 13-2	1	26018-080204	BOLT M 8X 20	2							N
		(A=FXXXXXX)									

N020314

Fig.9. ELECTRICAL PARTS

9. ELECTRICAL PARTS



NPC-2204 9. ELECTRICAL PARTS

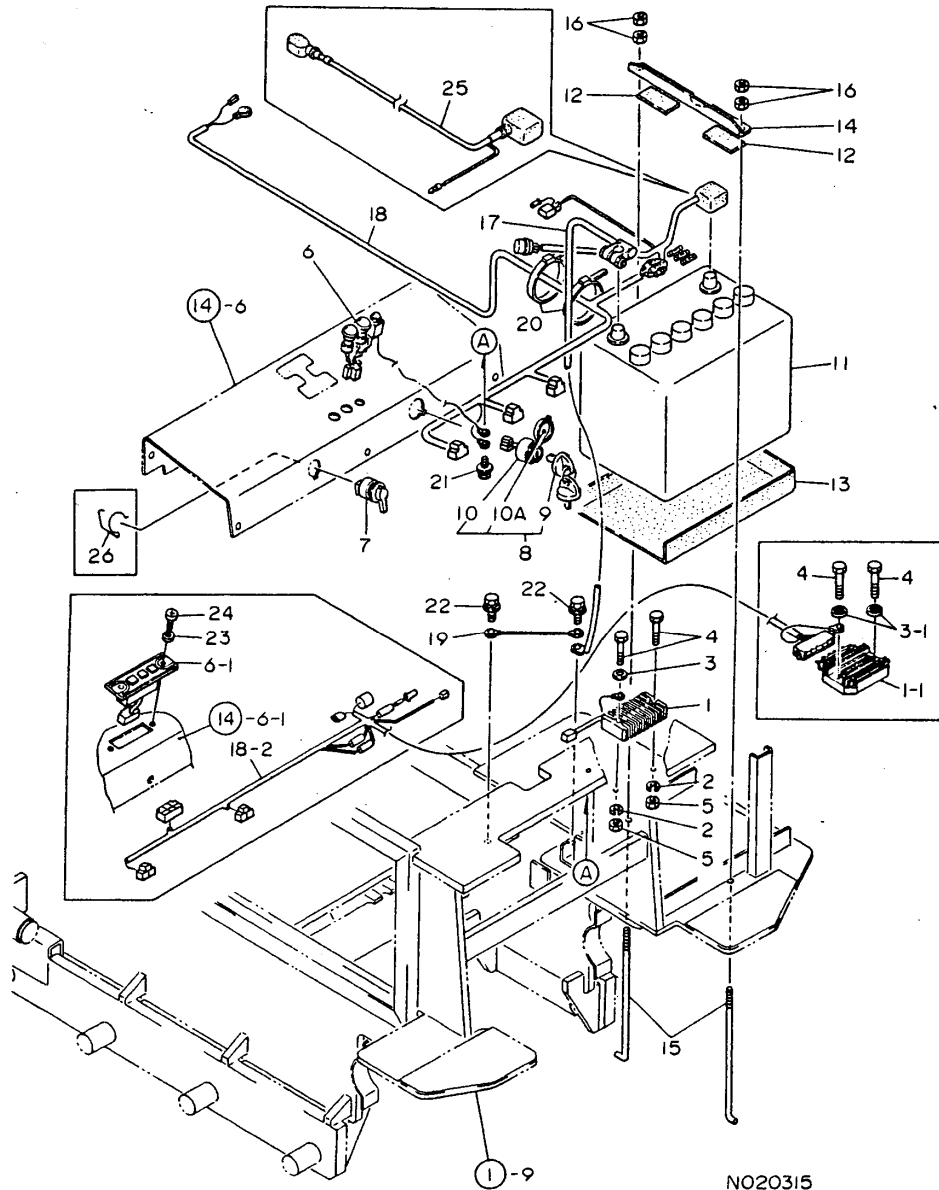
(A)=YMD50 (D)=
(B)= (E)=
(C)= (F)=

REF.	LEV.	PARTS NO.	DESCRIPTION	QTY						I	R
				(A)	(B)	(C)	(D)	(E)	(F)		
1	1	106383-77710	REGULATOR (RS1103)	1							
1-1	1	1E6550-05050 (A=FXXXXXX)	REGULATOR RS5114	1							S
I	2	1	22217-060000 (A=FXXXXXX)	SPRING WASHER 6	2						Z
3	1	22222-060000	SPRING WASHER 6	1							
3-1	1	22222-060000 (A=FXXXXXX)	SPRING WASHER 6	2							K
I	3-2	1	22222-060000 (A=FXXXXXX)	SPRING WASHER 6	1						Z
4	1	26117-060302	BOLT M 6X 30 PLATED	2							
I	4-1	1	26018-060204 (A=FXXXXXX)	BOLT M 6X 20	2						N
5	1	26716-060002	NUT M 6	2							
5-1	1	26717-060002 (A=FXXXXXX)	NUT M 6	2							N
I	5-2	1	26717-060002 (A=FXXXXXX)	NUT M 6	2						Z
6	1	1N1250-51250	LAMP COMP.,ALARM	1							
6-1	1	172730-55110 (A=FXXXXXX)	BOX, PILOT	1							S
7	1	7E6250-81350	SWITCH ASSY, FLASHER	1							
I	7-1	1	1A2020-83350 (A=F810171)	SWITCH ASSY, FLASHER	1						N
8	1	7E6320-81700	SWITCH ASSY,KEY	1							
I	8-1	1	1A2020-83100 (A=FXXXXXX)	SWITCH COMP.,KEY	1						N
9	2	1C6141-55520	KEY,WATERPROOF	2							
I	9-1	2	1A2020-83130 (A=FXXXXXX)	KEY,WATERPROOF	1						N
10	2	1E6320-81700	SWITCH, KEY	1							
I	10A	2	1A2020-83120 (A=FXXXXXX)	CAP,WATERPROOF	1						W
11	1	1N1251-51070	BATTERY NS70	1							
12	1	1E3000-67410	RUBBER A,HOSE RETAIN	2							
13	1	1E3001-81050	PLATE,RUBBER	1							
14	1	1E3001-81070	PLATE,BATTERY KEEP	1							
15	1	1E6320-81820	ROD, BATTERY CLAMP	2							
16	1	26716-060002	NUT M 6	4							
16-1	1	26717-060002 (A=FXXXXXX)	NUT M 6	4							N
17	1	1N1251-51090	CORD,BATTERY NEGATIV	1							
18	1	1E3001-81150	HARNESS COMP.,WIRE	1							
18-1	1	1E3001-81151 (A=FXXXXXX)	HARNESS COMP.,WIRE	1							N
18-2	1	1E3001-81152 (A=FXXXXXX)	HARNESS A	1							S
I	18-3	1	1E3001-81153 (A=F810171)	HARNESS A	1						N
19	1	1E3001-81170	HARNESS 250,WIRE	1							
20	1	1E6150-83910	BAND 195	2							
21-1	1	26018-060124 (A=FXXXXXX)	BOLT M 6X 12	1							N
22	1	26018-080162	BOLT M 8X 16	2							

++ CONTINUE ++

Fig.9. ELECTRICAL PARTS

9. ELECTRICAL PARTS



N020315

NPC-2204 9. ELECTRICAL PARTS

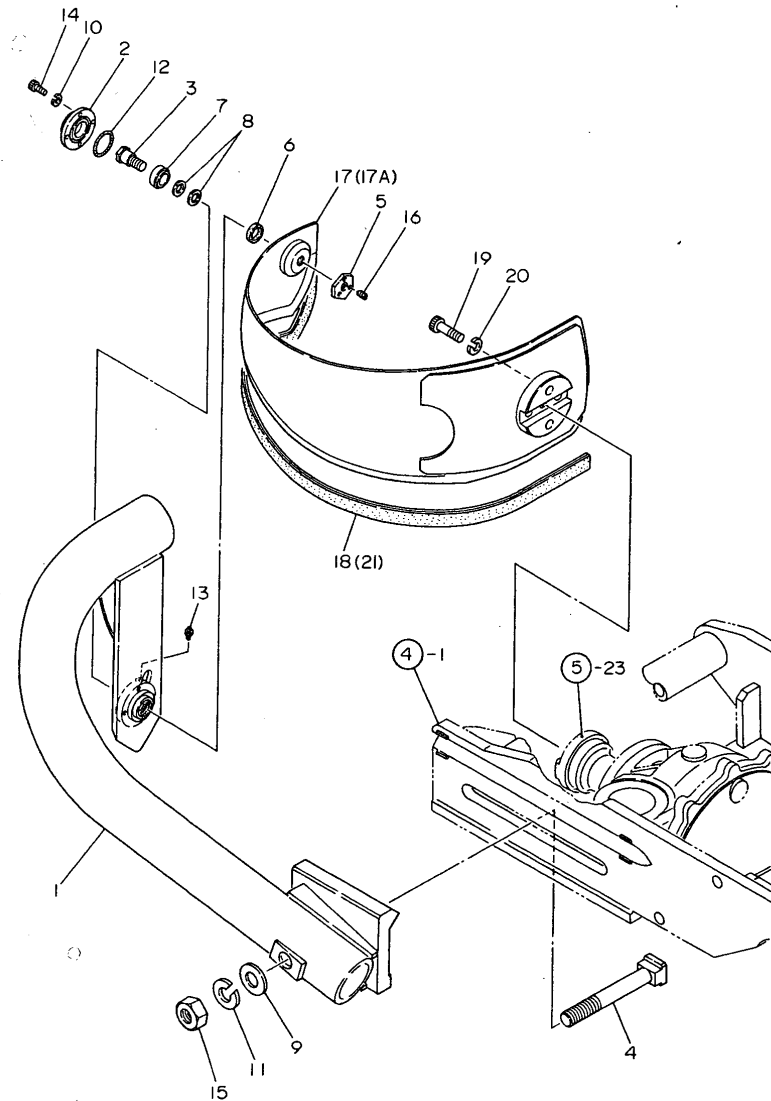
(A)=YMD50 (D)=
 (B)= (E)=
 (C)= (F)=

REF.	LEV.	PARTS NO.	DESCRIPTION	QTY						I	R
				(A)	(B)	(C)	(D)	(E)	(F)		
22-1	1	26018-080164 (A=FXXXXXX)	BOLT M 8X 16	2							N
23	1	22217-050000 (A=FXXXXXX)	SPRING WASHER 5	2							W
I 23-1	1	22217-050000 (A=FXXXXXX)	SPRING WASHER 5	2							Z
24	1	26557-050162 (A=FXXXXXX)	SCREW M 5X 16	2							W
I 24-1	1	26022-050122 (A=FXXXXXX)	SCREW M 5X 12	2							N
25	1	1E3001-81160 (A=FXXXXXX)	CABLE A,BATTERY	1							W
26	1	1E6480-81550 (A=FXXXXXX)	SPRING, RETAINER	1							W

Fig.10. BLADE

(A)=YMD50 (D)=
 (B)= (E)=
 (C)= (F)=

10. BLADE

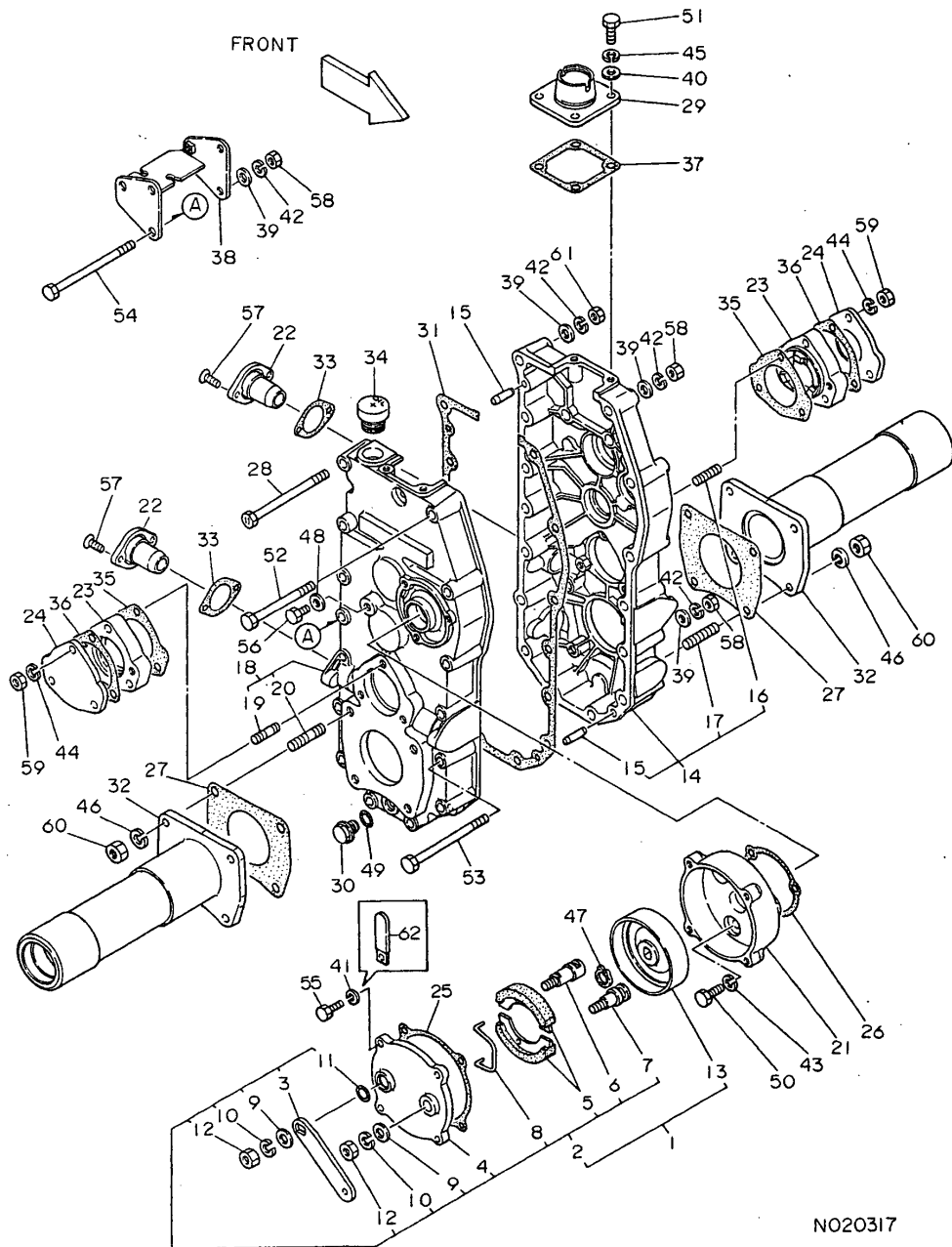


REF.	LEV.	PARTS NO.	DESCRIPTION	QTY						I	R
				(A)	(B)	(C)	(D)	(E)	(F)		
1	1	1E3001-21000	FRAME, BLADE	1							
2	1	1E3001-21200	CAP	1							
3-1	1	1E3001-21211	PIN 15, HINGE	1							N
(A=FXXXXXX)											
4	1	1E3000-21220	BOLT, CLAMPING	1							
5	1	1E3001-21220	NUT 15XP1	1							
6	1	1E3000-21230	PACKING 22.4	1							
7	1	1E3000-66980	SHFT SUPPORT	1							
8	1	1E4130-74010	LINER 15.2X24X1	2							
9	1	22137-240000	WASHER 24, POLISHED	1							
10	1	22217-060000	SPRING WASHER 6	4							
11	1	22217-240000	SPRING WASHER 24	1							
12	1	24321-000350	O-RING 1A G-35.0	1							
13	1	24761-010000	NIPPLE M6F, GREASE	1							
14	1	26450-060162	BOLT M 6X 16	4							
15	1	26737-240002	NUT M24	1							
16	1	26979-080082	SCREW M 8X 8	3							
I	17	1E3000-23150	BLADE ASY 500	1							1
I	17A	1E3001-23250	BLADE ASSY 600	1							1
I	17A-1	1E3001-23251	BLADE 600	1							N 1
(A=FXXXXXX)											
18	1	1E3001-23500	COVER 500, BLADE	1							
19	1	1E3000-23900	BOLT 12X45, HEX, SH.	4							
20	1	22217-120000	WASHER 12, SPRING	4							
21	1	1E3001-23530	COVER 600, BLADE	1							W
(A=FXXXXXX)											

Remarks
 (1) WHEN USING BLADE FOR YMD60, BLADE FRANGE 50 ASSY (7E3002-23500) IS REQUIRED TO FIX THEM TO YMD50 AND THIS BLADE FRANGE IS HANDLE AS OPTION.

Fig.11. TRANSMISSION CASE

11. TRANSMISSION CASE



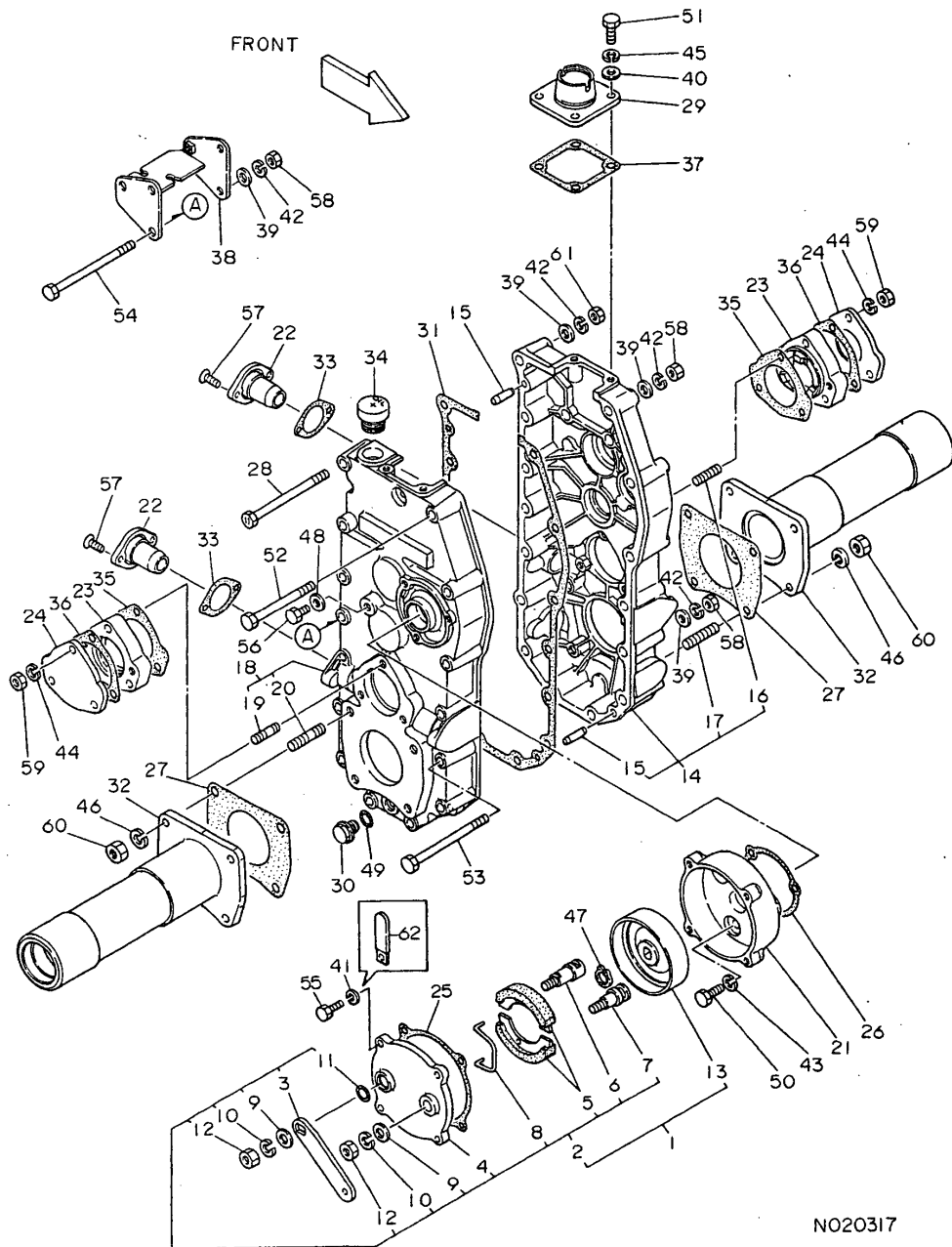
(A)=YMD50 (D)=
(B)= (E)=
(C)= (F)=

REF.	LEV.	PARTS NO.	DESCRIPTION	QTY						I	R
				(A)	(B)	(C)	(D)	(E)	(F)		
1	1	7N1070-20190	BRAKE COVER W/DRUM	1							
2	2	7N1070-20200	BRAKE COVER ASSY.	1							
3	3	1N1070-24811	ARM,BRAKE	1							
4	3	1E6140-52210	COVER,P BRAKE	1							
5	3	1E6140-52240	BRAKE SHOE, PARKING	2							
6	3	1E6140-52260	CAM SHAFT,PARK.BRAKE	1							
7	3	1E6140-52270	ANCHOR PIN, P.BRAKE	1							
8	3	1E6140-52280	RETURN SPRING,B.SHOE	1							
9	3	22137-100000	WASHER 10,POLISHED	2							
10	3	22217-100000	SPRING WASHER 10	2							
11	3	24311-000140	O-RING 1A P-14.0	1							
12	3	26717-100002	NUT M10	2							
13	2	1N1070-24750	BRAKE DRUM	1							
14	1	1N1070-24011	CASE R,TRANSMISSION	1							
I	14-1	1E3001-53200	CASE R,TRANSMISSION	1							N
(A=F810172)											
15	2	1A1040-26060	PIN 8X28, STRAIGHT	2							
16	2	26216-080352	STUD M 8X 35 PLATED	3							
17	2	26226-100302	STUD M10X 30 PLATED	4							
18	1	1N1070-24021	CASE L,TRANSMISSION	1							
I	18-1	1E3001-53150	CASE L,TRANSMISSION	1							N
(A=F810172)											
19	2	26216-080352	STUD M 8X 35 PLATED	3							
20	2	26226-100302	STUD M10X 30 PLATED	4							
21	1	1N1070-24300	CASE,BRAKE	1							
22	1	1N1070-24430	BRACKET,SIDE CLUTCH	2							
23	1	1N1070-24451	COVER,PAWL	2							
24	1	1N1070-24480	COVER,4TH SHFT.BRG.	2							
25	1	1N1070-24510	PACKING,BRAKE CAP	1							
26	1	1N1070-24520	PACKING,BRAKE CASE	1							
27	1	1N1070-24530	PACKING,AXLE CASE	2							
28	1	1N1070-24910	BOLT 8X110 11T	1							
29	1	1E4030-27350	RETAINER, LEVER	1							
30	1	1A1070-28690	PLUG 14, OIL	1							
31	1	1E6320-53030	PACKING, TRANSM.CASE	1							
32	1	1E3001-53040	CASE,AXLE	2							
33	1	1E6150-53141	PACKING,SIDE CLUTCH	2							
34	1	1E6071-53360	COVER 35,OILING	1							
35	1	1E6250-53740	PACKING COVER W/PAWL	2							
36	1	1E6320-53740	PACKING, COVER W/PAW	2							
37	1	1E6150-56030	PACKING, RETAINER	1							
38	1	1E3001-56350	BRACKET,SD.CLTCH.OUT	1							
39	1	22137-080000	WASHER 8, POLISHED	15							
40	1	22137-080000	WASHER 8, POLISHED	4							
41	1	22217-060000	SPRING WASHER 6	4							
42	1	22217-080000	SPRING WASHER 8	15							
43	1	22217-080000	SPRING WASHER 8	3							
44	1	22217-080000	SPRING WASHER 8	6							
45	1	22217-080000	SPRING WASHER 8	4							
46	1	22217-100000	SPRING WASHER 10	8							
47	1	22242-000160	CIRCLIP 16	1							
48	1	23414-080000	GASKET 8, ROUND	1							
49	1	24311-000160	O-RING 1A P-16.0	1							
50	1	26116-080202	BOLT M 8X 20 PLATED	3							

++ CONTINUE ++

Fig.11. TRANSMISSION CASE

11. TRANSMISSION CASE



N020317

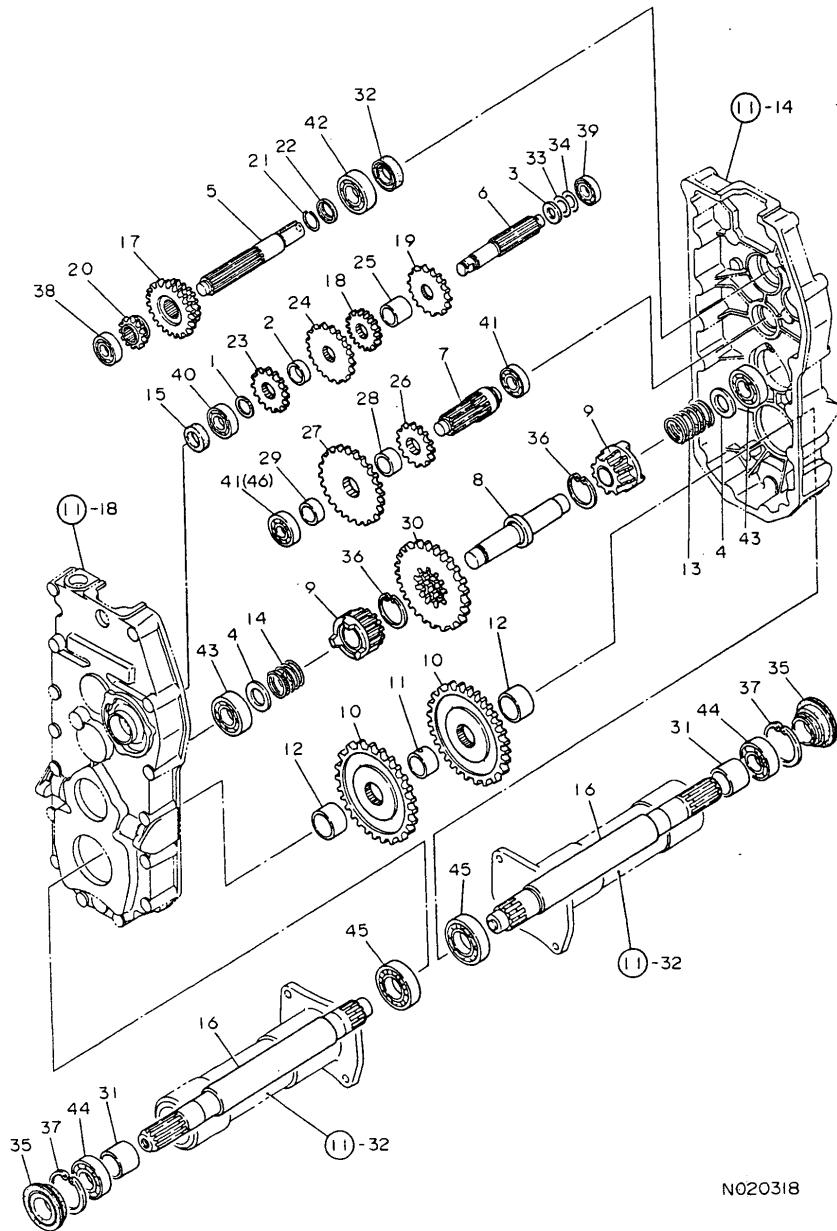
(A)=YMD50 (D)=
(B)= (E)=
(C)= (F)=

REF.	LEV.	PARTS NO.	DESCRIPTION	QTY						I	R
				(A)	(B)	(C)	(D)	(E)	(F)		
51	1	26116-080202	BOLT M 8X 20 PLATED	4							
52	1	26116-080902	BOLT M 8X 90 PLATED	1							
53	1	26116-081102	BOLT M 8X110 PLATED	9							
54	1	26116-081202	BOLT M 8X120 PLATED	4							
55	1	26117-060202	BOLT M 6X 20 PLATED	4							
56	1	26117-080162	BOLT M 8X 16 PLATED	1							
57	1	26577-060162	SCREW M 6X 16	4							
58	1	26717-080002	NUT M 8	14							
59	1	26717-080002	NUT M 8	6							
60	1	26717-100002	NUT M10	8							
61	1	26756-080002	LOCK NUT M 8 PLATED	1							
62	1	1E6020-83890	CLIP	1							W

(A=FXXXXXX)

Fig.12. TRANSMISSION INTERIOR

12. TRANSMISSION, INTERIOR



N020318

NPC-2204 12. TRANSMISSION INTERIOR

(A)=YMD50 (D)=
(B)= (E)=
(C)= (F)=

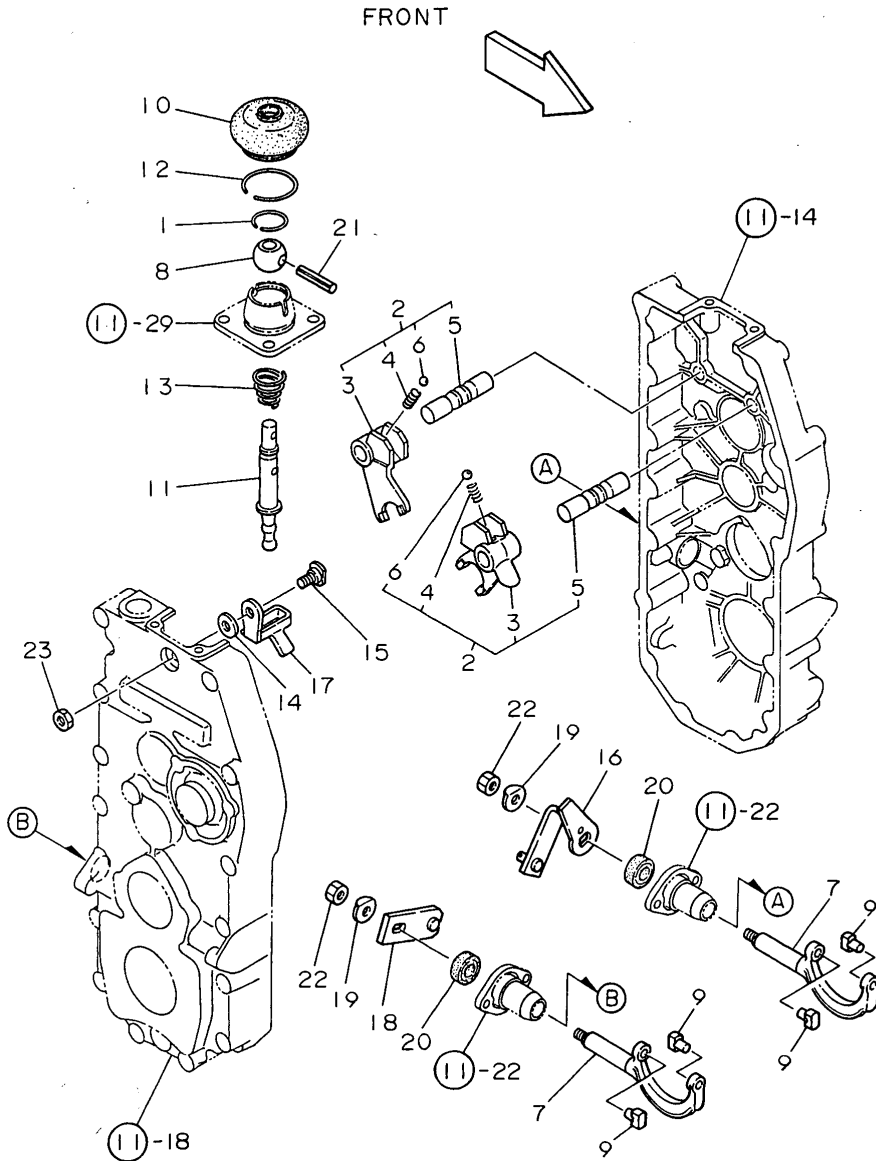
REF.	LEV.	PARTS NO.	DESCRIPTION	QTY						I	R
				(A)	(B)	(C)	(D)	(E)	(F)		
1	1	1E4070-14040	LINER 17.1X25X1	1							
2	1	1E4030-24040	COLLAR,MAIN SHAFT	1							
3	1	1E4030-24150	LINER 15	1							
4	1	192010-24160	LINER 20	2							
5	1	1N1070-25010	SHAFT,MAIN	1							
6	1	1N1070-25020	SHAFT,2ND	1							
7	1	1N1070-25031	SHAFT,3RD	1							
8	1	1N1070-25041	SHAFT,4TH	1							
9	1	1N1070-25181	RATCHET 14,4TH SHAFT	2							
10	1	1N1070-25210	GEAR 41,AXLE	2							
11	1	1N1070-25350	COLLAR 25.5X34X25	1							
12	1	1N1070-25360	COLLAR 31.1X38.1X24	2							
13	1	1N1070-25450	SPRING L	1							
14	1	1N1070-25460	SPRING R	1							
15	1	1A1120-28130	OIL SEAL TC17328	1							
16	1	1E3001-53060	AXLE	2							
17	1	1E3001-53070	GEAR 21-28,SLIDE	1							
18	1	1E3001-53080	GEAR 14,2ND SHAFT	1							
19	1	1E3001-53090	GEAR 21,2ND SHAFT	1							
20	1	1E6070-54030	GEAR 15,MN.SHFT.SLD.	1							
21	1	1E6070-54060	CIRCLIP 20	1							
22	1	1E6070-54070	RETAINER,CIRCLIP	1							
23	1	1E6070-54091	GEAR 20, 2ND SHAFT	1							
24	1	1E6070-54110	GEAR 28, 2ND SHAFT	1							
25	1	1E6070-54140	COLLAR 22.6X27.2X25	1							
26	1	1E6150-54210	GEAR 14, 3RD SHAFT	1							
27	1	1E6071-54220	GEAR 36, 3RD SHAFT	1							
28	1	1E6070-54230	COLLAR 25.5X30X14	1							
29	1	1E6070-54240	COLLAR 18.2X28X8	1							
30	1	1E6150-54370	GEAR 35, 4TH SHAFT	1							
31	1	1E6070-54410	COLLAR	2							
32	1	1A1031-28190	OIL SEAL TC20407	1							
32-1	1	1E6070-54460	OIL SEAL TC20407	1							N
(A=FXXXXXX)											
33	1	1E6070-54610	SHIM 17.5X25X0.3	1							
34	1	1E6070-54610	SHIM 17.5X25X0.3	1							
35	1	1E6140-73420	SEAL QLF255218, OIL	2							
36	1	22252-000420	CIRCLIP 42	2							
36-1	1	22252-000421	CIRCLIP 42	2							N
(A=FXXXXXX)											
37	1	22252-000520	CIRCLIP 52	2							
37-1	1	22252-000521	CIRCLIP 52	2							N
(A=FXXXXXX)											
38	1	24101-062024	BALL BEARING	1							
39	1	24101-062024	BALL BEARING	1							
40	1	24101-062034	BALL BEARING	1							
41	1	24101-062034	BALL BEARING	2							
I	41-1	24101-062034	BALL BEARING	1							K
(A=F810172)											
42	1	24101-062044	BALL BEARING	1							
43	1	24101-062044	BALL BEARING	2							
44	1	24101-062054	BEARING #6205	2							
45	1	24101-062064	BALL BEARING	2							
I	46	24101-063034	BALL BEARING	1							W

++ CONTINUE ++

Fig.13. CHANGE

(A)=YMD50 (D)=
 (B)= (E)=
 (C)= (F)=

13. CHANGE

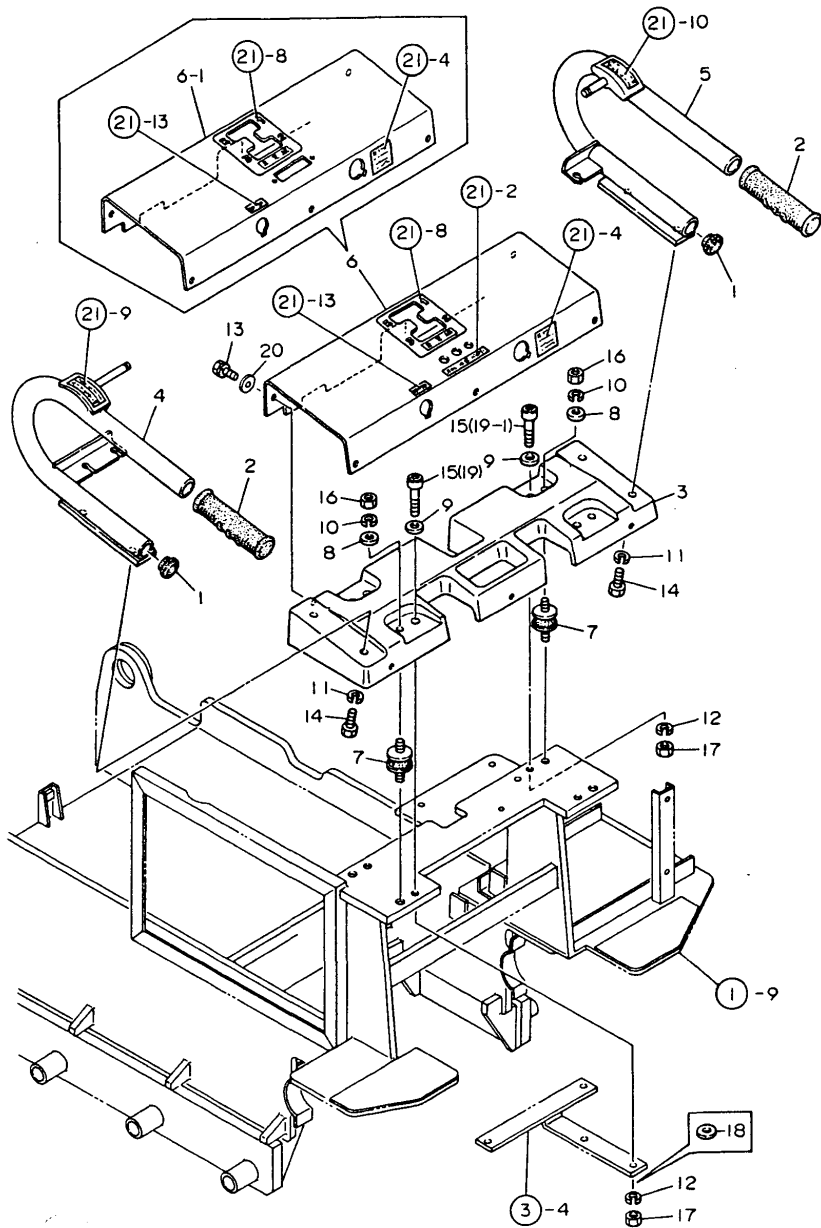


N020319

REF.	LEV.	PARTS NO.	DESCRIPTION	QTY						I	R
				(A)	(B)	(C)	(D)	(E)	(F)		
1	1	1A1040-26320	CIRCLIP 30-H	1							
2	1	7N1070-26410	CHANGE FORK ASSY.	2							
3	2	1N1070-26410	FORK,CHANGE	2							
4	2	1A1040-26750	SPRING, FORK	2							
5	2	1E6150-56010	SHAFT,FORK	2							
6	2	24190-100001	BALL 5/16, STEEL	2							
7	1	1N1070-26450	BODY,SD.CLUTCH FORK	2							
7-1	1	1N1070-26451	BODY,SD.CLUTCH FORK	2							N
(A=FXXXXXX)											
8	1	1E4030-27340	BALL, CHANGE SHIFTER	1							
9	1	1A1040-27720	ROLLER,RO.SHIFTER	4							
10	1	1A1040-28180	COVER, RUBBER	1							
11	1	1E6320-56010	ROD,MAIN CHANGE	1							
12	1	1E6090-56040	CLIP	1							
13	1	1E6090-56060	SPRING,MN.CHG.SHIFTR	1							
14	1	1E6090-56070	WASHER 8.3X22X1	1							
15	1	1E6090-56080	PIN,ROD STOP	1							
16	1	1E3001-56100	ARM L,SIDE CLUTCH	1							
17	1	1E6090-56100	STOPPER,MN.CHG.ROD	1							
18	1	1E3001-56130	ARM R,SIDE CLUTCH	1							
18-1	1	1E3001-56131	ARM R,SIDE CLUTCH	1							N
(A=FXXXXXX)											
19	1	1E6070-56290	WASHER 8	2							
20	1	1E6090-56420	SEAL TC14284,OIL	2							
21	1	1E4030-99330	CASTLE PIN F 5X40	1							
22	1	26717-080002	NUT M 8	2							
23	1	26757-080002	LOCK NUT M 8 PLATED	1							

Fig.14. HANDLE

14. HANDLE



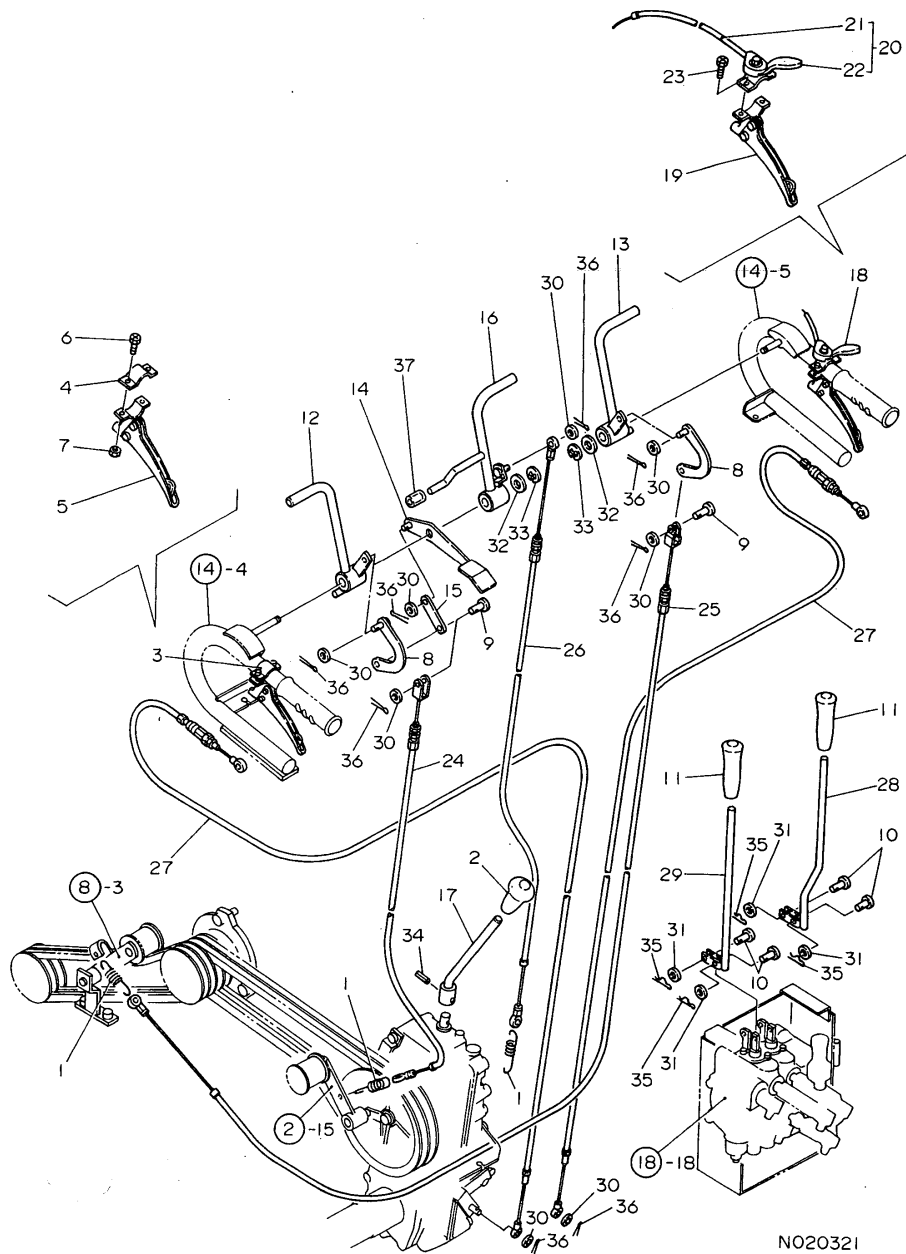
N020320

(A)=YMD50 (D)=
(B)= (E)=
(C)= (F)=

REF.	LEV.	PARTS NO.	DESCRIPTION	QTY						I	R
				(A)	(B)	(C)	(D)	(E)	(F)		
1	1	1A1140-51410	CAP, HANDLE	2							
2	1	1A1040-58170	GRIP, HANDLE	2							
3	1	1E3001-61010	COLUMN,HANDLE	1							
4	1	1E3001-61050	HANDLE L	1							
5	1	1E3001-61120	HANDLE R	1							
6	1	1E3001-61200	COVER,CHANGE	1							
6-1	1	1E3001-61190	COVER,CHANGE	1							S
(A=FXXXXXX)											
7	1	1E3001-61900	RUBBER KA30,VIBR.PRF	4							
I 8	1	22137-080000	WASHER 8, POLISHED	4							Z
(A=FXXXXXX)											
9	1	22137-120000	WASHER 12,POLISHED	4							
I 10	1	22217-080000	SPRING WASHER 8	4							Z
(A=FXXXXXX)											
11	1	22217-100000	SPRING WASHER 10	4							
12	1	22217-120000	WASHER 12,SPRING	4							
13	1	26016-060162	BOLT M 6X 16	5							
13-1	1	26016-060164	BOLT 6X16 W/L.W.	5							N
(A=FXXXXXX)											
14	1	26117-100302	BOLT M10X 30	4							
14-1	1	26117-100402	BOLT 10X40	4							N
(A=FXXXXXX)											
15	1	26450-120502	BOLT M12X 50	4							
15-1	1	26450-120502	BOLT M12X 50	2							K
(A=FXXXXXX)											
I 15-2	1	26450-120502	BOLT M12X 50	2							Z
(A=FXXXXXX)											
16	1	26717-080002	NUT M 8	4							
I 16-1	1	26367-080002	U-NUT M 8	4							N
(A=FXXXXXX)											
17	1	26716-120002	NUT M12	4							
17-1	1	26717-120002	NUT M12	4							N
(A=FXXXXXX)											
18	1	22137-120000	WASHER 12,POLISHED	2							W
(A=FXXXXXX)											
19	1	26450-120602	BOLT M12X 60	2							W
(A=FXXXXXX)											
I 19-1	1	26450-120602	BOLT M12X 60	4							K
(A=FXXXXXX)											
I 20	1	1E4030-99230	WASHER 6X16X1	5							

Fig.15. CONTROL

15. CONTROL



NO20321

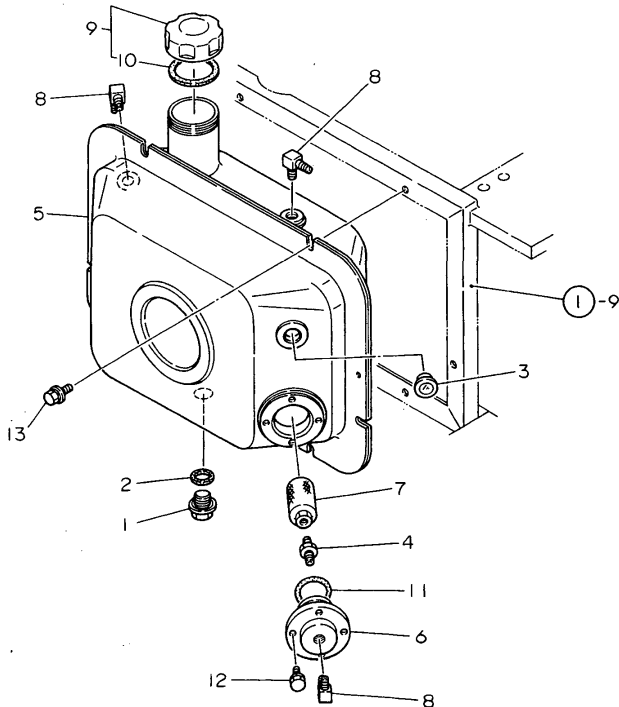
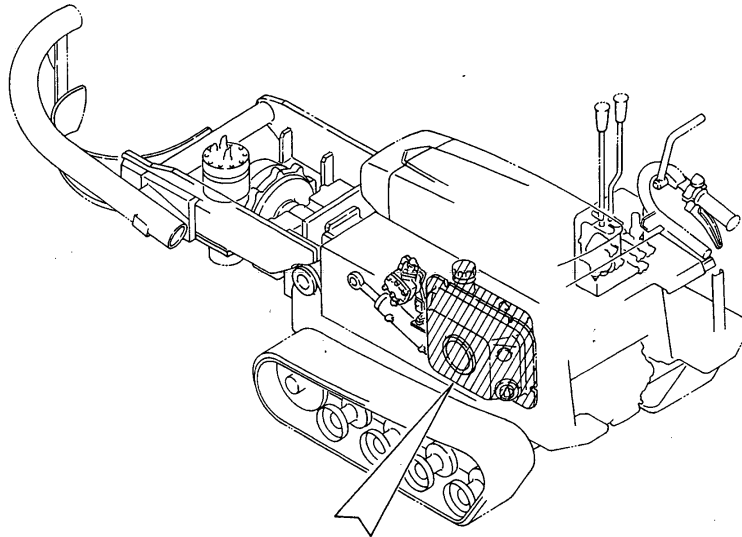
15. CONTROL

(A)=YMD50 (D)=
(B)= (E)=
(C)= (F)=

REF.	LEV.	PARTS NO.	DESCRIPTION	QTY						I	R
				(A)	(B)	(C)	(D)	(E)	(F)		
1	1	1E4060-16050	SPRING,CLUTCH	3							
2	1	1E4060-26430	GRIP	1							
3	1	7A1040-50720	SD.CLTCH.LEVER L ASS	1							
4	2	1A1040-57390	BAND,CLAMPING	1							
5	2	7A1040-50760	SD.CLUTCH LVR,L.SASS	1							
6	2	26117-060309	BOLT M 6X 30 PLATED	2							
7	2	26756-060002	LOCK NUT M 6 PLATED	2							
8	1	1A1380-55660	JOINT, LEVER	2							
9	1	1A1040-56900	PIN 6X 17	2							
10	1	1A1040-56900	PIN 6X 17	4							
11	1	1A1120-57980	GRIP	2							
12	1	1E3001-63010	LEVER,MAIN CLUTCH	1							
13	1	1E3001-63050	LEVER,VIBRATOR	1							
14	1	1E3001-63100	LEVER,PUSH	1							
15	1	1E3001-63130	LINK,LEVER	1							
16	1	1E3001-63150	LEVER,PARKING	1							
17	1	1E3001-63200	LEVER,MAIN CHANGE	1							
18	1	1E3001-63250	LEVER R CMP,SD.CLTCH	1							
19	2	7A1040-50750	SD.CLTCH.LEVER R ASS	1							
20	2	1E3001-63260	LEVER CMP,ACCELERAT.	1							
21	3	1E4351-50180	WIRE, ACCELERATOR	1							
22	3	1A1040-57400	LEVER, THROTTLE	1							
23	2	26117-060252	BOLT M 6X 25 PLATED	2							
24	1	1E3001-63300	MAIN CLUTCH WIRE	1							
24-1	1	1E3001-63301	WIRE,MAIN CLUTCH	1							N
(A=FXXXXXX)											
25	1	1E3001-63310	VIVELATOR WIRE	1							
25-1	1	1E3001-63311	WIRE,VIBRATOR	1							N
(A=FXXXXXX)											
26	1	1E3001-63320	PARKING BRAKE WIRE	1							
26-1	1	1E3001-63321	WIRE,PARKING BRAKE	1							N
(A=FXXXXXX)											
27	1	1E3001-63340	WIRE,SIDE CLUTCH	2							
28	1	1E3001-63400	CONTROLL LEVER	1							
29	1	1E3001-63440	LEVER 2,CONTROL	1							
30	1	22137-060000	WASHER 6, POLISHED	8							
31	1	22137-060000	WASHER 6, POLISHED	4							
32	1	22137-130000	WASHER 13	2							
33	1	22272-000100	CIRCLIP E-10	2							
34	1	22351-050025	SPRING PIN 5X25	1							
35	1	22360-060000	SNAP PIN 6	4							
36	1	22417-200160	COTTER PIN 2.0X16	8							
37	1	23061-100020	PIPE 10X20,VINYL	1							

Fig.16. OIL TANK

16. OIL TANK



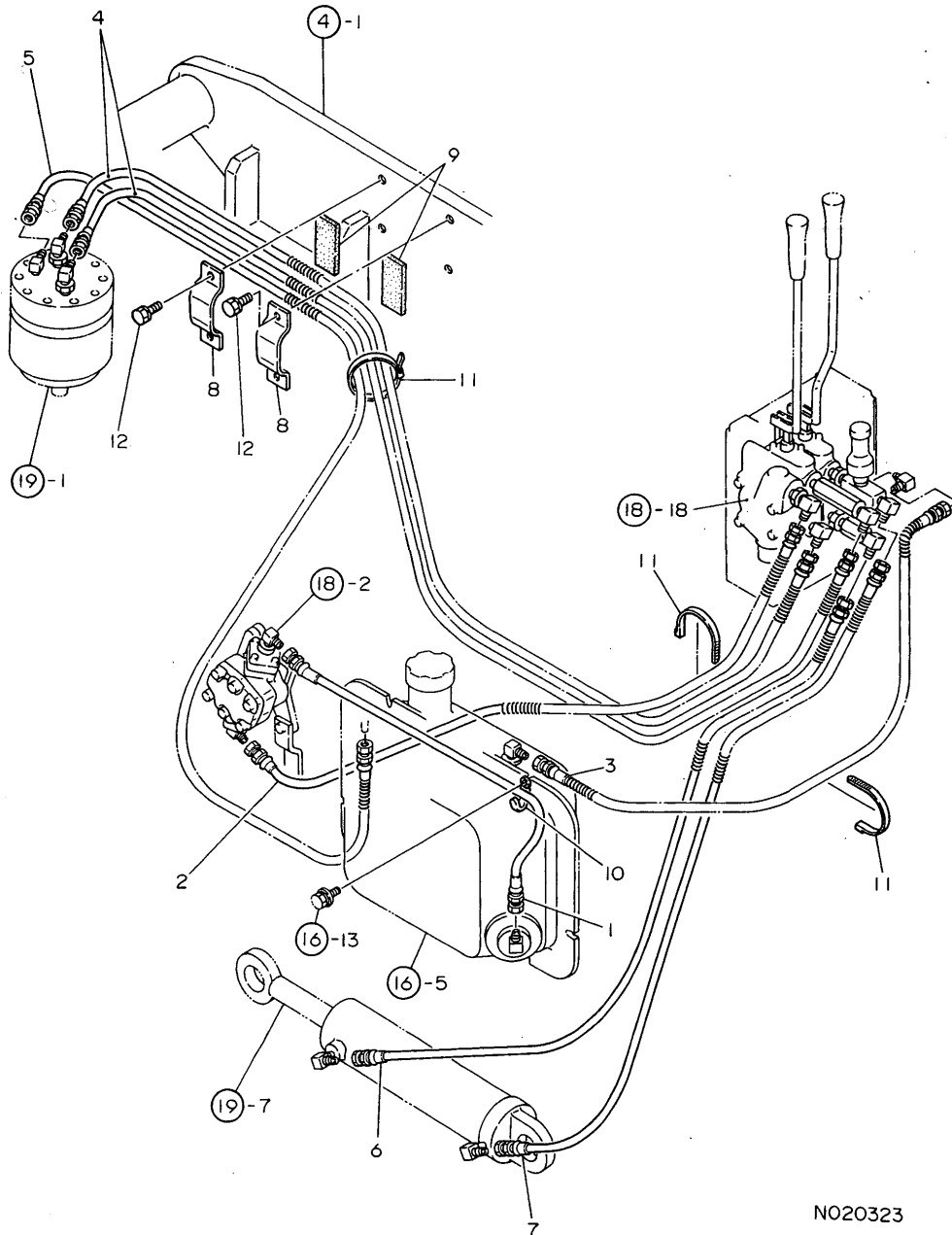
NO20322

(A)=YMD50 (D)=
(B)= (E)=
(C)= (F)=

REF.	LEV.	PARTS NO.	DESCRIPTION	QTY						I	R
				(A)	(B)	(C)	(D)	(E)	(F)		
1	1	1E6460-03200	PLUG 16, DRAIN	1							
2	1	1E6460-03210	PACKING 16	1							
3	1	1A1070-28210	WINDOW 20,OIL CHECK	1							
4	1	1E3000-66900	NIPPLE PT1/4	1							
5	1	1E3001-66010	TANK,HYDRAULIC OIL	1							
6	1	1E3001-66130	SOCKET	1							
7	1	1E3000-66910	SUCTION STRAINER	1							
8	1	1E6030-67030	ELBOW 90	3							
9	1	7E6251-77320	CAP ASSY, FUEL	1							
10	2	1A1120-61541	SEAL,RUBBER	1							
11	1	24321-000350	O-RING 1A G-35.0	1							
12	1	26016-060162	BOLT M 6X 16	4							
12-1	1	26016-060164	BOLT 6X16 W/L.W.	4							N
		(A=FXXXXXX)									
13	1	26018-080162	BOLT M 8X 16	6							
13-1	1	26018-080164	BOLT M 8X 16	6							N
		(A=FXXXXXX)									

Fig.17. PIPING

17. PIPING



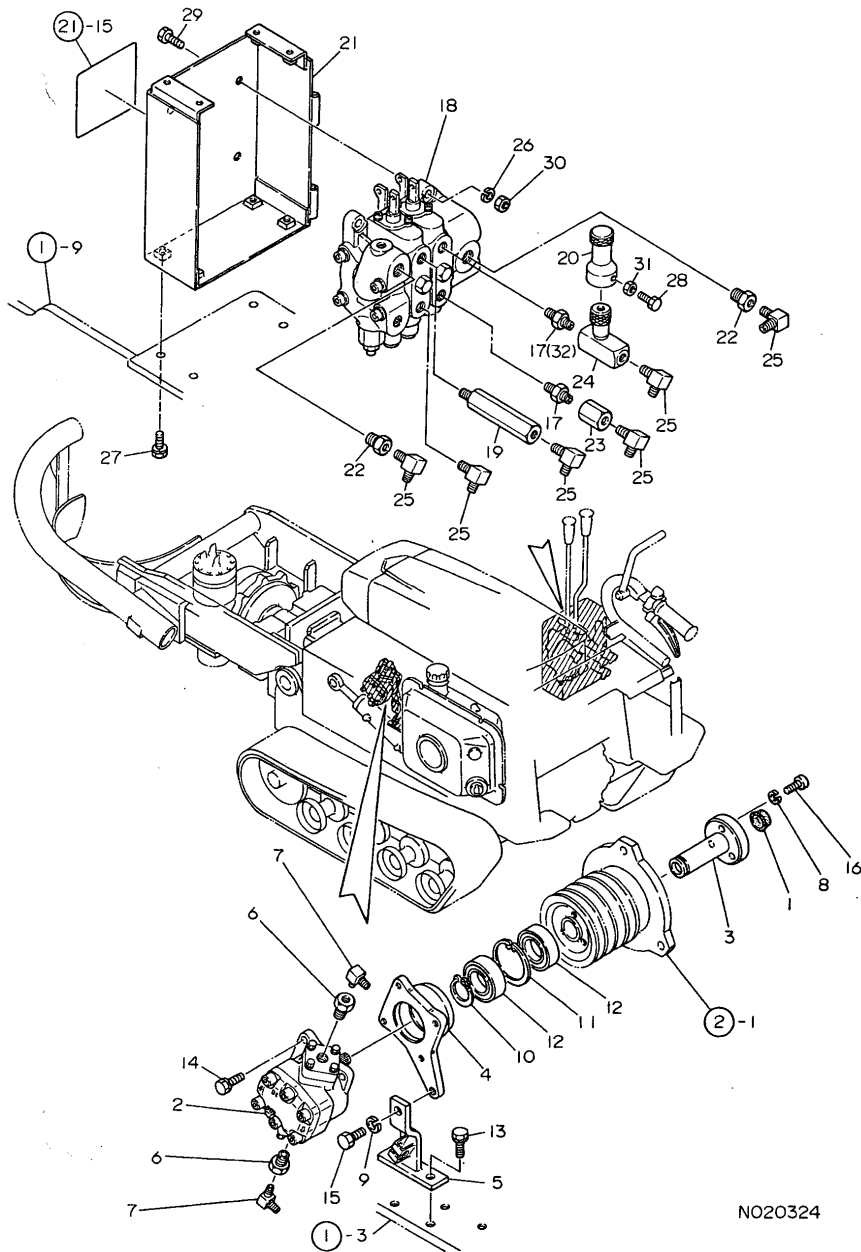
N020323

(A)=YMD50 (D)=
 (B)= (E)=
 (C)= (F)=

REF.	LEV.	PARTS NO.	DESCRIPTION	QTY						I	R
				(A)	(B)	(C)	(D)	(E)	(F)		
1	1	1E3001-67010	HOSE P-T, HYDRAULIC	1							
2	1	1E3001-67020	HOSE C-P, HYDRAULIC	1							
3	1	1E3001-67030	HOSE C-T, HYDRAULIC	1							
4	1	1E3001-67040	HOSE C-M, HYDRAULIC	2							
I	4-1	1E3001-67041	HOSE C-M, HYDRAULIC	2							Q
(A=F810283)											
5	1	1E3001-67050	HOSE M-T, HYDRAULIC	1							
I	5-1	1E3001-67051	HOSE M-T, HYDRAULIC	1							Q
(A=F810283)											
6	1	1E3001-67060	HOSE C-SF, HYDRAULIC	1							
7	1	1E3001-67070	HOSE C-SR, HYDRAULIC	1							
8	1	1E3000-67400	CLAMP, HOSE	2							
9	1	1E3000-67410	RUBBER A, HOSE RETAIN	2							
10	1	1E6020-83890	CLIP	1							
11	1	1E6102-84970	BAND 140, WIRE LOCK	3							
12	1	26016-060124	BOLT 6X12 W/L.W.	4							

Fig.18. HYDRAULIC PUMP

18. HYDRAULIC PUMP



NO20324

18. HYDRAULIC PUMP

(A)=YMD50 (D)=
(B)= (E)=
(C)= (F)=

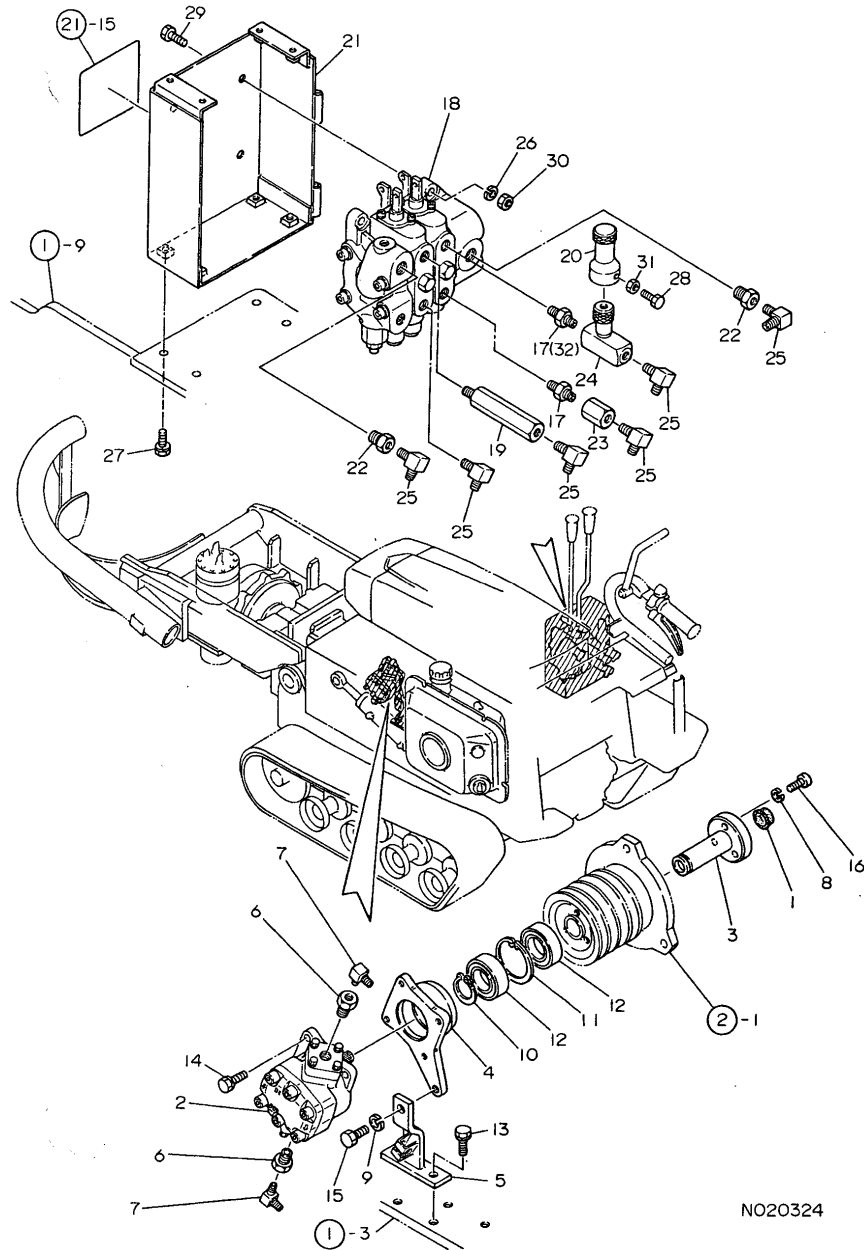
REF.	LEV.	PARTS NO.	DESCRIPTION	QTY						I	R
				(A)	(B)	(C)	(D)	(E)	(F)		
1	1	1NE050-43760	CAP 20X8	1							
2	1	1E3001-66160	PUMP GP-OB-2,GEAR	1							
3	1	1E3001-66170	SHAFT,PUMP MOUNTING	1							
4	1	1E3001-66180	FLANGE,PUMP MTG.	1							
5	1	1E3001-66210	SEAT,FLANGE	1							
6	1	1E3000-66950	BUSHING 1/2X1/4	2							
7	1	1E6030-67030	ELBOW 90	2							
8	1	22217-080000	SPRING WASHER 8	3							
9	1	22217-100000	SPRING WASHER 10	1							
10	1	22242-000250	CIRCLIP 25S	1							
11	1	22252-000520	CIRCLIP 52	1							
11-1	1	22252-000521	CIRCLIP 52	1							N
(A=FXXXXXX)											
12	1	24104-062054	BALL BEARING	2							
13	1	26016-080162	BOLT M 8X 16	2							
13-1	1	26016-080164	BOLT M 8X 16	2							N
(A=FXXXXXX)											
I 13-2	1	26018-080204	BOLT M 8X 20	2							N
(A=FXXXXXX)											
14	1	26016-080202	BOLT M 8X 20	4							
14-1	1	26016-080204	BOLT M 8X 20	4							N
(A=FXXXXXX)											
I 14-2	1	26013-080202	BOLT W/WASHER M8X20	4							N
(A=FXXXXXX)											
15	1	26116-100202	BOLT M10X 20 PLATED	1							
16	1	26450-080302	BOLT M 8X 30	3							
17	1	1E3000-66900	NIPPLE PT1/4	2							
17-1	1	1E3000-66900	NIPPLE PT1/4	1							K
(A=FXXXXXX)											
18	1	1E3001-66300	VALVE,CONTROL	1							
19	1	1E3001-66350	CONNECTOR PT1/4	1							
20-2	1	1E3001-66402	GRIP,STOP VALVE	1							N
(A=FXXXXXX)											
21	1	1E3001-66420	SEAT,VALVE MOUNTING	1							
22	1	1E3000-66960	BUSING 3/8 X 1/4	2							
22-1	1	1E3001-66960	BUSHING 3/8X1/4	2							N
(A=FXXXXXX)											
23	1	1E3000-66960	BUSING 3/8 X 1/4	1							
24	1	1E3000-66970	CONTORL,FLOW	1							
25	1	1E6030-67030	ELBOW 90	6							
I 26	1	22217-080000	SPRING WASHER 8	3							Z
(A=FXXXXXX)											
27	1	26016-080202	BOLT M 8X 20	4							
27-1	1	26016-080204	BOLT M 8X 20	4							N
(A=FXXXXXX)											
I 27-2	1	26018-080204	BOLT M 8X 20	4							N
(A=FXXXXXX)											
28	1	26117-060162	BOLT M 6X 16 PLATED	1							
29	1	26117-080302	BOLT M 8X 30	3							
30	1	26717-080002	NUT M 8	3							
I 30-1	1	26367-080002	U-NUT M 8	3							N
(A=FXXXXXX)											
31	1	26756-060002	LOCK NUT M 6 PLATED	1							
31-1	1	26757-060002	LOCK NUT M 6 PLATED	1							N

++ CONTINUE ++

Fig.18. HYDRAULIC PUMP

18. HYDRAULIC PUMP

(A)=YMD50 (D)=
 (B)= (E)=
 (C)= (F)=

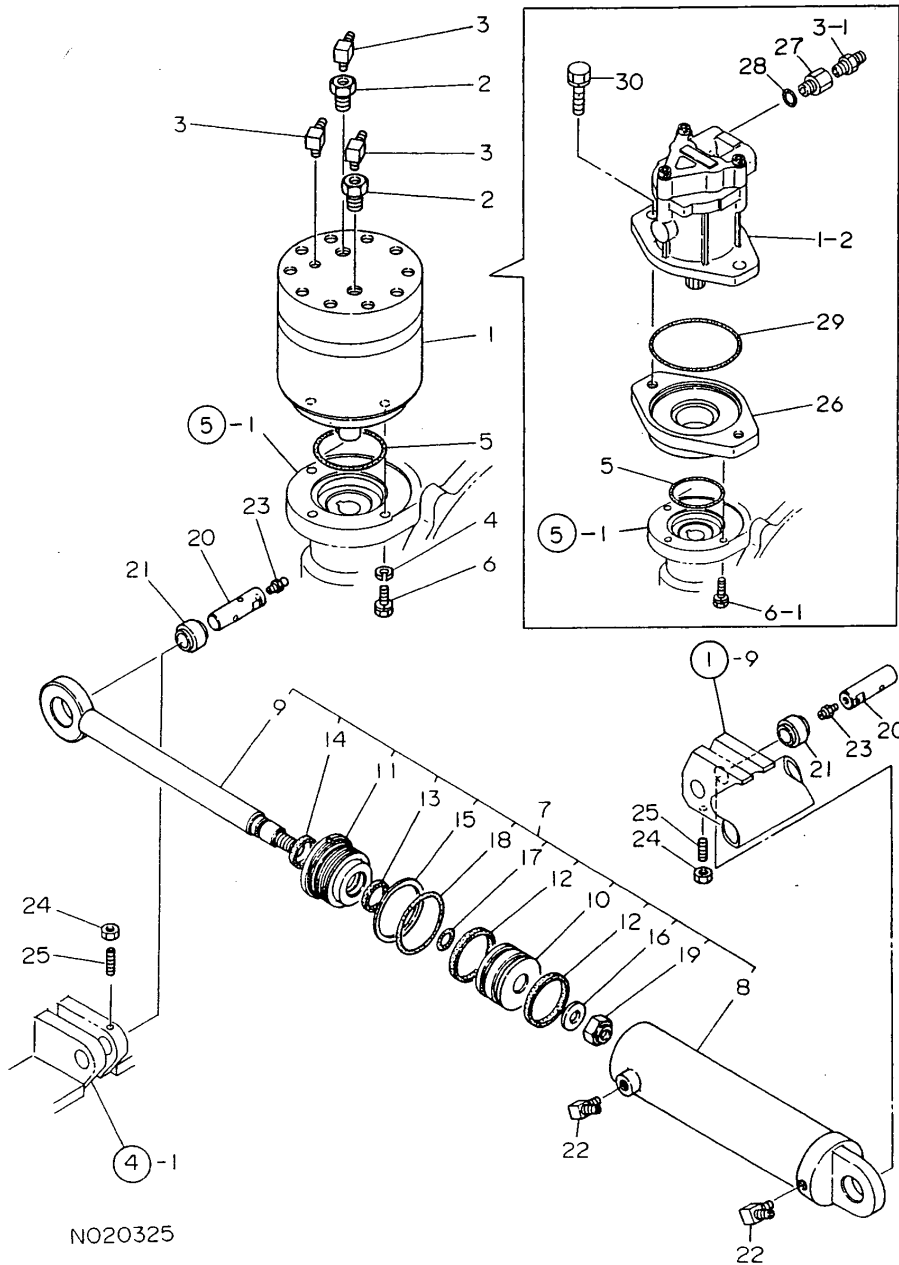


N020324

REF.	LEV.	PARTS NO.	DESCRIPTION	QTY						I	R	
				(A)	(B)	(C)	(D)	(E)	(F)			
I	31-2	1	26717-060002		1						N	
			(A=FXXXXXX)									
	32	1	1E3001-66380		1						W	
			(A=FXXXXXX)									

Fig.19. OIL MOTOR

19. OIL MOTOR



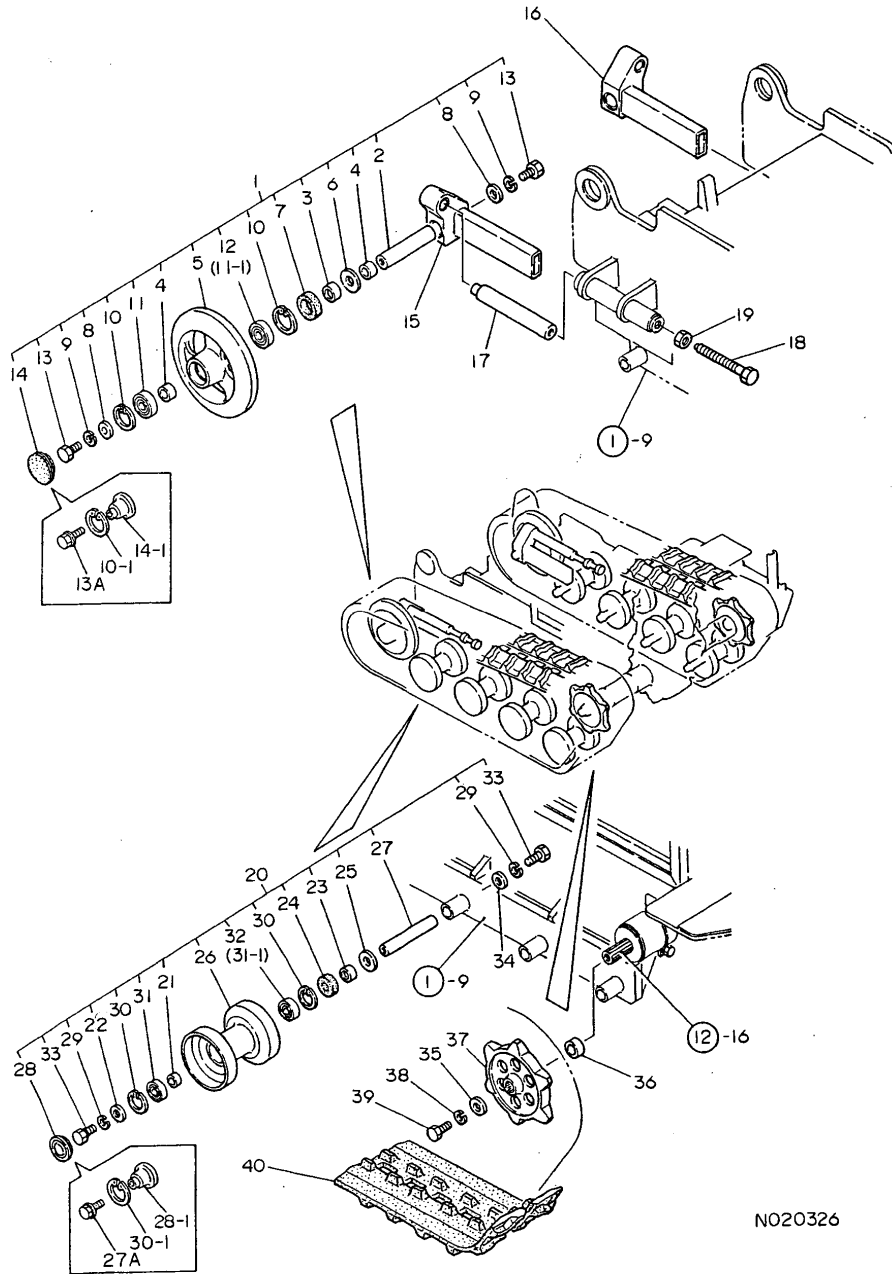
NO20325

(A)=YMD50 (D)=
(B)= (E)=
(C)= (F)=

REF.	LEV.	PARTS NO.	DESCRIPTION	QTY						I	R
				(A)	(B)	(C)	(D)	(E)	(F)		
1	1	1E3000-66370	MOTOR,OIL	1							
1-1	1	1E3001-66370	MOTOR,OIL	1							N
		(A=FXXXXXX)									
I	1-2	1E3001-66250	MOTOR MSF,OIL	1							S
		(A=F810239)									
2	1	1E3000-66950	BUSHING 1/2X1/4	2							Z
		(A=FXXXXXX)									
3	1	1E6030-67030	ELBOW 90	3							
I	3-1	1C6140-46750	ADAPTER 1/4	3							N
		(A=F810239)									
I	4	22217-080000	SPRING WASHER 8	3							Z
		(A=FXXXXXX)									
5	1	24321-000600	O-RING 1A G-60.0	1							
6	1	26016-080302	BOLT M 8X 30	3							
I	6-1	26013-080302	BOLT M 8X 30	3							N
		(A=FXXXXXX)									
7	1	1E3001-66750	CYLINDER,HYDRAULIC	1							
8	2	1E3001-66760	CYLINDER	1							
9	2	1E3001-66810	ROD,CYLINDER	1							
10	2	1E3001-66840	PISTON	1							
11	2	1E3001-66860	GLAND	1							
12	2	1E3001-66900	PACKING 53	2							
13	2	1E3001-66910	PACKING 28	1							
14	2	1E3001-66920	SCRAPER SDR28	1							
15	2	1E3001-66930	RING G65,BACKUP	1							
16	2	22137-160000	WASHER 16,POLISHED	1							
17	2	24311-000160	O-RING 1A P-16.0	1							
18	2	24321-000650	O-RING 1A G-65.0	1							
19	2	26341-160002	U-NUT 16	1							
20	1	1E3001-66890	PIN,GUDGEON	2							
21	1	1E3000-66980	SHIFT SUPPORT	2							
22	1	1E6030-67030	ELBOW 90	2							
23	1	24761-010000	NIPPLE M6F, GREASE	2							
24	1	26797-080002	LOCK NUT M 8	2							
25	1	26979-080302	SCREW 8X30,HEX.S.LOC	2							
I	26	1E3001-66260	MOUNT,OIL MOTOR	1							W
		(A=F810239)									
I	27	1N1940-42720	NIPPLE PF3/8 PT1/4	3							W
		(A=F810239)									
I	28	24311-000140	O-RING 1A P-14.0	3							W
		(A=F810239)									
I	29	24321-001000	O-RING 1A G-100.0	1							W
		(A=F810239)									
I	30	26013-120302	BOLT W/WASHER M12X30	2							W
		(A=F810239)									

Fig.20. IDLER

20. IDLER



N020326

(A)=YMD50 (D)=
(B)= (E)=
(C)= (F)=

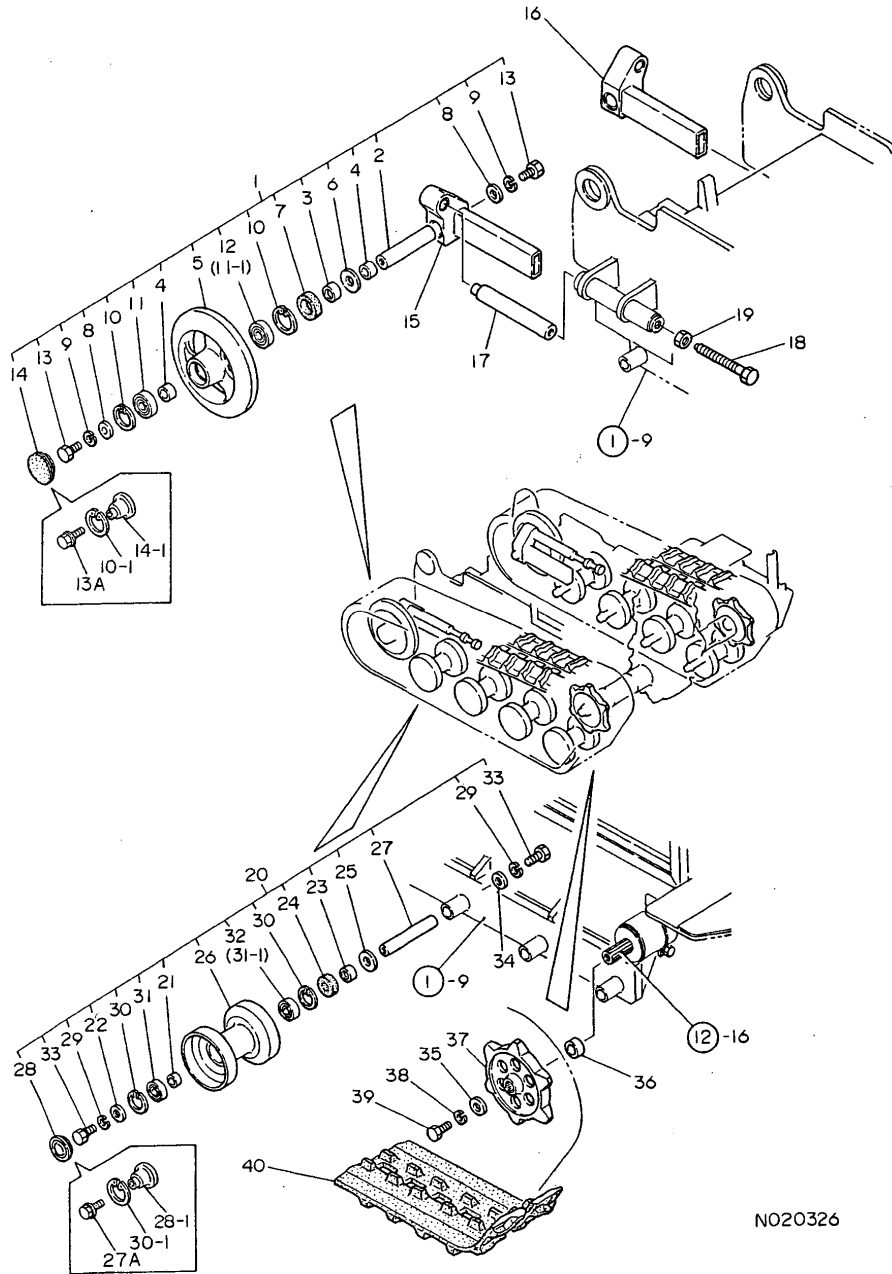
REF.	LEV.	PARTS NO.	DESCRIPTION	QTY						I	R
				(A)	(B)	(C)	(D)	(E)	(F)		
1	1	7E3001-99030	IDLER ASSY	2							
2	2	1E3001-73010	SHAFT, IDLER	2							
3	2	1E6460-73160	SLEEVE SI 25X30X13	2							
4	2	1E6460-73170	COLLAR	4							
5	2	1E6460-73180	IDLER (215), IDLER	2							
5-1	2	1E6650-73180	IDLER 215	2							S
(A=FXXXXXX)											
6	2	1E6460-73190	COLLAR 25X46X3.2	2							
7	2	1E6460-73210	COLLAR TC6304710	2							
7-2	2	1E6650-73880	SEAL KYC30478	2							N
(A=FXXXXXX)											
8	2	1E6150-73410	WASHER 12X33X4.5	4							
9	2	22217-120000	WASHER 12, SPRING	4							
10	2	22252-000470	CIRCLIP 47	4							
10-1	2	22252-000471	CIRCLIP 47	4							N
(A=FXXXXXX)											
11	2	24101-060054	BALL BEARING	2							
11-1	2	24101-060054	BALL BEARING	4							K
(A=FXXXXXX)											
12	2	24102-060054	BALL BEARING	2							Z
(A=FXXXXXX)											
13	2	26116-120302	BOLT M12X 30 PLATED	4							
13A	2	1E6570-73730	BOLT 6X8	2							W
(A=FXXXXXX)											
14	2	27260-470001	COVER 47, BLIND	2							
14-1	2	1E6650-73700	CAP, ROLLER	2							S
(A=FXXXXXX)											
15	1	1E3001-73030	METAL L, IDLER	1							
16	1	1E3001-73070	METAL R, IDLER	1							
17	1	1E6150-73480	SHAFT, TENSION	2							
18	1	1E6150-73490	BOLT, TENSION	2							
19	1	26717-160002	NUT M16	2							
20	1	7E3001-99040	TRACK ROLLER ASSY	8							
21	2	1E6050-58240	COLLAR 20.3X25.4X12	8							
22-1	2	1E6570-73200	WASHER 10.5X28X3.2	8							R
(A=FXXXXXX)											
22-2	2	1E6570-73201	WASHER 10.5X28X3.2	8							N
(A=FXXXXXX)											
23	2	1E6460-73060	SLEEVE 20X25X13	8							
23-1	2	1E6460-73061	SLEEVE SI 20X25X13	8							N
(A=FXXXXXX)											
24-1	2	1E6460-73071	SEAL TC25428, OIL	8							N
(A=FXXXXXX)											
24-2	2	1E6570-73880	SEAL KYC25428	8							N
(A=FXXXXXX)											
25	2	1E6460-73080	COLLAR 20X41X3.2	8							
26	2	1E6150-73100	TRACK ROLLER	8							
26-1	2	1E6650-73100	ROLLER, TRACK	8							S
(A=FXXXXXX)											
27	2	1E3001-73150	SHAFT, ROLLER	8							
I 27-1	2	1E6251-73352	SHAFT, ROLLER	8							R
(A=F810019)											
27A	2	1E6570-73730	BOLT 6X8	8							W
(A=FXXXXXX)											

++ CONTINUE ++

Fig.20. IDLER

(A)=YMD50 (D)=
 (B)= (E)=
 (C)= (F)=

20. IDLER

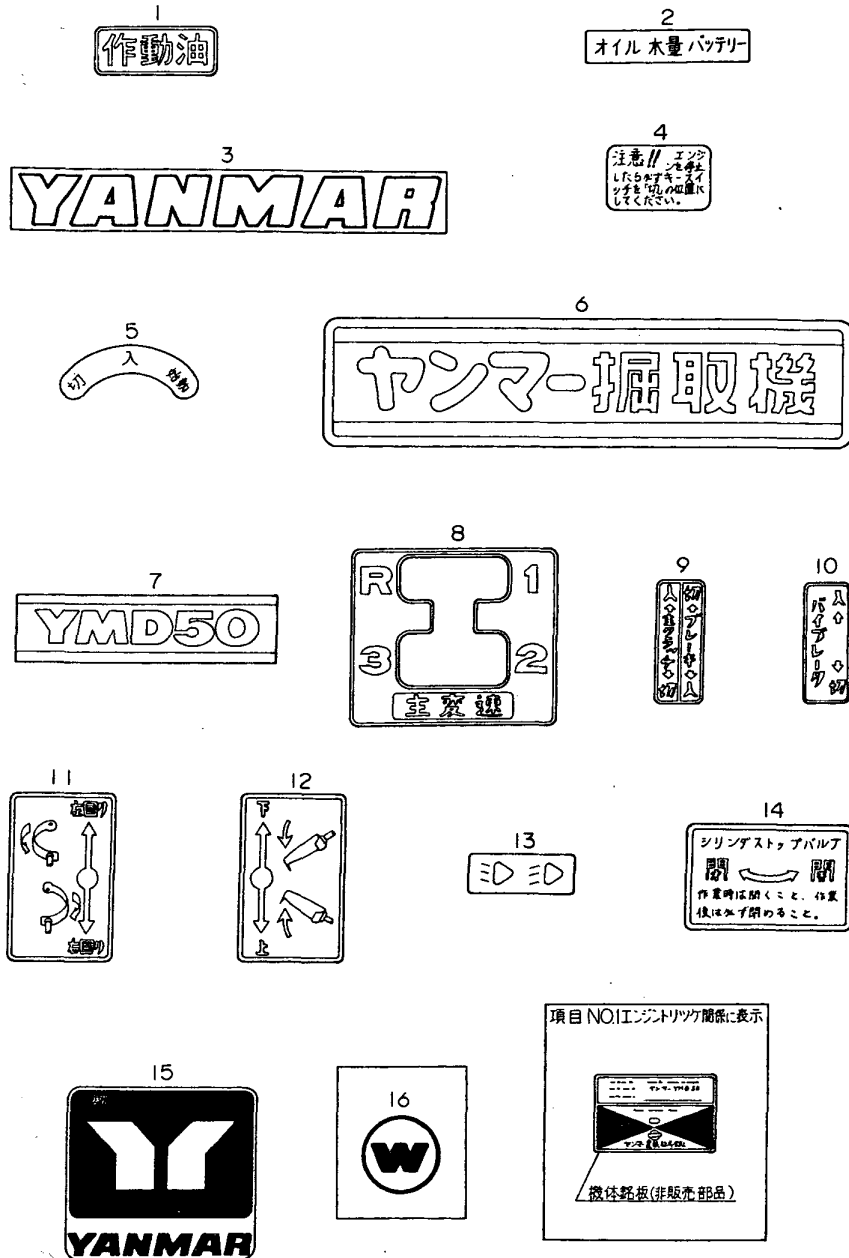


N020326

REF.	LEV.	PARTS NO.	DESCRIPTION	QTY						I	R	
				(A)	(B)	(C)	(D)	(E)	(F)			
28	2	7E6250-73500	COVER 42		8							
28-1	2	1E6570-73700 (A=FXXXXXX)	CAP,ROLLER		8							S
29	2	22217-100000 (A=FXXXXXX)	SPRING WASHER 10		16							Z
30	2	22252-000420	CIRCLIP 42		16							
30-1	1	22252-000421 (A=FXXXXXX)	CIRCLIP 42		16							N
31	2	24101-060044	BALL BEARING 6004		8							
31-1	1	24101-060044 (A=FXXXXXX)	BALL BEARING 6004		16							K
32	2	24102-060044 (A=FXXXXXX)	BALL BEARING		8							Z
33-1	2	26043-100302 (A=FXXXXXX)	BOLT M10X 30		16							R
34-1	1	1A1040-46460 (A=FXXXXXX)	WASHER 10X33X4.5		8							R
I 34-2	1	1A1380-46460 (A=FXXXXXX)	WASHER 10X33X6		8							N
35	1	1E6140-36160	WASHER 11X32X4.5		2							
I 35-1	1	1A1380-46460 (A=F810066)	WASHER 10X33X6		2							N
36	1	1E6150-54570	COLLAR 25.2X38X11.5		2							
37	1	1E6150-54581	SPROCKET		2							
38	1	22217-100000	SPRING WASHER 10		2							
39	1	26116-100302	BOLT M10X 30 PLATED		2							
40	1	1E3001-73250	CRAWLER 200X72X34		2							

Fig.21. LABELS

21. LABELS



(A)=YMD50 (D)=
(B)= (E)=
(C)= (F)=

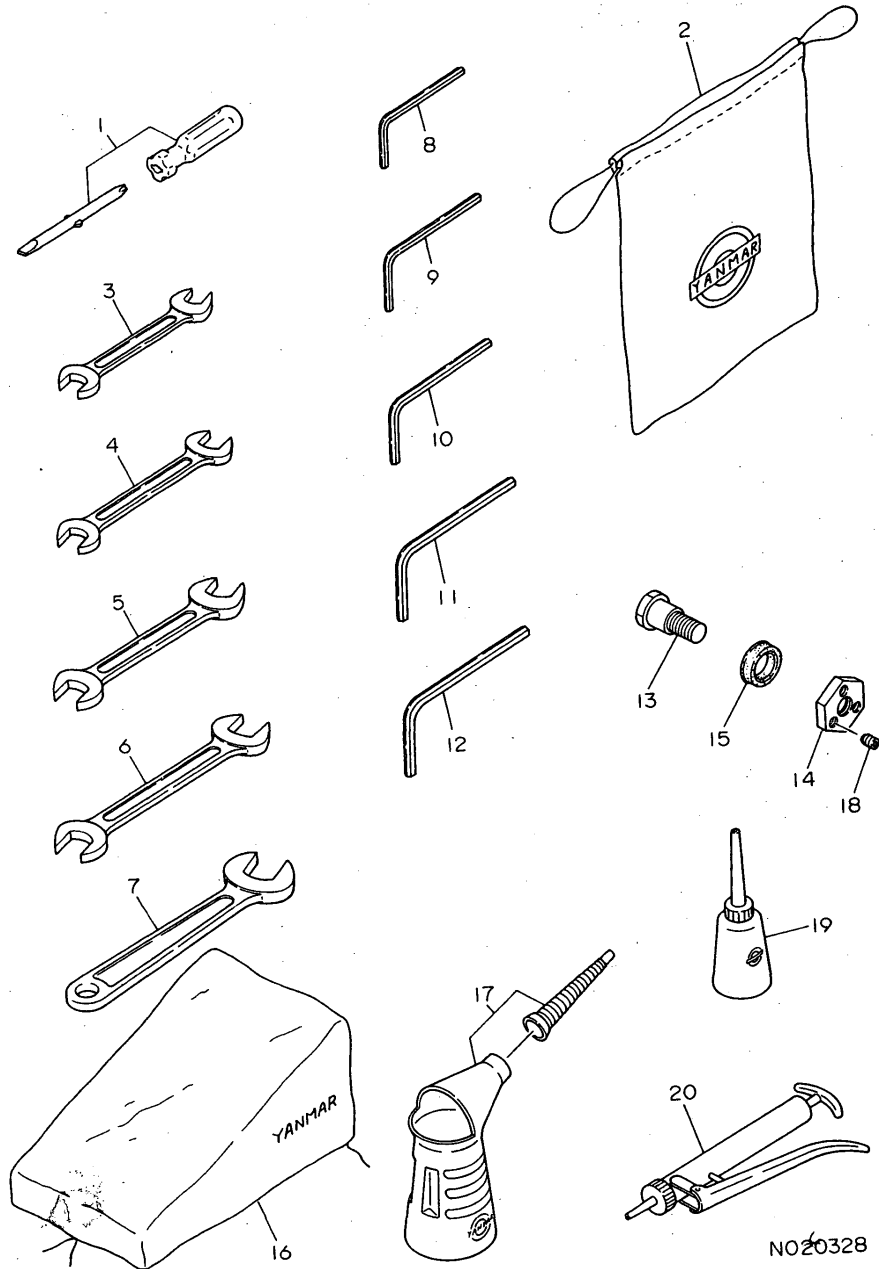
REF.	LEV.	PARTS NO.	DESCRIPTION	QTY						I	R
				(A)	(B)	(C)	(D)	(E)	(F)		
1	1	172336-03500	LABEL, HYD. OIL	1							
2	1	1N1250-55970	LABEL,LAMP INDICAT.	1							Z
(A=FXXXXXXX)											
3	1	1N1250-63490	LABEL "YANMAR",SMALL	1							
4	1	1E6320-78910	LABEL,KEY SW.CAUTION	1							
5	1	1E6141-86460	LABEL, KEY SWITCH	1							
5-1	1	1E6220-86330	LABEL, KEY SWITCH	1							R
(A=FXXXXXXX)											
6	1	1E3001-97050	LABEL,DIGGER	2							
7	1	1E3001-97060	LABEL,MODEL	1							
7-1	1	1E3001-97061	NAME PLATE	1							S
(A=FXXXXXXX)											
7-2	1	1E3001-97060	LABEL,MODEL	1							S
(A=FXXXXXXX)											
8	1	1E3001-97120	LABEL,MAIN CHANGE	1							
9	1	1E3001-97130	LABEL,MAIN CLUTCH	1							
10	1	1E3001-97140	LABEL,VIBRATOR	1							
11	1	1E3001-97160	LABEL 1,CONTROL	1							
12	1	1E3001-97170	LABEL 2,CONTROL	1							
13	1	1E3001-97180	MARK,LIGHT	1							
14	1	1E3001-97200	LABEL,STOP VALVE	1							
15	1	933110-96000	LABEL	1							
16	1	1E6071-86470	LABEL "W"	1							W
(A=FXXXXXXX)											

Fig.22. TOOLS & ACCESSORIES

NPC-2204 22. TOOLS & ACCESSORIES

(A)=YMD50 (D)=
 (B)= (E)=
 (C)= (F)=

22. TOOLS & ACCESSORIES



REF.	LEV.	PARTS NO.	DESCRIPTION	QTY						I	R
				(A)	(B)	(C)	(D)	(E)	(F)		
1	1	1A1290-82050	SCREWDRIVER,COMBINAT	1							
2	1	1A1180-83000	BAG, TOOL	1							
3	1	28110-100120	WRENCH 10X12	1							
4	1	28110-140170	WRENCH 14X17	1							
5	1	28110-190220	WRENCH 19X22	1							
6	1	28110-220240	WRENCH 22X24	1							
7	1	28110-360000	WRENCH	1							
I	7-1	28110-320360	WRENCH 32X36	1							R
(A=FXXXXXX)											
8	1	28150-040000	BAR WRENCH	1							
9	1	28150-050000	BAR WRENCH	1							
10	1	28150-060000	BAR WRENCH 6	1							
11	1	28150-080000	BAR WRENCH 8	1							
12	1	28150-100000	BAR WRENCH	1							
13-1	1	1E3001-21211	PIN 15,HINGE	1							N
(A=FXXXXXX)											
14	1	1E3001-21220	NUT 15XP1	1							
15	1	1E3000-21230	PACKING 22.4	3							
16	1	1E3001-98850	COVER,OPERATOR SEAT	1							
17	1	7E4133-99290	JUG ASSY, OIL	1							
18	1	26979-080082	SCREW M 8 X 8	3							
19	1	28210-000140	FEEDER, OIL	1							
20	1	933110-09500	GUN, GREASE	1							